

Fall 2008



ice skating

SPECIAL
SECTION:

2009
Events
Preview

Worlds '08 Rocks the Rockies

Report & Results

Photographs & Memories

Benefit On Ice Starring Mirai Nagasu

ZÜCA Sport

A true all around athlete.

Agile. Graceful. Absurdly versatile.
With a light, super strong aluminum frame, a
removable and washable bag, wheels that flash,
tons of custom combos-and yes, a built-in-seat,
this bag is made for the ice.

Ready?

Skate on.



Purchase your ZÜCA Sport and
accessories at your local retailer
or at www.zuca.com



ZÜCA, Inc. and the ZÜCA, Inc. logo are registered trademarks of ZÜCA, Inc.





Publisher

Ice Skating Institute

Editor

Lori Fairchild

Editorial Advisors

Peter Martell

Carrie Clarke

Randy Winship

Print Production & Advertising Sales Manager

Carol Jackson

Art Director

Cindy Winn Livingston

Contributors

Lisa Fedick

Dianne Powell

Recreational Ice Skating ISSN 0164-4106 (USPS 361-570) is published quarterly; Fall, Winter, Spring, and Summer; by the Ice Skating Institute, 6000 Custer Rd., Bldg. 9, Plano, TX 75023. Annual Subscription Rate is \$12.00 per year. Periodicals postage paid at Plano, TX, and at additional mailing offices. POSTMASTER: Send address changes to *Recreational Ice Skating*, 6000 Custer Rd., Bldg. 9, Plano, TX 75023. Printed in the U.S.A.

Address Subscription Requests to *Recreational Ice Skating*, 6000 Custer Rd., Bldg. 9, Plano, TX 75023. Extra copies are \$4.00 each (includes postage).

©2008 by the Ice Skating Institute. Reproduction in whole or in part is prohibited unless expressly authorized in writing by publisher. All rights reserved. Opinions expressed by contributors do not necessarily represent the views of the Ice Skating Institute, the publisher or the advertisers. Submissions of manuscripts, materials, photographs, and artwork are made at mailer's risk and must include self-addressed envelope with sufficient postage for return. No responsibility will be assumed for unsolicited materials. ISI reserves the right to edit material submitted for content and space consideration.

what's inside

RECREATIONAL ICE SKATING
FALL 2008/VOL. 33, NUMBER 1

features.....

Worlds 2008 Rocks the Rockies! 6

Event report and results

by Lori Fairchild

Mile-High Memories 10

Participants and parents
share their Worlds memories

ISI Worlds 2008

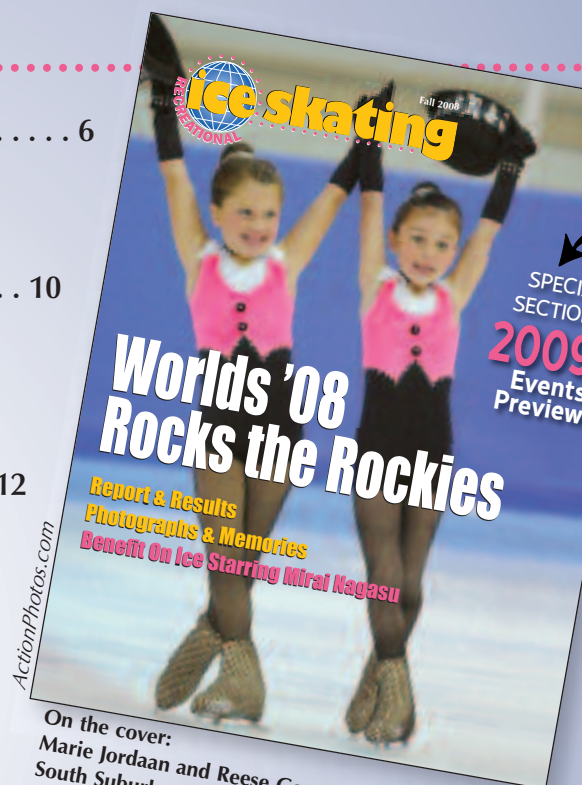
Photo Gallery 12

2009 ISI National Skating Events Pull-Out Preview 15

Expand your horizons
with six coast-to-coast
destinations!

2008 Scholars Shine, On and Off the Ice 26

by Dianne Powell



On the cover:
Marie Jordaan and Reese Gautsche, both 6, of
South Suburban Ice Arena exhibited their love of
skating and their friendship by teaming up for a
Light Entertainment Spotlight at ISI Worlds.

.....departments

The Write Stuff 4

ISIA Education Foundation Report 23

by Lisa Fedick

Competitors' Corner 28

weSKATE Kids Adventures & Activities 30

Calendar 32



ISIA Education Foundation Report, page 23



*Dedicated to providing leadership,
education and services to the
ice skating industry.*

ICE SKATING INSTITUTE

6000 Custer Rd., Bldg. 9
Plano, TX 75023
Phone: (972) 735-8800
Fax: (972) 735-8815
e-mail: isi@skateisi.org
www.skateisi.org

ISI INTERNATIONAL HEADQUARTERS

Executive Director
Peter Martell

Director of Skating Programs & Services
Carrie Clarke

Controller & Tradeshow Manager
Karen Schaffer

**National Skating Program &
Events Coordinator**

Randy Winship

Membership Coordinators

Kathy Chase

Angela Tooley

**Advertising Sales &
Print Production Manager**

Carol Jackson

**Senior Accountant &
Sponsorship Sales Manager**

Stuart Sedransky

Information Services Coordinator

Jeff Anderson

Administrative Assistant
Mary Ann Mangaro

ISI OFFICERS

President	Jim Hartnett
1st Vice President	Mike Paikin
2nd Vice President	Janice Forbes
Treasurer	Rob McBride
Secretary	Margy Bennett
Immediate Past President	Jim Lange
Past President	Boyd Wietector

DIRECTORS

District 1	Scott McCoy
District 2	Robyn Bentley
District 3	Lisa Fedick
District 4	Christine Wilson Brinton
District 5	Larry LaBorde
District 6	Toni Cooper
District 7	Jamie Baringer
District 8	Alane Swiderski
District 9	Brigid LaMear
District 10	Char Martin
District 11	Liz Mangelsdorf
District 12	Debbie Lane
District 13	Cindy Jensen
District 14	Paige Scott
District 15	Bert Blanchette
District 16	Cindy Solberg
District 18	Glyn Jones
Hockey	Sean Flynn
Builders & Suppliers	Doug Peters
Instructors	David Santee
Commercial Facilities	Kevin McCormack
Public/Not-for-Profit Facilities	Dean Mulso
Schools, Colleges, Universities	Glen Danischewski
iAIM Chair	Rob McBride
PSA Representative	Gerry Lane
USFSA Representative	Homer Hagedorn
ISIA Asia Representative	Raul Gomes
AMMA Representative	Trudy Ivory
MIAMA Representative	Jim Becker
MIRMA Representative	Judy Sniffen
Education Foundation	Don Bartelson
Lifetime Honorary Member	Carol Zdziebko

the write stuff

letters from our readers

I really want a pen pal who is on a theater on ice team. I've been part of the Bourne to Skate Theatre on Ice team for three years now, and I love it! Also, ever since I got my skates sharpened, I seem to not be able to do a camel spin. I keep going up on my toe pick, and I can't stop! Any advice?

**Elizabeth Fallon, 12, FS 5
Bourne Skating Club
Bourne, Mass.**

Maybe you got too used to doing the camel spin on dull blades. Be sure you are pulling back on the rocker as you arch even more and stretch the position. You may also want to have your coach check the blade to be sure you haven't accidentally nicked an edge.

I am working on Axels, camel-sit combination spin, Lutz jump and split jump. I am looking for a pen pal at about my age and level, who shares my love for the sport. I want to be able to give tips as well as receive them. In addition to figure skating, I also ski race, act and run. I live about 40 miles away from the closest ice rink!

**Natalie Sword, 13
Diamond Ice Chalet
Girdwood, Alaska**

I'm looking for a pen pal who is around my age and my level. I have been skating for about a year and a half. I am working on my Axel (and having trouble kicking forward), double Salchow, double loop jump, and I need help keeping my balance on my footwork and especially on my twizzles. I would like a pen pal who can give me tips and talk to me about what we are learning. I would like a pen pal who loves skating as much as I do.

**Lauren Diuco, 11, FS 4/5
Aliso Viejo Ice Palace
Mission Viejo, Calif.**

I have been skating for about two years. I would like a pen pal because it would give me somebody to talk to who could understand and maybe help me with the problems I have with the spins and jumps. I am also having trouble getting enough rotations on my sit spin and getting the full rotation on my flip. When I enter into the spin, I can get about two

rotations, then I begin to lose my balance and can no longer hold the spin. When I perform the flip, I often have to place my left foot down, then my right, to get part of the revolution. I am also slightly afraid to jump the flip because of an accident that I had while doing the jump. What I really need help on is keeping my balance in the entrance to the spin and landing the flip.

**Jewel Jordan, 14, FS 4
Tucker Road Ice Rink
Fort Washington, Md.**

It does sound like fear — not ability — is keeping you from a flip jump. How's your loop jump? It may help to start thinking of the flip as just a quick tap into a loop jump. Once you take off, the air positions and landings are identical. On the sit spin, be sure to step into the center of your circle and bring your free arm and leg around strong, but together. Don't worry about getting all the way down yet. It's better to have speed and control first.

I am working on my one-foot spin. It is tricky. I have trouble holding myself up on one foot. It almost makes me fall. I have trouble ending my program with my music. I would like to also get my shoot-the-duck down lower, but that makes me fall. My favorite skating move is my back spiral. I have two cousins, Kailey and Hannah, who live on the same street as me and we go skating together. I go over to their house to stretch before skating. We all have fun on our synchro teams. I would like to have a pen pal between 8 and 10 who is working on Freestyle 1 to 3.

**Jacqueline Hayden, 7, FS 1
Winterland Skating School
Rockland, Mass.**

I'm in Freestyle 2 and I can't pass because of the half Lutz. Do you have any tips?

**Maggie Carey, 9, FS 2
Oakton Ice Arena
Park Ridge, Ill.**

Are you changing to the inside edge at the last second when taking off? That's a common mistake. Be sure you are tapping behind and not to the side, and don't let your shoulders rotate before jumping.

I am working on my Axel, and have landed it many times on the harness and on the ice. I love skating and have skated for two years now. I have 89 medals, 79 of them first-place ones. I skate five days a week and take group lessons and private lessons. I would like a pen pal of any level who loves to skate as much as I do.

Nykki Olejniczak, 7, FS 5
Lloyd Center Ice Rink
Portland, Ore.

I have been skating since I was 6. This year I made the IcePlex Ice Stars synchronized teen team. I am on a break from private lessons, and I am working on my camel-sit, but I only have enough speed for my first rotation. Do you have any tips? I would like another pen pal, around my age and maybe in Freestyle 6 or 7.

Sammi Kammer, 12, FS 5
Pleasant Prairie IcePlex
Pleasant Prairie, Wis.

Try to get a strong camel spin by itself before combining it with a sit spin. The

camel spin entrance is all about timing — step in on a bent knee, then pull around the lead arm at the same time you straighten the knee. Don't rush either part, and keep your muscles tight.

I've been in Freestyle 5 for a while now and the only thing I haven't passed is my Axel. I can't seem to get the landing right when I'm not on the harness. I tend to slip backward and land on my butt or back, and I don't know what to do to perfect it. I would also like to have a pen pal who's around my age and in Freestyle 4 or 5.

Tori Irvine, 12, FS 5
Fairfax Ice Arena
Springfield, Va.

If you are falling backward, it sounds like your free leg isn't getting checked out soon enough. Try working on an Axel-toe loop combination jump. By anticipating the toe loop, your free leg will have to reach back to tap, which is

where you want it for the landing of the Axel anyway!

I have been skating for five years now. I am cleaning up my double Salchow and starting my double toe. My camel spin keeps tipping off my toe pick, and it's hard to get the camel consistent. Any tips?

Terry Teresa Nguyen, 10, FS 5/6
Anaheim ICE
Garden Grove, Calif.

Because of the forward position, hitting the toe pick on a camel spin is a common problem. Work on arching the back more and pulling back on your blade to keep as much weight as possible off the front. It's a stretch that is good to practice at the boards with one leg up on the wall. Terry, you also requested a pen pal, however, our pen pal program is through e-mail only, and you did not send us your e-mail address. If you will send it to editor@skateisi.org, we will forward your information to the pen pal you requested. ●

More Pen Pal Requests

The following ISI members seek pen pals close to their age and level. If you would like to respond, please send an e-mail with the required information (see box, right) to editor@skateisi.org.

Elizabeth Corn, 9, Delta
Tampa Bay Skating Academy
Tampa, Fla.

Samantha Angelillo, 10
Skylands Ice World
Rockaway, N.J.

Dmitry Bradfield, 9, FS 2
SkateQuest Reston
Herndon, Va.

Zachary Lacanlale, 8, Beta
Vacaville Ice Sports
Fairfield, Calif.

Stacie Ledbetter, 14, FS 4
Point Mallard Ice Complex
Decatur, Ala.

*** IMPORTANT ***

Please read before sending your letter!

Pen Pals

- Pen pal requests must be sent by e-mail to editor@skateisi.org.
- **YOU MUST INCLUDE THE MEMBER INFORMATION LISTED BELOW.**
- The pen pal program is exclusively for current registered ISI members.
- E-mail addresses will NOT be published in *Recreational Ice Skating*.

NOTE: We do not "match up" pen pals; we only publish your requests and electronically forward letters to specifically requested members. Once you have made the connection with your pen pal, the two of you will communicate directly rather than through ISI.

Letters to the Editor

- You must include:
 - Your first and last name
 - Your ISI member number (the six-digit number on your magazine mailing label)
 - Your age
 - Your skating level
 - The name of your arena
 - Your city and state
- Photos are welcome, but cannot be returned.
- If you have a skating question, be as specific as possible. Technical

questions will be answered by qualified ISI staff but should not be considered a substitute for coaching.

- All letters are printed at the discretion of the editor and may be edited for clarity, accuracy and space.
- E-mail is preferred. Send your letter to editor@skateisi.org or:
Ice Skating Institute
Attention: Editor, RIS
6000 Custer Rd., Bldg. 9
Plano, TX 75023

Worlds 2008 Rocks the Rockies!

by Lori Fairchild

The record heat wave that hit Denver in late July might have been a clue that something unusual was in the air. Just as the typically mild climate soared into the triple digits, ISI Worlds made its Colorado debut, rockin' the Rockies with a recreational ice skating competition unlike anything the region had ever experienced.

"Our people were blown away," said Gerry Lane, event chairman and skating director for host facilities South Suburban Family Sports Center and South Suburban Ice Arena in Centennial. "Many were first-time ISI competitors, and the atmosphere at this event was wonderful. We have had State Games and other big events in this area, but this was competing on a whole new level for our skaters. They are already talking about going to future big ISI events, like Worlds in San Jose next year."

Lane said the response was so positive that his facilities are already considering hosting future events. "Despite the incredible amount of work that goes into hosting such a big event, our staff hasn't given me too many strange looks when I talk about the next one," he added.

"The week went very smoothly," noted Randy Winship, ISI's national skating program and events coordinator. "We received many comments about the great hospitality and wonderful rink facilities, thanks to Gerry, along with facility managers Tim Johnson and Frank Xavier, and their staff and volunteers. Their early planning, preparation and organization made it all possible."

An ice skating event coordinator's worst nightmare became a reality on the first day of competition when one of the competition rinks lost its ice. But professional competence, quick action and level heads prevailed, the near-disaster was averted and the first event started only *one minute* late. "That actually made anything that came up during the rest of the week much easier to deal with!" Lane said.

Indeed, the rest of the week was as refreshing as a mountain breeze (minus a record heat wave). Nearly 90 facilities from 23 states and three foreign countries brought more than 900 competitors who skated a collective total



The opening ceremonies included the customary festive competitors' parade followed by an evening of burgers, bungee bouncing, boogying and other outdoor fun.

of 2,619 performances. Ages ranged from an adorable 3 to a stunningly graceful 83. Texas brought the most out-of-state competitors, while Singapore and Alaska teams traveled the greatest distance.

Continued on page 8

RECREATIONAL ICE SKATING, FALL 2008



For the first time ever, the Worlds team trophy will spend a year in Colorado, at South Suburban Ice Arena.

Figure Skating Store
Tel. 818-785-2002

Located in LA

14318 Calvert St. Van Nuys CA 91401



Zuca Bags starting 119.99 with Free Shipping



*Figure Skating Dresses
Over 400 styles available
in stock. Custom and crystal
designs available.*

*Best Prices on Riedell, Graf and Jackson Skates
Blades in Stock: MK, John Willson, Ultima, Paramount*

*Clubs and Precision Team Discounts: Custom Logos,
lots of different styles available.*



www.figureskatingstore.com

ICE SKATING RINK IN VAN NUYS

BIRTHDAY PARTIES • PUBLIC SESSION

**A BUMPER CARS PARTY
TO YOUR DOORSTEP**



www.valleyskating.com

VALLEYICE@EARTHLINK.NET

14318 Calvert St.
Van Nuys CA 91401



BUMPER CARS ON ICE

818.785.2171

The full scope of skating levels and abilities was represented, with Freestyle 4 events boasting the most entries. Congratulations to Delanie Honda of Parade Ice Garden in Minneapolis, who joined the ranks of those who have passed the challenging Freestyle 10 test. (*Watch for a profile of Delanie in an upcoming issue of RIS.*)



Lori Fairchild

Singapore was represented by a full team for the first time at an ISI Worlds event. Coach Jonnansical ("Jonn") Boo (far left) brought 15 skaters to the event. "It was a great stepping stone for them," she said, "working as a team and learning what it feels like to skate somewhere else."



Lori Fairchild

Family and friends of Worlds teams make outstanding fan clubs! The enthusiastic cheering section supporting the Dublin Dazzlers and Dolls was no exception.

Between competition events, visitors took full advantage of the fun attractions at Family Sports Center. It was the first time most had encountered a climbing wall, bumper cars, laser tag and other amusement park attractions under the same roof as an ice rink.

Many families took the opportunity to explore the scenic surroundings, with day trips to Rocky Mountain National Park, Pikes Peak, Garden of the Gods and Elitch Gardens theme park in Denver. Shopping excursions to the area's wonderful malls were another popular activity.

Worlds week culminated with the ISIA Education Foundation's sold-out Benefit on Ice show (*see page 23*) starring the delightful Mirai Nagasu.

Top 25

For a complete listing of teams and results, check the ISI Web site: skateisi.org

PLACE	ARENA	POINTS
1	South Suburban Ice Arena	1403.5
2	South Suburban Family Sports Center	630
3	Capital of Texas Figure Skating Club	554.5
4	PSA StarCenter	416
5	Franklin Park Ice Arena	409.6
6	Roosevelt Ice Arena	402.5
7	Sioux Falls Figure Skating Club	385
8	Capitol Ice Academy	378
9	ICE At The Parks	375
10	Lacis Sur Glace-Singapore	346.5
11	Superstars Figure Skating Club	308.5
12	SM Southmall-Manila	298
13	Galleria Ice Skating Center	292.5
14	Dublin Iceland	272
15	SM Megamall-Manila	223.5
16	Tampa Bay Skating Academy-Countryside	187.5
17	Northbrook Sports Center	179.5
18	Sharks Ice at San Jose	173.5
19	K Lynn Skating School	172
20	Fredericksburg Ice Park	171.5
21	University of Denver	167.3
22	Pasadena Ice Skating Center	155
23	Big Bear Ice Arena	147
24	Dr Pepper StarCenter-Duncanville	145
25	Sierra Providence Events Center	129

Team Trophies

Michael Booker Trophy: South Suburban Ice Arena

Team that accumulates the most overall team points during the week

Team Champion Trophies: South Suburban Family Sports Center, Capital of Texas Figure Skating Club, PSA StarCenter, Franklin Park Ice Arena

2nd-5th place teams that accumulate the most overall team points during the week

President's Trophy: Sioux Falls Skating Club

Team with 14-34 skaters that accumulates the most team points and does not place in the top five teams overall

Board of Directors' Trophy: Tampa Bay Skating Academy-Countryside

Team with 1-13 skaters that accumulates the most team points and does not place in the top five teams overall

Percentage Trophy: Fredericksburg Ice Park

Team with five skaters or more that does not place in the top five overall and gets the highest point percentage per skater (does include team event points)

Special Thanks to Presenting Sponsor Denver Broncos

Next year's Worlds event is set for July 27-Aug. 1 in sunny San Jose, Calif., at Sharks Ice, the largest ice

skating facility west of the Mississippi River, with four ice surfaces under one roof. See you there! ●

Turn the page for more Worlds memories and photos, and don't miss the Education Foundation fundraiser report, featuring Benefit Show highlights, starting on page 23.



Aim High

Reach your dreams with Riedell.
From your first spins to perfect landings,
Riedell helps you soar.

riedellskates.com



Introducing the New Ultra-Lightweight 2010 LS

Mile-High



ISI Worlds was an experience we will never forget. We loved meeting and skating with people from all across America and from around the world! It was fun trading pins with other skaters from far away, and we will always remember them when we look at those pins on our Zucas! My girls loved "collecting" the license plates we saw in the parking lots of South Suburban Ice Arena and Family Sports Center, and

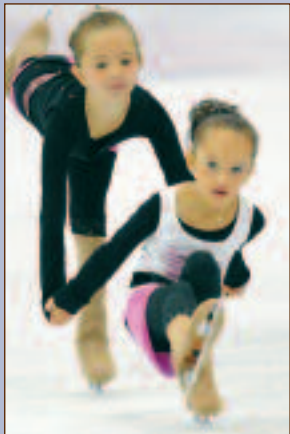


My daughter, Loray, 5, was so excited to be able to skate on the ice all by herself and we were absolutely thrilled with all of her performances. She told me that it didn't matter if she placed or not because she was having so much fun. Thanks to the ISI organization for making her first competition a fantastic experience!

Karen Harris • Aurora, Colo.

we had seen 28 states when the week ended! We also loved all the unusual events, and we had fun participating in the Surprise events. The opening ceremony and the party on Wednesday night were great, too. Thanks for a wonderful event!

Rebecca Moore (Janie's and Mary's Mom) • Centennial, Colo.



I had so much fun making friends and competing against so many wonderful skaters from around the world. My favorite memories are slumber parties with my teammates and coach, a fun dinner at Casa Bonita watching cliff divers, riding rides at the ice rink, the competitors' party, watching amazing skaters in many different kinds of events and trading pins. On my way home, I told my mom and dad, "I LOVE being an ice skater!"

Peyton Wiewel • Parkville, Mo.

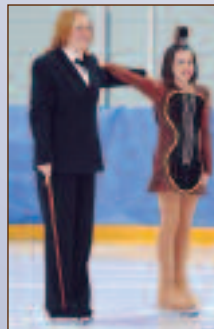
I had an awesome time in Denver. My brother, Anthony, and I had a blast at the party in the park. We loved the rides. I met skaters from all over the United States and some foreign countries. I was glad to see some special

skaters from the FSA in Elk Grove Village — they did awesome! I am planning on going to San Jose in 2009 to meet new friends and to have fun competing.

Andrea Caruso • North Riverside, Ill.

This is our second Worlds competition, and our first time doing a Family Spotlight. We competed on Aug. 1, which was Emma's 9th birthday. We received a fourth-place medal and had so much fun! Emma thought it was a great way to celebrate her special day. We are looking forward to next year's competition in San Jose.

Kathy Plakovic (Emma's Mom) • Austin, Texas



The event was extremely organized, well planned and had very knowledgeable and helpful staff. As a parent, the best part of competing in an ISI events is what ISI stands for with its three golden rules of competition: sportsmanship, teamwork and fairness. This is the environment all parents can hope their child is a part of.

Amy Hopkins (Skylar's Mom) • Dunedin, Fla.



We were so excited to perform our new Free Dance 3 that includes all of the new required maneuvers. At 73 years old, each competition becomes a special event, a challenge conquered and a reason to rejoice. We also always enjoy catching up with old friends met at previous venues, and meeting so many more new people. Thanks for a wonderful life experience.

Bev and Jack Rienks • Englewood, Fla.



My daughter and I competed at Worlds and we had a wonderful time. The people at the South Suburban Ice Arena and Family Sports Center were great, and we made a lot of friends. The most memorable for us were the Special Skaters — watching them skate brought tears of joy to my eyes that they can do what they love, which is skating. I am so glad that there is ISI, not just for us but for every individual, despite their disabilities. God bless ISI.

Diana Thakur • Oviedo, Fla.



It was amazing to watch the advanced skaters, as we are from a fairly new rink and don't have many older skaters to look up to. One of the best parts of our week was when our team, new to Worlds, made it to fourth place and was only one-tenth of a point away from third! We finished at sixth, and are immensely proud of ourselves. Thanks, Denver, for putting on such a great week!

Cecilia Lang • Rapid City, S.D.

Memories



We had a fabulous time. We only had eight skaters, and one of the most memorable events was the parade of participants when they called out "Fairfax Ice Arena."

We were so proud

to be there, even though we did not have a banner for our group. Several other groups saw us and invited us to join them in the march. Everyone was so friendly. Thank you for a great time at Worlds that we will never forget!

Susan Roesch • McLean, Va.

We had a blast meeting a lot of people from all over the world and connecting with old friends.

Back at the Artistic Challenge in Connecticut, Caitlin met Cassandra Cole from Nashoba Valley. They

immediately bonded due to the fact that both were the only ones there from their rinks and neither had a coach with them. At

Worlds they met up again to cheer each other on.

Casey came again as the only one representing Nashoba Valley, and

TBSA Coach Bill Coyles

immediately took her under his wing and the skaters made her an honorary member of TBSA Countryside. That type of sportsmanship is what ISI is all about.

Brian, Laura and Caitlin Rice • Clearwater, Fla.

Our family had a great time. Among other events, our children participated in the Family Spotlight. I had looked forward to meeting other large skating families to

see what else we might have in common besides skating. I wasn't disappointed. The other families in our category were a delight to meet, and the entire atmosphere on Friday at the Family Spotlight events was heartwarming. It emphasized what skating is all about for our family: fun, friendship and togetherness.

Cindy Arsenault • Highlands Ranch, Colo.



The thing I enjoyed most in addition to performing my two programs was the team aspect of the competition. My fellow teammates and I rallied around each other, and we were so excited to earn points for our rink, Big Bear! It's great to be a part of ISI Worlds.

Jamie Bergos • Aurora, Colo

For me, the best part was having a caring ISI coach, Crystal, step in to put me on the ice when my own coach had a conflict with another skater and judging obligations. Crystal helped warm me up, was there when I finished my technical program and stayed with my mom and me until the placements were announced. I will never forget her kindness, which helped make my first Worlds a wonderful experience. Thank you, ISI!

Shelbi Todd • El Paso, Texas



What a great event and location Denver was! We loved the pin trading and look forward to making some pen pals. It was neat to see all the doors at the hotel plastered with signs — everyone was so welcoming and excited! Denver and the surrounding communities were packed with great views and fun things to do. We look forward to training hard and skating at Worlds in the future!

Sara Preston Davidson and (Mom) Kathy Davidson • Countryside, Fla.

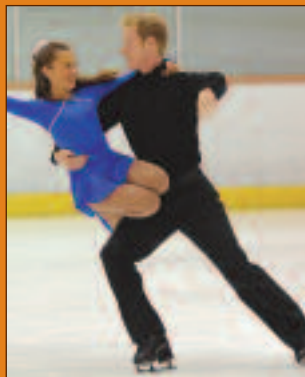
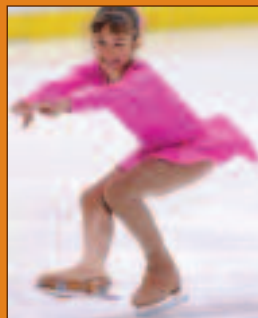
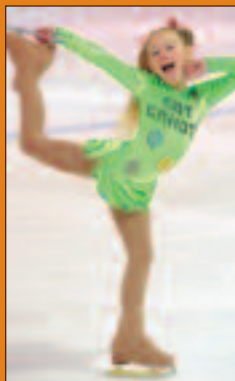
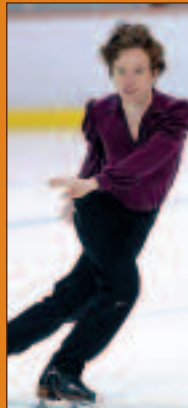
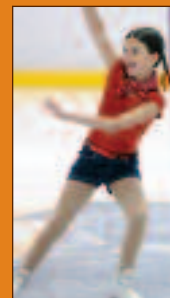
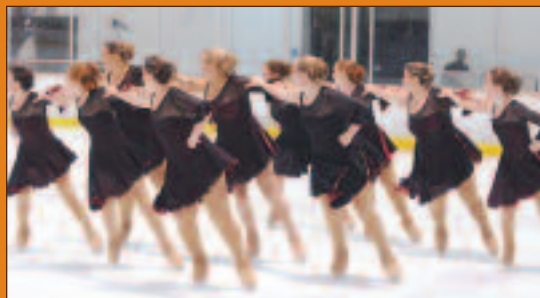
ISI Recreational World Team Championships was a wonderful experience. My coach helps keep ice skating fun for her students. I met lots of new friends and shared Webkinz stories, e-mail addresses and a few phone numbers. I also met some teenage girls from Austin, Texas who braided my hair for my competition. But what I loved the most was skating my favorite program of all times, *Romeo and Juliet*. We only had eight skaters, [but] I think the audience knew that Arkansas was there — we should have won the loudest-group contest, for sure!

Kayla Alspach • Van Vuren, Ark.

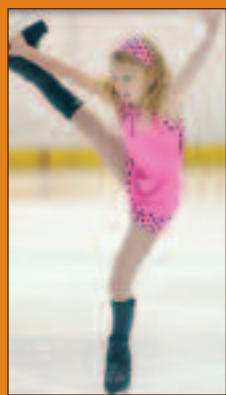
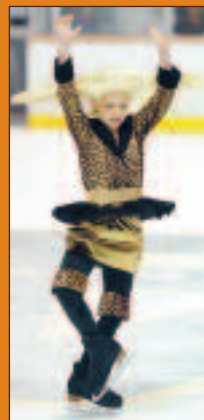
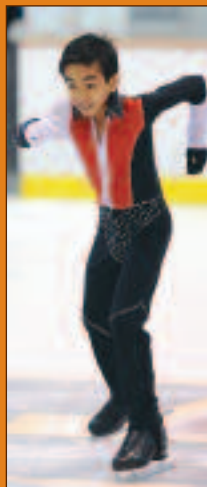
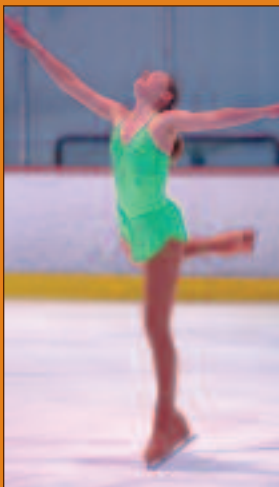
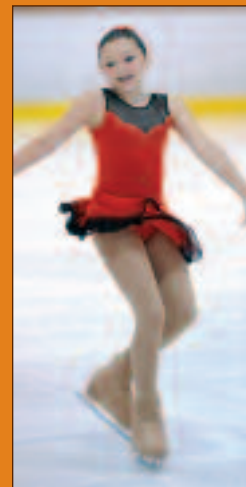


Thank you from the bottom of my heart for making my daughter's summer one we will never forget — building confidence, exceptional skating, a few disappointments, great sportsmanship and getting to meet and watch Mirai Nagasu skate. All I can say is thank you for giving my daughter a week of memories to carry her through a lifetime.

Jeanette Ordish • El Paso, Texas



ds 2008



ISI members skate for the FUN of it!

Join or renew today, and be a part of the world's largest group of recreational ice skaters.

Here's what you get with your membership:

- The original learn-to-skate program – tried and true!
- Test registration and badges
- Excess accident and liability insurance
- Recreational Ice Skating magazine
- The opportunity to participate in local and national ISI competitions and shows, including the annual ISI World Recreational Team Championships – the largest recreational ice skating event in the world!
- A convenient new universal membership renewal term (all memberships renew on Sept. 1 of each year and run through Aug. 31 of the following year)

To join or renew, go to www.skateisi.org
or call (972) 735-8800



Ice Skating Institute



2009 ISI National Skating Events



ISI 50th ANNIVERSARY SKATING CHAMPIONSHIPS

May 23-24
RDV Sportsplex • Orlando, Fla.
Entry Deadline: March 1



July 27-Aug. 1
Sharks Ice at San Jose • San Jose, Calif.
Entry Deadline: May 1



April 17-19
Arctic Ice Arena • Chicago, Ill.
Entry Deadline: Feb. 1



Oct. 2-4
Olympic Center • Lake Placid, N.Y.
Entry Deadline: Aug. 15



Feb. 13-15
Dr Pepper StarCenter • Plano, Texas
Entry Deadline: Dec. 1, 2008

Expand Your Horizons with Six Coast-to-Coast Destinations



Dec. 4-6
Fort Myers Skatun • Fort Myers, Fla.
Entry Deadline: Oct. 15



Ice Skating Institute

Go to www.skateisi.org for entry forms and additional event details.

2009 ISI National Skating Events



ISI Winter Classic

★ Feb. 13-15

Entry deadline: Dec. 1, 2008

★ **Blaze a trail to the Lone Star State for ISI's first national event of 2009!**

Just when you are ready for a post-holiday break, it's time for the hottest winter event in recreational ice skating. Scheduled just before President's Day to give you a long weekend, this year's Winter Classic takes you to Dallas – also known as "Big D," where the motto is "Live Large. Think Big." Big, in-

deed! The Dallas area is the shopping capital of the U.S. and offers more than 6,000 restaurants, not to mention arts and historic districts, parks and museums. Come on down for a hearty helping of Texas hospitality!

FOR MORE INFORMATION

skateisi.org

visitdallas.com

plano.gov/departments/cvb

drpepperstarcenter.com



2009 ISI National Skating Events



ISI Synchronized Championships

April 17-19

Entry deadline: Feb. 1

All together now — get swept off your feet in the Windy City!

You're sure to be blown away by the excitement and cultural richness of Chicago. The Windy City is the birthplace of the skyscraper, a food-lover's paradise and home to architectural marvels, world-renowned museums, Michigan Avenue's "Magnificent Mile", Navy Pier, a 50-acre lakefront playground of parks, shops and restaurants, Lincoln Park Zoo, one of the best free zoos

in the country, historic Wrigley Field, and the elevated public train line famously known as the "L." Chicagoland is the Midwestern Mecca, with lots to see, do — and eat!



FOR MORE INFORMATION

skaters.org

chicagois.org

artisticseries.com

2009 ISI National Skating Events

ISI 50th Anniversary Skating Championships

ISI 50th ANNIVERSARY

May 23-24

Entry deadline: March 1

Skate in this special competition celebrating our 50th anniversary and be a part of ISI history!

Orlando is the perfect place for ISI's 50th Anniversary celebration — the area hosts nearly 50 million visitors every year! And no wonder; it's the place for pure fun and fantasy, packed with the nation's greatest theme parks. Meet a fairytale princess or a superhero. Splash and slide at a giant water park. Swim with a beluga whale. Be an astronaut for a day. And skate with us at the world-class RDV Sportsplex, home of the NBA's Orlando Magic. We'll be making our own magic — on ice! ISI skaters of all ages and abilities are welcome, and everyone will receive a commemorative 50th Anniversary medal.

FOR MORE INFORMATION

skateisi.org

orlandoinfo.com

orlando.com

visitflorida.com

rdvsportsplex.com/rdvsportsplex



2009 ISI National Skating Events

ISI World Recreational Team Championships

July 27 - Aug. 1

Entry deadline: May 1

ISI skaters know the way
to San Jose!

San Jose may be the capital of Silicon Valley, but it's so much more than microchips. It boasts a cityscape made for strolling, featuring colorful corridors, a vibrant farmers' market and sidewalk dining. Go festival hopping, check out America's largest open-air flea market or spend a day at the Great America theme park. But the best reason to visit San Jose in 2009 is ISI Worlds, hosted by Sharks Ice at San Jose, the largest ice skating facility west of the Mississippi and the official training facility of the NHL's San Jose Sharks.

FOR MORE INFORMATION

skateusa.org

sanjose.org

sharksiceatsanjose.com



2009 ISI National Skating Events

ISI Adult Championships

Oct. 2-4

Entry deadline: Aug. 15

Join us at the Olympic Center in Lake Placid and make your own "Miracle on Ice"!

ISI adult skaters are a special breed. They find joy in recreational ice skating, each other's company, this fun annual event and life itself – and it shows! Make your own tracks in the same place where "The Miracle on Ice" happened in 1980, with the U.S. hockey team's surprise victory over the Soviet Union, and where, in 1932, Sonja Henie won her second of three consecutive gold medals. Visit the on-site 1932 and 1980 Lake Placid Winter Olympic Museum, Take in the Adirondack, mountain views, some Main Street shopping, a spa visit. And, as you always do, have the time of your life!

FOR MORE INFORMATION

skateisi.org
lakeplacid.com
orda.org



2009 ISI National Skating Events

ISI Artistic Challenge

Dec. 4-6

Entry deadline: Oct. 15

Showcase your creativity and celebrate the art of ice skating!

The freedom of personal expression without technical scores has made Artistic Challenge a popular event for skaters who love the opportunity to focus on showmanship, costumes and creativity. It's a low-pressure environment with a high fun factor! The fifth annual Challenge will be staged in Fort Myers, Fla., the "City of Palms." Here you'll find white sand beaches, exotic tropical wildlife and marine life, and the Fort Myers Skatium, a family entertainment facility featuring laser tag, a video arcade and an inline rink, in addition to its NHL-size ice surface.



FOR MORE INFORMATION

skateisi.org

fortmyers.org

fortmyers-sanibel.com

visitflorida.com

fmskatium.com

ISI National Event Checklist



At least three months before event:

- ☐ Go to ISI Web site (skateisi.org) and print out event entry forms.
- ☐ Pass test for skating level you wish to participate in at event.
- ☐ Talk with your coach and decide how many events you should enter, and how to enter some extra events that don't require a program routine.

By entry deadline:

- ☐ Make sure your ISI membership is current through the end of the competition. If not, your membership renewal fee can be included on your event entry form.
- ☐ Make sure your test is registered.
- ☐ Send in completed entry forms and fees.
- ☐ Make travel plans, including hotel reservations at an ISI host hotel, listed on the ISI Web site.

Two months before event:

- ☐ Make or purchase costumes.
- ☐ Make props for Spotlight events.
- ☐ Learn new routines.

Two weeks before event:

- ☐ Make an extra back-up copy of all music.
- ☐ Practice several times in full costume with all props.
- ☐ Polish skates.

During event:

- ☐ Smile!
- ☐ Skate your best.
- ☐ Practice ISI sportsmanship.
- ☐ Meet new friends, trade contact information, pins, etc.
- ☐ Have FUN!

Foundation Takes 2008 Fundraisers to the Mile-High City

by Lisa Fedick

Worlds 2008 in Denver was a big week for the ISIA Education Foundation. The festivities started on Wednesday evening with the opening ceremonies and competitors' party, where the ISI celebrity dunk tank was a huge hit — and a successful fundraiser.

Event Chairman Gerry Lane and ISI President Jim Hartnett braved the "treacherous" waters not once, not twice, but a combined total of seven times, raising \$100 per dunk for the Foundation's scholarship fund.



Lori Fairchild

Event Chairman Gerry Lane and ISI President Jim Hartnett drip-dry next to the dunk tank, where they helped raise \$700 for the Foundation.



Lori Fairchild

A mini-golf tournament was another Foundation fundraiser during Worlds week. Pictured here are some of the younger participants.

Thursday evening the Foundation hosted a mini-golf tournament at the South Suburban Family Sports Center. Hometown girl and Worlds adult skater Liz Avery



ActionPhotos.com



ActionPhotos.com

Carly Andrews and Angelina Giuliano were the lucky winners of the "Skate with a Star" raffle.

won the grand prize of a pair of Klingbeil custom skating boots, generously donated by Donald Klingbeil. (The best score was actually earned by another adult competitor, Barbara Mozug, who graciously passed on the skates, as she had just gotten a new pair. Barbara, you are a true champion!) Rob Laurence Hawk of Melvindale, Mich. took home the MacGregor putter.

The highlight of the week for skaters and spectators alike was the Benefit on Ice show on Friday evening at South Suburban Ice Arena. The talented cast of 2008 ISI Worlds champions was joined by the two lucky "Skate with a Star" raffle winners, Carly Andrews from Northbrook Sports Arena and Angelina Giuliano from Franklin Park Ice Arena.

Both of the 2008 ISIA Education Foundation scholarship recipients were in attendance and honored by Foundation President Donald Bartelson and ISI Past President Boyd Wietecter. Emily Miller skated a beautiful hoop Rhythmic program, and Jessica Stachulak performed an ambitious Artistic program (see page 26 for profiles).

The show was filled with the ISI spirit, from Brittany Bowlen's amazing four-hula-hoop Spotlight program to



ActionPhotos.com

Brittany Bowlen wowed the Benefit Show audience with her Light Entertainment Spotlight program featuring the simultaneous use of four hula hoops.



Give the Gift of ISI!

Looking for a special holiday gift or stocking stuffer for your favorite ISI ice skater or coach? You're sure to get a smile with one of these!



Skaters & Coaches Handbook
The invaluable reference of detailed descriptions of requirements for each of the 80 ISI test levels, info on ISI testing procedures, skating glossary and competition performance rules. \$27 (includes shipping/handling)

ISI Test Standards DVD

A must-have for both coaches and skaters! Demonstrates the required maneuvers in each of the ISI tests from Pre-Alpha through Freestyle 10. \$28.95 (includes shipping/handling)

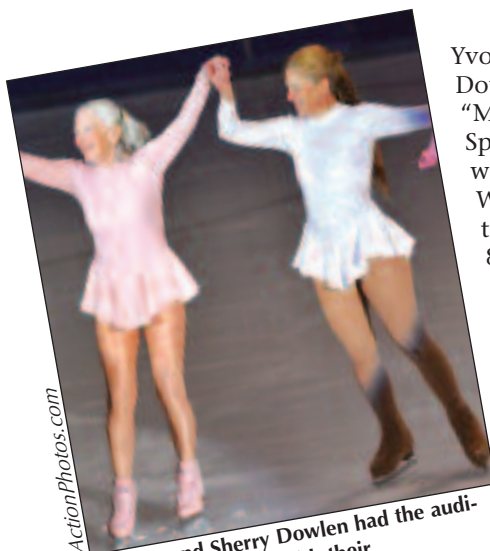


Calligraphic Silhouette Note Cards by ISI Professional member Rikki Samuels
Proceeds benefit ISIA Education Foundation programs. 10 cards and envelopes, \$9 (includes shipping/handling) 2 boxes, \$15 (includes shipping/handling)



Ice Skating Institute

To order, go to www.skateisi.org
(see Skaters and Coaches home pages)
or call (972) 735-8800.



Yvonne and Sherry Dowlen had the audience all choked up with their "Mother/Daughter Special" program.

Yvonne and Sherry Dowlen's touching "Mother/Daughter Special." Yvonne was the oldest Worlds competitor this year, at 83 — but she both looks and skates like a woman a fraction of her age. It must be true that the ice keeps skaters young. The oldest male competitor, Ken Miller, is 80 and also could pass for a man decades younger.

Just when we thought the show couldn't get any better, it was time for 2008 U.S. Senior Ladies Champion Mirai Nagasu to perform. The 15-year-old was pure graceful energy as she effortlessly executed a triple loop, triple toe loop and double Axel, but it



Benefit Show guest star and U.S. Senior Ladies Champion Mirai Nagasu brought down the house, then stayed late into the evening greeting her enthusiastic audience and signing autographs.



was the flexibility of her spin positions that took our breath away. I'm not sure who had more fun at the meet-and-greet session after the show, the crowd or Mirai. She stayed late into the evening, until every last audience member had gone home with her autograph.

A heartfelt thank-you goes out to all of you who have contributed in any way to the Foundation this season; it is your generosity that makes dreams come true. The five-year capital fund drive is now in full swing. For more information on this or any of the ISIA Education Foundation's programs, please visit www.skateisi.org and click on the Education Foundation tab on the toolbar. ●

ISIA Education Foundation Donations

5-Year Capital Drive Contributors

Facility Management Corp.

Larry & Lorraine Fies

ISI District 1

ISI District 8

MIRMA

Burt & Judy Sniffen

Boyd & Barbara Wietecter

Zamboni Co.

Donors

ISI District 4 (in memory of Doug Brown)

Richard Zamboni

Contributors

Lynne Attaway (in memory of Robert Unger)

Gaby Corcoran-District 4

ISI (in memory of Louise Hoggan)

International Gay Figure Skating Union

Laurie D. Valiga (in memory of Robert Unger)

Friends

Scott McCoy

Judith Arms

Coaches & Friends of Clearwater Ice Arena

(in memory of Diane Lane)

Glyn Jones (in memory of Diane Lane)

Paige Wardell (in memory of Robert Unger)



5-Year Fund Drive Pledge

I hereby pledge a total of \$_____ toward the ISIA Education Foundation Fund Drive. I understand all pledges may be paid over a period of 5 years.

- ☐ \$500
- ☐ \$1,000
- ☐ \$2,000
- ☐ \$5,000
- ☐ \$10,000

I wish to be invoiced:

- ☐ Annually
- ☐ Semi-annually
- ☐ Quarterly

Name _____

Address _____

City _____

State _____

ZIP _____

Phone _____

E-mail _____

Signed _____

All contributions are tax-deductible to the full extent of the law (IRS #36-3638131). Mail to: ISIA Education Foundation
6000 Custer Road, Building 9
Plano, TX 75023

CALL TOLL-FREE 1.800.442.1041

BEST BUY FIGURE SKATING

HAS THE BEST SELECTION OF FIGURE SKATING APPAREL AND THE MOST COMPETITIVE PRICES YOU'LL FIND ANYWHERE!

REBEL DRESSES 25% OFF!

USE COUPON CODE REBEL25 Expires 10-15-08

HOME OF THE VIRTUAL SKATE-FIT!

Contact us today for your perfectly sized skate!

BESTBUYBUCK\$!

We Love To Reward Our Loyal Customers!

Visit us online at bestbuyfigureskating.com for more info!

2008 Scholars Shine, On and Off the Ice

by Dianne Powell

The ISIA Education Foundation is proud to announce the recipients of its 2008 college scholarships. Congratulations to Emily Miller and Jessica Stachulak.



Emily Miller, Sioux Falls, S.D.

ISI activities: ISI Individual member (11 years) ISI Professional member (2 years) • Freestyle 7, Dance 2 • ISI World Recreational Team Championships (2000, 2004) • ISI competitions (25) • Group and private lessons instructor • Volunteer

Scholastic and community activities/achievements: National Honor Society • Marching Band/Color Guard • Warrior Club • Peer Helpers • Renaissance Committee • Governor's Leadership Excellence Award • Washington Award for Excellence

Whether Emily Miller is working on her skills, competing,

performing, coaching or choreographing routines for younger skaters, she says figure skating is a passion for her.

"Not only do I love to skate, but I take enormous pride in coaching and helping others," says Emily. "All of my non-school activity focus has been centered on figure skating, and over the years my passion has only grown exponentially for the sport."

Heather Frazer, skating director for the Sioux Falls Figure Skating Club, praises Emily as both a skater and a coach. "Emily's performance has been superior," Frazer notes. "She is organized, dependable, enthusiastic and knowledgeable. Her outgoing personality, combined with her determination and perseverance, make her a guaranteed success."

While skating has been a key part of Emily's life, academics also play an important role. She maintained a 4.0 GPA in high school while taking accelerated and advanced placement classes, participating in extracurricular activities and earning recognition and awards for her accomplishments. Emily ranked first in her high school graduating class.

Now from *SkatingSafe, Inc.*
ultraCrash[®] Molded Elbow Protectors



HP4015 & HP4016
Molded To Surround The Elbow
Worn Under Retention Sleeve
(Included)

Inconspicuous &
Effective

No Flexibility Issues
20% Lighter

Years of Longevity
Like All
ultraCrash[®] Pads

Visit the web or call
for our full line of Fall Protection and Pressure Relief Products.
SkatingSafe, Inc.
(888) 299-2553 www.SkatingSafe.com

Bear Hill Sports
LIFE IS EASY. PRACTICE IS HARD.



bearhillsports.com
802-428-2511

During her senior year, she served as a classroom mentor for second-grade teacher Nicole Gardner-Fink, who describes Emily as energetic, mature beyond her years and a natural leader, role model and voice for her peers. "Emily has all the qualities and character traits that emulate success," Gardner-Fink says. "She has a positive, go-getter attitude which has allowed her to accomplish many things in school, athletics and her other interests. Emily will be an asset to the institution of higher learning and career of her choosing."

Emily is a freshman at South Dakota State University, majoring in electrical engineering.

she says. Skating has taught her "to remain kind, caring, honest and compassionate when interacting with people, and always remain willing to help other skaters and parents," Jessica adds.

In addition to skating and graduating from high school with a 4.29 GPA based on a 4.0 point system, Jessica enjoys volunteering in her community. She has volunteered with the Humane Society, in the park district's preschool program and at the Joliet Elks Lodge. She especially enjoys her work with the American Cancer Society's Relay for Life, where she has volunteered for five years, and as a counselor at Camp Anokijig in Plymouth, Wis., where she has served as a volunteer junior staff member instructing campers in horsemanship since 2003.

Darin Holden, program director for Camp Anokijig, describes Jessica as a leader and notes: "She epitomizes what can be right about today's young adults. With her drive and determination, she will, no doubt, take any opportunity provided and make the most out of it."

Glen Marcum, co-chair of Joliet Relay for Life, describes Jessica as a bright, mature, take-charge young person. "One thing I admire most about Jessica is her ability to work with other people," he says. "She does a wonderful job of listening to people, then making good decisions and acting on what she has heard."

Jessica is majoring in recreation management at Carroll University in Waukesa, Wis. "Someday I hope to run an ice arena facility similar to the one I know and love," she says. "I seek to repay figure skating for all that it has allowed me to become." ●

Jessica Stachulak, Joliet, Ill.

ISI activities: ISI Individual member (7) • ISI Professional member (1) • Freestyle 7 • ISI World Recreational Team Championships (2003, 2007) • ISI competitions (27) • Group and private lessons instructor • Volunteer

Scholastic and community

activities/achievements: National Honor Society • Pi Sigma Pi (History Honors Society) Drug Prevention Club • Joliet Township Math Team • Academic Medallion recipient Relay for Life Spirit Award • Outstanding Student of America • Student aide

Jessica Stachulak refers to Joliet Park District's Inwood Ice Arena as her second home. "Figure skating and ISI competitions have been a part of my life for as long as I can remember,"



ActionPhotos.com

SP-Teri



ZERO GRAVITY LICENSE TO FLY

The latest light weight skating boots.

Standard Features:

V notch for optimal ankle flex.

Low cut back for ideal toe pointing and better Achilles comfort.

Cushioned insole for shock absorption with anti friction top cover.

Suede synthetic lining to wick moisture from feet and ankle comfort.

Available at a SP-Teri dealer near you.

SP-Teri Co., Inc. 436 North Canal Street, Unit 1 • South San Francisco, CA 94080

Phone (650) 871-1715 • Fax (650) 871-9062 • www.spteri.com

Focus on JUMP & SPIN

Simple & fun: Two parts for two-person teams



by Randy Winship
ISI National Skating
Program & Events
Coordinator

Who can do Jump & Spin events: Jump & Spin events are open to all skaters in Pre-Alpha level and higher. It's one of the few ISI competition events in which skaters from different skating levels can compete together.

Jump & Spin event description: This event is usually done on half ice. Two skaters enter the ice together and stop. Skater No. 1 begins and performs the same chosen jump two times, and stops. Skater No. 2 then performs the same chosen spin two times, and stops. Both skaters then exit the ice together. Only the best performance by each skater will be scored against the performance of other teams in the same event group.

Like the Solo Compulsories event, there can be no other required test level or uncaptured maneuvers performed in the Jump & Spin event.

The best thing: The best thing about a Jump & Spin event is that there is no program routine and nothing to pre-

pare. You will already be practicing your jumps and spins for your other program routines, so why not grab your friend and win another medal?

There's no performance pressure of a program, and you can be on the ice with your friend, so it's also a great way to compete in your first ISI competition.

There is no score for costumes; some partners get matching T-shirts, hats or skating dresses and others just wear whatever they choose. It's simple and easy, so ask your coach about this fun event.

Jump & Spin event levels: Two-person teams are divided into the following four event levels.

Low	=	Pre-Alpha-Delta skaters only
Medium	=	Skaters from Freestyle 1-3 and below
Intermediate	=	Skaters from Freestyle 4-5 and below
High	=	Skaters from Freestyle 6-10 and below

If partners are of different levels, they will compete in the level of the higher partner.

Maneuver selections:

	Jump Choice	Spin Choice
Low	2-foot hop or bunny hop	2-foot spin
Medium	Half flip or toe loop jump	2-foot or 1-foot spin
Intermediate	Half loop or Axel jump	Sit spin or camel spin
High	Double Salchow or double loop	Flying sit or flying camel spin

In this event, skaters are not judged by the difficulty of the maneuver chosen, but rather the technical accuracy of the performance.

Competition event groups: Skater teams are grouped together within the event levels (listed above) but not by the specific Freestyle test level. Groups are also usually divided — based on the entries received — either by the average age of the two skaters on a team or by the age of the oldest skater. The competition director may also combine genders for this event.

Judging criteria: All three judges only judge the technical accuracy of the best performance for the maneuvers performed.

Featured event: This is a relatively new ISI event and it has been gaining popularity across the country. It's also a special "featured event" in 2008 for all of our national competition events, so it could soon be offered at your local and district competitions, too. ●



**We are the
SKATE EXPERTS!**

**Cyclone Taylor has the best
prices and the best selection
on skates and skate wear!**

All boot fittings are
completed by skate experts. For fast
and efficient service call us at
1-800-880-7505 or visit
www.figureskatingdeals.com



CYCLONE TAYLOR
FIGURE SKATING

4th Annual ISI Holiday Card Creativity Contest

Will YOUR design become the official
ISI 2008 holiday card?

The ISI Holiday Card Creativity Contest has become an annual tradition with ice skaters across the country. If your design is chosen, it will be used as the official ISI 2008 holiday card and you will receive recognition in *Recreational Ice Skating* magazine as well as on the card itself.*

Send us your original design following these guidelines:

- 8 1/2" X 11"
- Any medium (paint, marker, pencil, pastel, etc.) – but two-dimensional only, please.
- Be sure to sign your art!
- Do NOT fold or bend your art.
- You may send the artwork only, or you may add a sentiment if you wish.
- Include your full name, address, telephone number and ISI member number on a separate note.
- **Submissions MUST be received in the ISI office no later than October 15, 2008.**
- NOTE: Materials cannot be returned.

Send to:

Ice Skating Institute
Attn: Magazine Editor
6000 Custer Rd., Bldg. 9
Plano, TX 75023

*The winning artist must assign the Ice Skating Institute ownership of, and all rights to, the winning design. Current ISI members of any age and membership level are eligible to participate.



E-mail questions to editor@skateisi.org



WeSkATE™

Adventures & Activities



Silly SkateSpeak

Without reading the story first, ask a family member or friend to give you a list of the kinds of words indicated in the parentheses under each blank line. It's OK if they are funny words. After you've written them in, read the story aloud for a chuckle!



Noun: Person, place or thing
Verb: Action word (skate, jump, etc)
Adjective: descriptive word (loud, wrinkled, blue, etc.)

Lizzie and Alex returned from the ISI World Recreational Championships in _____ where they both had a _____ time. Together they brought home _____ medals and are excited about taking them to _____ for show-and-tell.

(a state) (adjective) (number) (place)

Lizzie's favorite event was her _____ routine. "I was so nervous at first. My stomach felt like it had _____ in it and they were doing cartwheels! But as soon as I heard my name announced and saw all the _____ in the stands _____ for me, I couldn't wait to show them my program – especially my _____!" she said.

(ISI event category) (insect - plural) (noun - plural) (verb ending in -ing) (skating move)

Alex's favorite event was the Surprise event, where Randy made everybody _____ through an obstacle course while _____ a _____ and not letting it pop or touch the ice. But Alex is very fast, so it was easy for him to get _____ place in that event.

(verb) (verb - ending in -ing) (noun) (number)

On Wednesday at the opening parade, Lizzie and Alex both _____ with their team, carrying the _____ from their rink. At the party afterward, they played laser tag, miniature _____, _____ on the climbing wall, and took turns dunking their friend _____ in the dunk tank.

(verb - past tense) (noun) (game) (verb - past tense) (name of friend)

Lizzie and Alex also made many new friends, whom they continued to see at the rink for the rest of the week. One girl was from _____ and they met a _____ their own age from _____. All the kids traded _____ and exchanged email addresses so they can keep in touch until next year's Worlds in San Jose, California.

(a place) (noun) (foreign country) (noun - plural)

Can You Name These Skating Skills?

Carefully study the following word arrangements,
which represent skating skill terms.

1. J U M P (on Freestyle 6 test)

2. EUQSEBARA (on Freestyle 3 test)

3. E A G L E
(uncaptured move)

4. LOOP
LOOP (on Freestyle 7 test)

5. - - IP (on Freestyle 1 test)

6. S
STOP (on Beta test)
O
P

7. NRUT 3 (on Freestyle 4 test)

8. L
E
A
F (uncaptured move)

9. RFI } (on Freestyle 5 test)

10. F T SPIN (on Freestyle 6 test)
O O
O O
F T

Answers: 1. Split Jump 2. Backward Arabesque 3. Spread Eagle 4. Double Loop 5. Half-Flip 6. T-Stop 7. Backward 3 Turn 8. Falling Leaf 9. Right Forward Inside Bracket 10. Cross-Foot Spin

ISI Skaters Speak Greek!

Did you know that Alpha, Beta, Gamma and Delta
are the first four letters of the Greek alphabet?



There are 24 letters in the Greek alphabet.
It was the first alphabet to use separate symbols for each
vowel and consonant, and is the oldest alphabet in use today!

calendar.....

ISI-endorsed competitions & shows/exhibitions

Deadline for the next *RIS* Calendar: Oct. 1

For regular calendar updates, see www.skateisi.org, Skating Competitions

competitions

september

- 6-7 **Westminster, Calif.**
Westminster Ice Arena
ISI Open Competition
- 19-21 **Arlington, Texas**
ICE at The Parks
5th Annual ISI Open
Competition
- 27-28 **Valencia, Calif.**
Ice Station Valencia
3rd Annual Autumn
Classic

october



- 3-5 **San Francisco**
Yerba Buena Ice
Skating Center
ISI Adult
Championships
- 10-11 **Casper, Wyo.**
Casper Ice Arena
Autumn Skate 2008
- 17-19 **Aliso Viejo, Calif.**
Aliso Viejo Ice Palace
Annual ISI Open
- 25 **Naperville, Ill.**
All Seasons Ice Rinks
Great Pumpkin
Competition
- 25-26 **Rockland, Mass.**
Winterland Skating
School
22nd Annual
Halloween Classic
- 25-26 **Irmo, S.C.**
Palmetto Skate Club
Palmetto Classic

november

- 1 **Boardman, Ohio**
The Ice Zone
Autumn Fest
- 1-2 **Yorktown, Va.**
Hampton Roads IcePlex
7th Annual Fall Classic
- 7-9 **Northbrook, Ill.**
Northbrook Sports
Center
Northbrook Park
District Falling Leaf
Open
- 9 **Anaheim, Calif.**
Anaheim ICE
8th Annual Anaheim
ICE Synchronized
Team Competition
- 29-30 **Skokie, Ill.**
Skatium
All American Team
Competition

december



- 5-7 **Burbank, Calif.**
Pickwick Ice Center
ISI Artistic Challenge
- 5-7 **White Bear Lake, Minn.**
White Bear Lake Sports
Center
White Bear Lake
Holiday Open 2008

2009

february

- 6-8 **Glenview, Ill.**
Glenview Ice Center
February Freeze



- 13-15 **Dallas**
Dr Pepper StarCenter
ISI Winter Classic

april



- 17-19 **Chicago**
Arctic Ice Arena
ISI Synchronized
Championships

- 25-26 **Anaheim, Calif.**
KHS Ice Arena
Jump Into Spring Annual
ISI Open Competition

may



- 23-24 **Orlando, Fla.**
RDV Sportsplex
ISI 50th Anniversary
Skating Championships

july



- 27-
Aug. 1 **San Jose, Calif.**
Sharks Ice at San Jose
ISI World Recreational
Team Championships

shows & exhibitions

november

- 24 **Brentwood, Mo.**
Brentwood Ice Arena
Holiday Ice extravaganza

december

- 3-4 **Honolulu, Hawaii**
Ice Palace
Nutcracker
- 12-14 **Evanston, Ill.**
Robert Crown Center
34th Annual
Nutcracker on Ice
- 28 **Arlington, Texas**
ICE at The Parks
Holiday in The Parks

2009

april

- 5 **Brentwood, Mo.**
Brentwood Ice Arena
Once Upon the
Ice...Dreams Come
True

may



- 26-29 **Orlando, Fla.**
Hilton in the Walt
Disney World® Resort
ISI Ice Arena
Conference &
Trade Show

When it comes to figure skating videos we have it all.

Everything from Sonja Henie in *Sun Valley*
Serenade to Sarah Hughes gold medal
performance at the 2002 Olympics.

800-872-1996 • www.skatetape.com

Skatetape.com

ISI ARTISTIC CHALLENGE

Pickwick Ice Center
Burbank, California

December 5-7

Entry Deadline: Oct. 15, 2008
www.skateisi.org



**Get in touch with your *Artistic* side
in the entertainment capital of the world!**

The spotlight is calling you to the fourth annual ISI Artistic Challenge in Burbank, Calif., land of the world-famous movie and TV studios. This is the only national event that gives you the chance to showcase your flair for the dramatic side of skating, with an emphasis on creativity, and no technical score.

Artistic Challenge is quickly becoming a favorite for recreational skaters, featuring Themed Spotlight, Themed Production, Rhythmic Skating and Ensemble events. Make your plans now for your chance to shine in Burbank!





**Take The
Edge Off
The Cold**

Designer & Manufacturer of Fine Skating Accessories

Say Goodbye To Cold Feet



- Keep feet warm
- Extend skate boot life
- Protect boots from moisture & wear
- Add support to broken down skates
- Keep laces from slipping and secure the boot fit
- Attractive stylish design

BOOT GLOVES

P.O. Box 893 Call Toll Free 1-877-300-8335 bootgloves@icelight.biz
 Seal Beach, CA 90740 Fax: 1-562-431-0223 www.icelight.biz

classified advertising


Holiday Cards for Skaters

Unique whimsical holiday cards catering to the ice skater or the winter sports enthusiast. 10 cards per package, \$24 + shipping. Action skating portraits and heirloom gold skating pendants available, too! Order now for the holidays. See at www.BarbarAnn.com, (440) 546-9152.



To place classified advertising, call Carol Jackson, advertising sales manager, at (972) 735-8800, fax to (972) 735-8815 or send e-mail to cjackson@skateisi.org. The deadline for the next issue of *RIS* is Sept. 25.

**Make Your Own Ice Rink
with Nicerink®**



*A pristine sheet
of ice
that's all yours...*

- NiceRink® Bracket sideboard support system
- Ultra strong NiceRink® liners
- NiceRink® plastic boards
- Outdoor rink resurfacers

*Everything you need
to make your own!*

*NiceRink®
plastic boards
& brackets*

888-NiceRink (642-3746)
 Any size – details online at www.NiceRink.com

advertiser index

Bear Hill Sports	26
Best Buy Figure Skating	25
Classifieds	34
Cyclone Taylor Figure Skating	28
Ice Light Productions	34
Lindy Z.	36
Nice Rink.	34
Riedell Skate Co.	9
Skatetape.com	32
Skating Safe	26
SP-Teri Co.	27
Super-Glide	35
Valley Ice	7
Zuca.	2



Priscilla Hill's
Skating Show



Oksana Baiul
Fashion Week



WOW!
Skating in my house!



Learn to Skate
Anywhere



Endless Practice Time!

SUPER-GLIDE®
WWW.SUPERGLIDESKATING.COM

Super-Glide Sales
Skating Anywhere, Anytime, Any Size

ph. (305) 218-2966
fax (727) 231-0930



Mexico Commercial Facility

A woman with dark hair, wearing a red headband, a red tank top with a plaid scarf, and black leggings, is posing in roller skates. She has her hands on her hips and is looking towards the camera with a smile. The background is a plain, light blue-grey gradient.

LINDY Z

expressions in style...

**When you skate
with attitude...**

**Only the best
will do.**

LINDY Z

Phone #: (818) 703-8188

www.lindy.com