

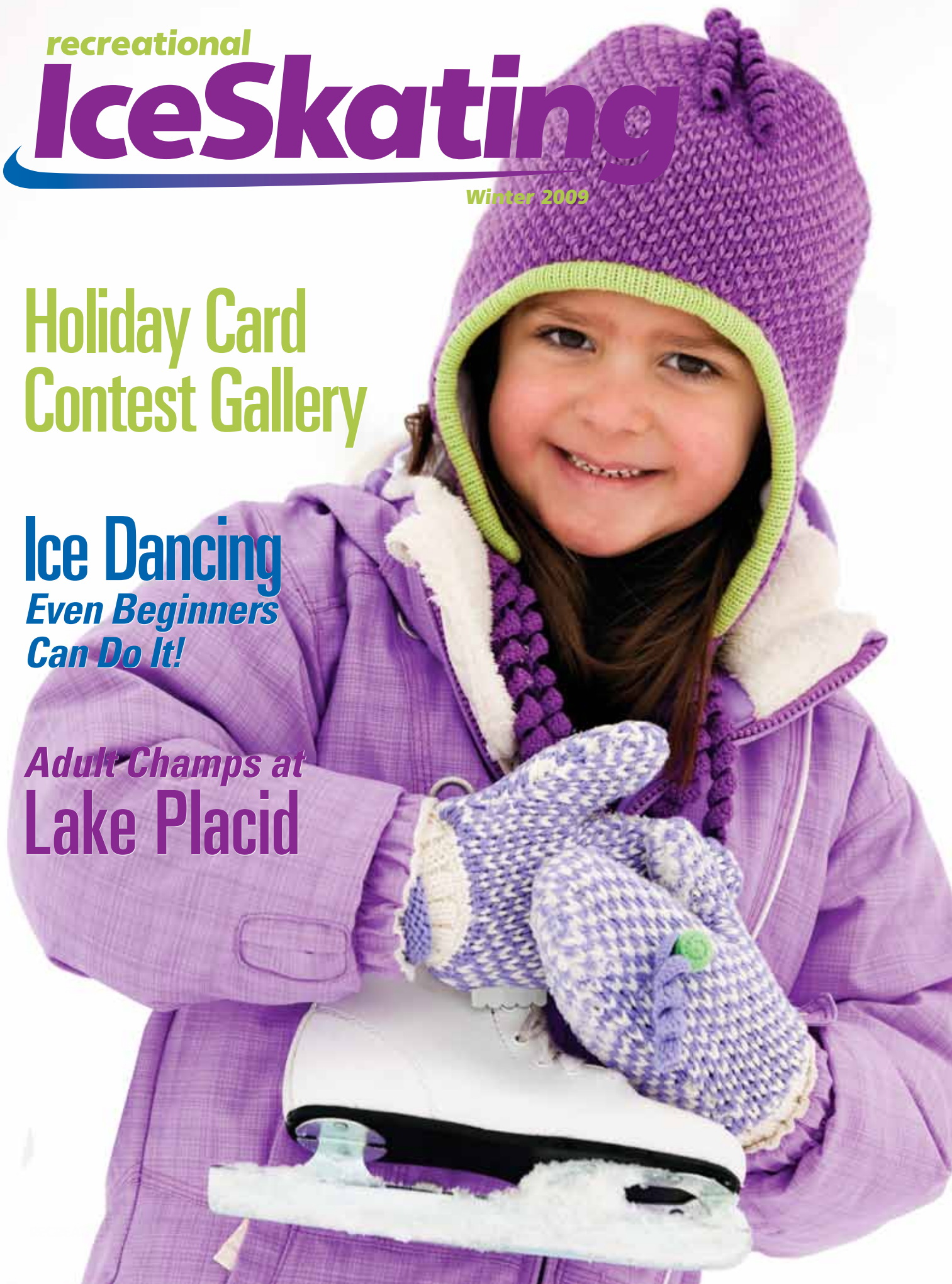
recreational  
**IceSkating**

Winter 2009

**Holiday Card  
Contest Gallery**

**Ice Dancing**  
*Even Beginners  
Can Do It!*

*Adult Champs at  
Lake Placid*







THE ONLY CUSTOMIZABLE  
SKATE BAG YOU CAN SIT ON!

Are you in the know about ZÜCA? Get special promotional offers and be the first to see new products by following us on Twitter and Facebook. Search for ZÜCA Inc!



Check out our newest designs at [www.zuca.com](http://www.zuca.com)!



Argyle

Checkerz

Flowerz

Zebra

# what's inside

Recreational Ice Skating

Winter 2009/Vol. 34, Number 2



**Publisher**  
Ice Skating Institute

**Editor**  
Lori Fairchild

## **Editorial Advisors**

Peter Martell  
Randy Winship  
Sean Flynn  
Dawn Malone

**Print Production &  
Advertising/Sponsorship  
Manager**  
Carol Jackson

**Graphic Designer**  
Logan McCoy

*Recreational Ice Skating* ISSN 0164-4106 (USPS 361-570) is published quarterly; Fall, Winter, Spring, and Summer; by the Ice Skating Institute, 6000 Custer Rd., Bldg. 9, Plano, TX 75023. Annual Subscription Rate is \$12.00 per year. Periodicals postage paid at Plano, TX, and at additional mailing offices. POSTMASTER: Send address changes to *Recreational Ice Skating*, 6000 Custer Rd., Bldg. 9, Plano, TX 75023. Printed in the U.S.A.

Address Subscription Requests to *Recreational Ice Skating*, 6000 Custer Rd., Bldg. 9, Plano, TX 75023. Extra copies are \$4.00 each (includes postage).

©2009 by the Ice Skating Institute. Reproduction in whole or in part is prohibited unless expressly authorized in writing by publisher. All rights reserved. Opinions expressed by contributors do not necessarily represent the views of the Ice Skating Institute, the publisher or the advertisers. Submissions of manuscripts, materials, photographs, and artwork are made at mailer's risk and must include self-addressed envelope with sufficient postage for return. No responsibility will be assumed for unsolicited materials. ISI reserves the right to edit material submitted for content and space consideration.

## ► features

<b>Adult Champs at Lake Placid</b> .....	<b>7</b>
Results & More	
<b>Adult Champs Photo Gallery</b> .....	<b>8</b>
<b>2009 Skating Scholars.</b> .....	<b>11</b>
ISIA Education Foundation scholarship recipients	
<b>Holiday Card Contest Gallery</b> .....	<b>16</b>
<b>5 Skaters Pass Dance 10</b> .....	<b>20</b>

## ► departments

<b>Spotlight</b> .....	<b>6</b>
<b>ISIA Education Foundation Report.</b> .....	<b>14</b>
<b>High-Level Tests.</b> .....	<b>19</b>
<b>Competitors' Corner.</b> .....	<b>22</b>
<b>weSKATE Kids Adventures &amp; Activities</b> .....	<b>24</b>
<b>Parents' Page.</b> .....	<b>27</b>
<b>Calendar.</b> .....	<b>28</b>

#### ICE SKATING INSTITUTE

6000 Custer Rd., Bldg. 9  
Plano, TX 75023  
Phone: (972) 735-8800  
Fax: (972) 735-8815  
e-mail: [isi@skateisi.org](mailto:isi@skateisi.org)  
[www.skateisi.org](http://www.skateisi.org)

#### ISI INTERNATIONAL HEADQUARTERS

##### Executive Director

Peter Martell

##### Director of Skating Programs & Events

Randy Winship

##### Director of Management Programs & Services

Sean Flynn

##### Director of Member Services

Dawn Malone

##### Controller

Donna Crooks

##### Assistant Controller

Elizabeth Kibat

##### Membership Department Manager

Kathy Chase

##### Membership Coordinator

Mary Ann Mangano

##### Print Production & Advertising/ Sponsorship Manager

Carol Jackson

##### Graphic Designer

Logan McCoy

##### Information Services Coordinator

Jeff Anderson

##### Administrative Assistant

Angela Tooley

#### ISI OFFICERS

President	Jim Hartnett
1st Vice President	Mike Paikin
2nd Vice President	Janice Forbes
Treasurer	Rob McBride
Secretary	Margy Bennett
Immediate Past President	Jim Lange

#### DIRECTORS

District 1	Tiesha Potvin-Coale
District 2	Robyn Bentley
District 3	Lisa Fedick
District 4	Christine Wilson Brinton
District 5	Larry LaBorde
District 6	Toni Cooper
District 7	Jamie Baringer
District 8	Susan D'Aquila
District 9	Bridgid LaMear
District 10	Char Martin
District 11	John Kanicka
District 12	Debbie Lane
District 13	Allison Petsch
District 14	Paige Scott
District 15	Bert Blanchette
District 16	Cindy Solberg
District 18	Glyn Jones
Hockey	Dan Smith
Builders & Suppliers	Doug Peters
Instructors	David Santee
Commercial Facilities	Liz Mangelsdorf
Public/Not-for-Profit Facilities	Sara Bolan
Schools/Colleges/ Universities	Alane Swiderski
iAIM Chair	Kevin McCormack
PSA Representative	Gerry Lane
USFSA Representative	Homer Hagedorn
ISIA Asia Representative	Raul Gomes
AMMA Representative	Trudy Ivory
MIAMA Representative	Dean Mulso
MIRMA Representative	Judy Sniffen
Education Foundation	Don Bartelson
Lifetime Honorary Member	Carol Zdziebko



# HOW TO GET YOUR NAME, LETTER OR PHOTO PUBLISHED

Following these simple guidelines will help you make it into the pages of *Recreational Ice Skating* magazine! Please note that ISI has more than 30,000 individual skater members and a limited number of magazine pages each quarter, so we cannot guarantee placement — but here is what you need to do to increase your odds.

## LETTERS

- You **MUST** include everything in this 6-point checklist:
  1. Your full name
  2. Your ISI member number (the number on your magazine mailing label and membership card)
  3. Your age
  4. Your ISI test level
  5. The name of your arena
  6. Your city and state
- If you have a skating question, be as specific as possible. Technical questions are answered by qualified ISI staff but should not be considered a substitute for coaching.
- All letters are printed at the discretion of the editor and may be edited for clarity, accuracy and space.
- E-mail is preferred. Please send your correspondence to: [editor@skateisi.org](mailto:editor@skateisi.org).

## PEN PALS

- Pen pal requests are accepted via e-mail only, to [editor@skateisi.org](mailto:editor@skateisi.org).
- You **MUST** include all information in the 6-point checklist, above, when requesting a pen pal or a listing.
- Members' e-mail addresses are never published in the magazine.
- NOTE: We do not "match up" pen pals. We simply publish your requests and forward your letter to specifically requested members. The ISI does not guarantee or monitor member-to-member correspondence.

## PHOTOS

We love to receive your photos! However, please note that, first, we receive hundreds and sometimes even thousands of images from a single event; and second, there are certain criteria that photos must meet in order to be considered for publication. If you follow these guidelines, you are more likely to see one of your photos in print:

1. Only high-resolution images will be accepted. Make sure your camera is set on the highest resolution when the photos are taken; manipulating the photos in an image-editing program after the photos are taken does NOT increase resolution!
2. Photos must be sent as individual jpg attachments. Please do not send photo collages or photos pasted into your e-mail document. You may send multiple images in a single e-mail, and "zip" or "stuff" them if you wish. No links to photo Web sites or online photo albums, please!
3. Limit the number of photos you send to a few (three to five) of your favorites. Sending dozens does not increase your chances of publication.
4. Choose the very BEST shots you have. Pay attention to background and clarity. We like to see happy, smiling faces that illustrate what recreational ice skating and ISI are all about. Say CHEEEEESE!
5. Please note that individual photo selection is random in terms of identification. We attempt to prevent publication of multiple images of the same individuals in a given issue, but duplication can sometimes occur. Selection is based primarily on variety and quality.





## Joannie Rochette

Matches her Riedell boots with  
John Wilson blades

2009 World Championships  
Silver Medalist

2009 ISU Four Continents Championships  
Silver Medalist

5-time Canadian Champion

# iSkate

Do You?



**Share** + stories & photos  
on the Riedell Facebook page  
or [iSkateRiedell.com](http://iSkateRiedell.com).

See our **NEW** 2009 boot & blade  
collection at [riedellskates.com](http://riedellskates.com).



# Riedell.

# spotlight

## Glitter Girl Wins Holiday Card Contest



**Kelsey Barnes**

It wasn't the glitter alone that made Kelsey Barnes' holiday card entry sparkle, but it was an appropriate finishing touch for her festive skating snowman family.

Kelsey, 17, is a high school senior in Frisco, Texas who loves art as much as ice skating. And, she notes, "Like a true figure skater — I absolutely love glitter!" An ISI member since age 5, she has reached level 6 in both Freestyle and Ice Dancing. She skates at Dr Pepper StarCenter-Plano and coaches learn-to-skate classes at Dr Pepper StarCenter-Frisco.

For her holiday card design, Kelsey used cut paper to create a fun-loving snowman family

skating hand-in-hand. "Because I knew that people celebrate all kinds of holidays, I didn't want to focus just on Christmas," she explains. "I wanted to do a family-oriented wintery scene using cool colors."

Kelsey says she's happy working in any medium, and she is currently developing a sculpture portfolio for her Advanced Placement 3-D class. She hopes to major in fine arts at Southern Methodist University next year.

Kelsey's design was selected by a panel of ISI judges to be used as the organization's official holiday greeting card for 2009. Thanks to all who participated in this year's contest. A gallery of all entries can be found on pages 16-17, and on the ISI Web site at [skateisi.org](http://skateisi.org).



## How Do You Spell JOY? St. Louis Synergy!

Six of the St. Louis Synergy synchronized skating teams couldn't contain their joy over this year's ISI Holiday Card Creativity Contest. So they decided to spell it out in black and white — on ice, in synchro holds, illustrating the togetherness of both synchronized skating and the holidays.

Part of the Metro Edge Figure Skating Club of Missouri, the St. Louis Synergy synchro program includes 95 skaters who skate at the Webster Groves Ice Arena. In addition to the six teams pictured, with an age range of 4 to 18, the program is also in the process of developing an Open Collegiate team.

Kudos to this enthusiastic group and its leaders, who gathered on a weekend to share their holiday spirit with ISI.



### Correction: Yerba Buena Takes Third at Worlds

Following the conclusion of the ISI World Recreational Team Championships in San Jose, we discovered a programming error in the computation of team points for the Production Team events only. The event placements are accurate; however, due to a glitch in the calculation of the overall team standings, the Yerba Buena Ice Skating Center should have received the third-place overall trophy. We apologize for this error and congratulate the Yerba Buena skaters and coaches on their achievement.





# Adult Skaters Bask in Lake Placid's Glory

by Lori Fairchild

"We didn't know there were so many different colors of leaves!" was a common refrain as competitors arrived at the 2009 ISI Adult Championships in Lake Placid, N.Y. Autumn in all its scenic glory proved to be just one of the many highlights of the early October weekend.

"The competitors loved the unique experience of skating on Olympic ice," noted Randy Winship, ISI director of skating programs and events. "And the quality of the ice at the Olympic Center was amazing. We thank facility manager Denny Allen and ORDA for this incredible opportunity."

ISI President Jim Hartnett and board members Lisa Fedick, Margy Bennett and Robyn Bentley worked with Winship to make the event seamlessly successful.

The Crystallites from Tampa Bay Skating Academy-Countryside once again claimed the first-place Erika Amundsen Award. The team has taken top honors at Adult Champs for 10 of the competition's 11 years.

"We would like to thank ISI for having an annual competition just for adults," said Crystallites Co-Captain Pam Huff. "We are a small team of just 10 skaters, and our team practices for one hour per week all year, usually on a small rink in the middle of a shopping mall. Spreading our routines out to cover a full-size rink is a big job that our coach, Nadine Pearen, does wonderfully."



**TBSA-Countryside Crystallites took first at Adult Champs, for the 10th time in the competition's 11-year history.**

"To be able to compete on the ice surface that hosted the Miracle on Ice was an amazing thrill," Huff added. "Each skater can now say that they competed on an official Olympic surface — what a gift to each and every one of us. We will all carry fantastic memories of our own 'Miracle on Ice!'"



## TOP 10

PLACE	ARENA	POINTS
1	TBSA-Countryside	282.0
2	Ellenton Ice & Sports Complex	254.5
3	Sacred Heart University	155.0
4	Kettering Adult FSC	136.5
5	City of Shaker Heights	87.0
5	FMC – Taunton	87.0
7	Channel Islands Ice Center	81.0
8	FMC – Greenfield	72.0
9	Skating Club of Greater Youngstown	66.5
10	Over the Edge Inc	54.0

For a complete listing of teams and results, go to [skateisi.org](http://skateisi.org).



# Tia's Skatewear®

*Forever Stylish Forever Tia's*

*Trendy & Fashionable  
Child & Adult Sizes*

**1-800-837-2042**

**WWW.TIASSKATE.COM**

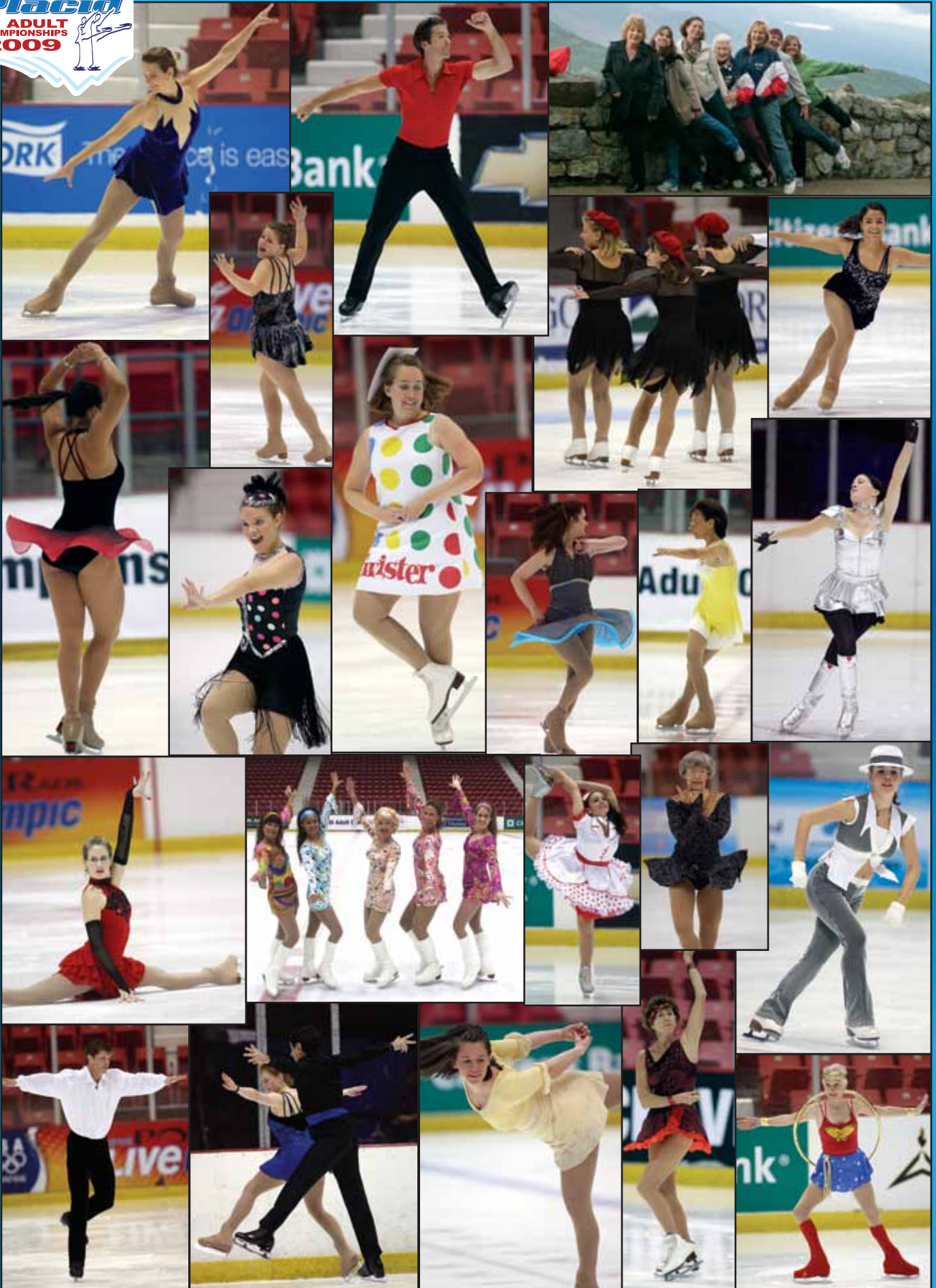
**MADE IN THE USA**







# 2009 ISI Adult





LAKE  
**Placid**  
ISI ADULT  
CHAMPIONSHIPS  
**2009**



# ISI **WINTER** CLASSIC



**Feb. 12-14**

Anaheim ICE & Westminster ICE • Anaheim, CA  
Entry & Test Deadline: Dec. 1

## ***A Sweet Getaway: Valentine's Weekend in Anaheim***

What could be better than a winter escape to southern California for Valentine's weekend? Skating in the 25th Annual ISI Winter Classic, that's what! Head to the home of Disneyland, Universal Studios and Knott's Berry Farm for some February fun. The last time this event was held in Anaheim, it drew 1,800 ISI skaters, making it the biggest Winter Classic on record!



### **FOR MORE INFORMATION**

[skateisi.org](http://skateisi.org)  
[anaheimoc.org](http://anaheimoc.org)  
[anaheimice.com](http://anaheimice.com)

*Schedule and venue subject to change.*



**2010 ISI NATIONAL SKATING EVENTS**



# 2009

## Skating Scholars

The ISIA Education Foundation congratulates 2009 scholarship recipients Alissa Kitchen, Briana Pigott and Theresa Semmelmayr.

### Alissa Kitchen



ISI skating holds many happy memories and lessons for Alissa ("Ali") Kitchen, from the dozens of shows and competitions in which she has skated individually, in Spotlight events with family and friends and on synchro teams, to her recent roles as instructor, judge and mentor.

"My long relationship with ISI naturally makes me an advocate for ISI," says Ali, a 14-year ISI member who has entered as many as 11 events in a single competition. "I am proud to teach every skater about ISI. My dream is to share my love for skating, the lessons skating has taught me and the friendships that have blessed my life. I want to be the one to guide them toward what has enriched my life so deeply, and teach them that skating is for fun."

Ali's cheerful personality, sunny smile and contagious enthusiasm are welcome additions wherever she skates and studies. She regularly traveled two hours twice weekly from her home in Columbia, Mo. to skate with her synchro team at Webster Groves Ice Arena in the St. Louis area.



SP-Teri 



### ZERO GRAVITY LICENSE TO FLY

The latest light weight skating boots.

Standard Features:

V notch for optimal ankle flex.

Low cut back for ideal toe pointing and better Achilles comfort.

Cushioned insole for shock absorption with anti friction top cover.

Suede synthetic lining to wick moisture from feet and ankle comfort.

Available at a SP-Teri dealer near you.

SP-Teri Co., Inc. 436 North Canal Street, Unit 1 • South San Francisco, CA 94080  
Phone (650) 871-1715 • Fax (650) 871-9062 • [www.spteri.com](http://www.spteri.com)



“Alissa’s love for skating is infectious and she brightens the rink when she’s there,” notes her coach, Bridgid LaMe-ar. “Her positive nature and love for children go hand-in-hand. Ali not only strives for excellence, but achieves it. She isn’t satisfied with ‘good enough’ but truly takes the extra steps needed to be the best at whatever her task. She is an ISI skater through and through who brings joy to our next generation of skaters.”

Ali graduated in the top 5 percent of her class at Rock Bridge Senior High School in Columbia, Mo., where she was active in myriad academic and community activities. She is now a freshman at Miami University in Ohio, where she is majoring in biology and U.S. history, with a minor in Spanish. The campus is home to the new Goggin Ice Center and its world-renowned varsity synchronized skating team.

## Briana Pigott



Briana Pigott is a classic example of the ISI “skating scholar” who has successfully balanced her life both on and off the ice.

“I have worked hard all my life to balance the demands of school and skating. It took a lot of work to find this very delicate balance, especially once I entered high school,”

says Briana, who credits her parents’ love and support for helping her achieve that balance.

“My mom would wake up early every Saturday morning to bring me to my group lessons, and my dad would always leave work early to come see me compete or perform. I was the main contributor to the wear and tear on the family car, with all the trips to the rink for practice and the countless road trips to competitions. Sacrifices were very often made on my parents’ part so I could stick with the sport that was bringing me so much happiness,” Briana adds.

Thanks to her parents’ commitment as well as Briana’s own dedication, she is an 11-year ISI member who has participated in an impressive seven World Recreational Team Championships, coast to coast, and dozens of other local and regional events while maintaining a stellar record in the classroom and as a busy volunteer.

“As a skater, Briana gives 100 percent every time she steps onto the ice,” says Lisa Hasgrove, Briana’s under-study program director at the Edward J. Murray Memorial Skating Center in Yonkers, N.Y. “As a competitor, she is strong and determined. As a volunteer, she is caring and reliable. She has spent countless hours, year after year, helping to improve our skating school. Briana has also made our entire community proud with her accomplishments outside the rink.”

As a student at Dominican Academy, Briana received awards in a full spectrum of academic subjects, including

English, geometry, biology, literature, algebra and trigonometry, chemistry, history, Spanish, religion, physics and pre-calculus.

Her efforts have been rewarded with acceptance into Yale University, where she is majoring in political science with a focus on international relations.

## Theresa Semmelmayer



Skating, says Theresa Semmelmayer, has given her strength, agility, flexibility, endurance, athleticism and a strong work ethic. It was the endurance she gained through skating that inspired her to run high school cross-country and contribute to her team’s district, sectional and state performances.

Skating also has promoted Theresa’s healthy lifestyle, energy, artistic expression, sportsmanship and volunteer spirit. But most of all, she notes, it has broadened her circle of friends.

“My world is so immense because I skate,” Theresa says. “I have been all over the nation competing, from Colorado to Connecticut, meeting many skaters and experiencing new things. My favorite thing, by far, about skating is sharing it with others. I love teaching tots how to skate, volunteering at the ice rink with friends and performing in front of an audience in a show or competition.”

Theresa is a Freestyle 9 skater with her sights set on Freestyle 10.

“I have been coaching Theresa for 10 years now, and I know that wherever life takes her she will be successful. She has become confident off the ice and one of the best performers on the ice that our skating school has known,” says Pam Forster, Theresa’s coach at St. Peters Rec-Plex in St. Peters, Mo. “She has always been the most involved skater in our rink’s program, no matter the events. She is always there to lend a helping hand and she is a great role model.”

Theresa graduated second in her class of 483 from Francis Howell Central High School in nearby St. Charles, with a grade point average of 4.81 on a 4.0 (weighted) scale. She is majoring in mechanical engineering at St. Louis University.

“I have taken what I learned from skating about accepting and applying criticism and have used it in my academics, my social interactions — and beyond,” says Theresa. “I consider it my responsibility as a high-level ISI skater to provide an example of hard work and sportsmanship. I believe the joy of skating should be shared with all I encounter.”

**Editor’s note: Applications for 2010 scholarships are due March 1. Please see page 14 for more information.**



# Figure Skating Store

Tel. 818-785-2002



*Zuca Bags starting 124.99 with Free Shipping*



*Figure Skating Dresses  
Over 400 styles available  
in stock. Custom and crystal  
designs available.*

*Best Prices on Riedell, Graf and Jackson Skates  
Blades in Stock: MK, John Willson, Ultima, Paramount*

*Clubs and Precision Team Special Discounts: please call to inquire to set up  
your club with special pricing.*

## **Beginner Package - \$59.00 / \$69.00**

*Riedell 10/110 Figure Skates - \$49/\$59 depending on the size*

*Skate Guards - \$5.00*

*Soft Guards - \$5.00*

*+ 10% off any apparel/accessories*

*Free Shipping*

*pricing is valid only with this offer & only by phone must mention ad.*

## **Early Holiday Special - \$100/\$104.99**

*Jackson Mystique Figure Skates - \$79.99/\$84.99 depending on the size*

*Skate Guards - \$5*

*Soft Guards - \$5*

*Tights 3310 - \$10.00*

*+10% of any apparel/accessories*

*Free Shipping*

*pricing is valid only with this offer & only by phone must mention ad.*

# **[www.figureskatingstore.com](http://www.figureskatingstore.com)**

*14318 Calvert St. Van Nuys CA 91401*



## Stocking Stuffers for Skating Lovers

Our 50th Anniversary celebration continues with holiday savings on great gifts for parents, coaches and skating/competition directors.

**Special stock-up prices good on orders placed Oct. 1-Dec. 31, 2009.**

**Buy 1, Get 1 (of same item) Half-Price!**  
**Buy 3, Get 1 (of same item) FREE!**

### The ISI Test Standards DVD (\$20)

ALPHA –

A must-have for coaches and skaters! Demonstrates the required maneuvers in each of the ISI tests from Pre-Alpha through Freestyle 10.



### The ISI Handbook (2010) (\$25)

**NEW!  
Combined  
Edition!**

#### First section includes:

- Invaluable reference of detailed test requirement descriptions (including new Open Freestyle)
- Competition performance rules for individual, partner and team events
- Special Skater information
- Sample dance step and program diagrams

#### Second section includes:

- Competition performance rules for individual, partner and team events
- National event descriptions
- Membership and eligibility requirements
- Uncaptured moves glossary
- Competition essentials

#### Third section includes:

- Judge certification information
- Referee responsibilities
- Judging notes and terms
- Scoring tips and penalties
- Handy reference charts

**To order, go to [www.skateisi.org](http://www.skateisi.org)  
(Skaters' and Coaches' pages)  
or call (972) 735-8800**



Special thanks to the following recent contributors whose generosity makes the Foundation's scholarship program possible. To make a tax-deductible donation, please visit [skateisi.org](http://skateisi.org) and click on the Education Foundation tab on the toolbar.

### 2009 Keystone State Games

Barbara Ann Fitzgerald (book sales donation)  
Becky Jo Goldyn  
De Greenberg  
Scott McCoy  
SJR Charitable Foundation  
St. Peters Figure Skating Association  
Kristen Vanorski  
Richard Zamboni

### 5-YEAR PLEDGES

Donald Bartelson  
Craig Cichy  
Larry & Lorraine Fies  
FMC Ice Sports  
Karen Gibbons  
ISI District 1  
ISI District 8  
MIRMA  
Riedell Skate Co.  
Burt & Judith Sniffen  
Dr. Ruthanne Taylor  
Barbara Wietecter  
Wonderland of Ice  
Zamboni Company

### MEMORIAL DONATIONS

#### Boyd Wietecter

Jean Albrightson  
Patricia Alford  
Heather Aseltine  
Douglas & Stephanie Bay  
Thomas & Geraldine Blades  
Ann Boston  
Dorothy Burnkemper  
Craig Cichy  
Jack & Gloria Coates  
Anne & Dick Conaway  
Jimmy & Denise Cox  
Clark & Shirley Dickenscheidt  
Sydney & Matt Dorigi  
Colleen Eggemeyer  
Patti & Mike Feeney  
Lawrence & Lorraine Fies  
Friends of South County Skaters  
Dean & Judith Gould  
Renee & David Gould  
De Greenberg  
Ontie Griebel  
Francine & Russell Haefner



Mike & Donna Harvey  
 Ann, Kaitlyn & Bryce Hassall  
 Bob & Katy Hayden  
 Georgia & Edward Heichelbech  
 Hixon Middle School  
 Ice Skating Institute  
 Ralph & Sue Kendrick  
 Shawn & Lynn Kezar  
 Donald & Rose Kollmorgen  
 Jerome & Marcella Krieg  
 Mary Ann Kuechler  
 Leisure Solutions Inc.  
 Shirley & Lou Lunte  
 George & Betty Mabie  
 Susan Torrillo Masi  
 Gerald & Janet McClain  
 Elizabeth & Wilbur McGuire  
 Mehlville Optimist Club  
 Robert & Veda Merry  
 Charles & Mary Ann Mikusch  
 MIRMA  
 Victoria & Patrick O'Neill  
 Professional Skaters Association  
 Dale & Kathy Reifschneider  
 Harry & Nancy Riggs  
 Onti & Morris Rosen  
 Michael Ryan  
 Raymond & Janis Rychlinski  
 Josephine Schwaebe  
 Janet & Robert Scott  
 Josephine Schwaebe  
 Donald & Janet (Birdwell) Springmeyer  
 Tommy & Ann Stanley  
 Linda & Bill Striler  
 Benjamin & Phyllis Ulrich  
 Karen Van Berkel  
 Janice Vaughn  
 Amy & Jason Wagenknecht  
 Mark & Lisa Weinstein  
 Jim & Kathy Widman  
 Barbara Wietecter  
 Virginia M. Wietecter  
 Charles & Lenise Wimborough  
 William & Karen Wines  
 Cora Wolf  
 Barbara Yackel  
 Richard Zamboni

### **Lyn Markowitz**

Stan & Diane Belliveau  
 Ice Skating Institute  
 Metropolitan Ice Rink

### **Louise Hoggan**

Ice Skating Institute

### **Robert Unger**

Jon Robinson  
 Raymond & Janis Rychlinski

# Are You a Skating Scholar?



*Emily Miller, 2008 scholarship recipient*

ISI members are well-rounded individuals who put as much energy into their life off the ice as they do on it. We believe that both educational and recreational pursuits are necessary to achieve a balanced life.

Each year, the ISIA Education Foundation awards scholarships to ISI skaters who have demonstrated a commitment to academics and service. The application process is open to students in their senior year of high school through their junior year in an undergraduate program. However, most recipients began their qualification process during their middle-school years. Start your four-step process of qualification today!

- 1** Maintain at least a 3.0 GPA.
- 2** Participate in a variety of school and community activities. Keep detailed records, including frequency of participation.
- 3** Continue to test and compete in the ISI program, especially during the two years prior to application. Keep good records of all skating activity.
- 4** Prior to application, complete 120 hours of verified service, of which at least 60 must be in association with an ISI member facility. This information must be recorded on the Service Hours Verification Form, which is part of the scholarship application available at [skateisi.org](http://skateisi.org).

**Application deadline is  
March 1**

For more information or to apply, go to [skateisi.org](http://skateisi.org) or call (972) 735-8800





# 5th Annual ISI Holiday



Aimee Erickson



Alicia Andrews



Ashby Amory



Bailey C



Cassandra Munoz



Cheyenne McGuin



Emily Martorella



Gabrielle



Kelly Harrington



Kelsey Barnes



Kyle Berglund



St. Louis



Makayla Murdaugh



Paige Norberg



# Card Creativity Contest

VIEW ONLINE AT [SKATEISI.ORG](http://SKATEISI.ORG)



Arpenter



Carly Phoon



Carolina Munoz



Carrie Ackley



Gallant



Ginger Freeman



Hannah Warner



Kathryn Fazzi



Synergy



Samantha Tullis



Rikki Samuels



Kylee Kinsman



Rachel Schneider



Reagan Flewelling



# ISI SYNCHRONIZED CHAMPIONSHIPS



**March 26-28**

Miami University • Oxford, OH

Entry Deadline: Jan. 15

## ***Synchro Skaters Are Headed in the Right Direction!***

All signs point to the state-of-the-art Goggin Ice Center for the 2010 ISI Synchronized Skating Championships. Located on one of the most beautiful college campuses in the nation, 200-year-old Miami University, Goggin is home to the national champion RedHawk synchronized skating teams. If you love synchronized skating, you'll love this event and this arena!



### **FOR MORE INFORMATION**

[skateisi.org](http://skateisi.org)

[ice.muohio.edu](http://ice.muohio.edu)

*Schedule and venue subject to change.*

**2010 ISI NATIONAL SKATING EVENTS**



# High-Level Tests

*Congratulations to the following ISI skaters, who recently passed high-level Freestyle and Dance tests:*

## Freestyle 8

**Gemma Carter**

Portland Ice Arena

**Jessica Christy**

Minneapolis/Augsburg Arena

**Angela Como**

Oakton Ice Arena

**Alex Damerell**

Owens Recreation Center

**Caroline Feller**

Ice Chalet

**Kerianne Fernandez**

Ice Sports Forum

**Natalie Garvey**

Parade Figure Skating Club

**Emily Goodnow**

Nashoba Valley Olympia

**Caroline Gordon**

Golden Blades Skating School

**Emily Harrison**

Oak Lawn Ice Arena

**Elizabeth Houle**

St. Peters Rec Plex

**Kayla Johnson**

St. Croix Valley

**Alexis MacDonald**

Nashoba Valley Olympia

**Marisa Marshalka**

Winterland Skating School

**Emily McNally**

Symmetrical Skating School

**Alina Milevska**

Symmetrical Skating School

**Meaghan Monaghan**

Portland Ice Arena

**Alexandra Moran**

Nashoba Valley Olympia

**Brianna Morton**

FMC Ice Sports Natick

**Diane Muting**

Oak Lawn Ice Arena

**Cierra Nelson**

Oakland Ice Center - Sharks Ice

**Catherine O'Connor**

White Bear Lake Sports Center

**Sophia Salmanpour**

Roseville Skating Center

**Courtney Sayyae**

Southgate Civic Center

**Rachel Spitz**

Winterland Skating School

**Amy Sterling**

Franklin Blades Skating School

## Freestyle 9

**Daniel Gore**

Northbrook Sports Center

**Daniel Kulenkamp**

White Bear Lake Sports Center

**Bella Martinez**

Skatetown

## Dance 8-9-10

**Megan Brown**

Nazareth Ice Oasis

**Alice Ho**

Sharks Ice at San Jose

**Mary Panyon**

Nazareth Ice Oasis

**Peter Sasmore**

Nazareth Ice Oasis

**Benjamin Westenberger**


Sharks Ice at San Jose

**Skatetape.com**

**When it comes to figure skating videos we have it all.**

Everything from Henie to Hughes and more.  
Official 2002 & 2006 Olympic videos available now - 2010 Olympics available March 2010.

800-872-1996 • [www.skatetape.com](http://www.skatetape.com)



**ICE SKATING WITHOUT THE ICE**

Can be used on any smooth surface indoors or out

Behaves like an ice skate blade

**THE PIC SKATE**

**THE PIC SKATE - The most responsive inline skate EVER!**

**[www.picskate.com](http://www.picskate.com)**

# 5 X 10 = 50

(5 skaters passing ISI Dance 10 equals a great way to celebrate ISI's 50th anniversary!)

by Lori Fairchild

What better tribute to ISI's 50th anniversary celebration than to have five skaters make ISI history by passing the Dance 10 test — all on the same day! Alice Ho, Benjamin Westenberger, Mary Panyan, Peter Sasmore and Megan Brown passed the test in July during the 2009 ISI World Recreational Team Championships in San Jose, Calif., and were invited to perform in the ISIA Education Foundation Benefit On Ice at the end of the week. Only seven other ISI members have previously passed the demanding Dance 10 test.

While all five achieved the same successful test result, each arrived at this figure skating skills milestone via a different path.

Nazareth Ice Oasis in Redwood City, Calif. is the home rink for three of the five Dance 10 skaters. Peter Sasmore, 47, is a professional skater who coached and partnered with both Mary Panyan, 61, and Megan Brown, 24, for the Dance 10 test. That means he literally tested three times in just a few days!

Peter began ice skating at age 3 and ice dancing at 11, thanks to the interest and encouragement of his

German mother. At 6-foot-4, Peter says that learning and adapting to a wide variety of partner sizes, frames and skill levels is his biggest ice dancing challenge. "Try it, you'll like it — and you will receive a huge benefit in your singles," says the ice dance and free dance gold medalist and world championship choreographer. "It's like learning a different dialect of the same language!"

Mary Panyan, a community college computer science instructor, was born with ice skating in her blood — her parents had met during World War II at Queens Ice Rink in London. A skater since age 4, Mary was thrilled to be able to skate the Westminster Waltz at the Benefit On Ice with her 98-year-old mother in the audience. Mary met her own husband on the ice, and together they have danced in both ISI competitions and U.S. Figure Skating Adult Nationals.

"For a young person who is already skating, there simply is no reason not to take up ice dancing," she says. "And a skater beginning as an adult will find that ice dancing becomes a rewarding experience very early and is much less injury-prone than free skating."



ISIA Education  
FOUNDATION

## Support Those Who Support the ISI Mission!

The ISIA Education Foundation is proud to welcome **U.S. Icewear** as a fundraising partner. When you order tights from U.S. Icewear, the company **will donate 50 percent of the suggested retail price** to the ISIA Education Foundation in support of its scholarship program.

U.S. Icewear serves ISI members with superb quality, reasonable prices and, with this partnership, generous support of the ISIA Education Foundation.

**For more information and to order your U.S. Icewear tights, go to [skateisi.org](http://skateisi.org) and select the skaters' page.**



Peter's other Dance 10 partner, Megan Brown, is a substitute teacher and a coach at Nazareth. She started ice dancing 10 years ago as a teenager, originally to help with synchronized skating. "I soon realized that I wanted to make ice dance my priority," she recalls. "It allows me to combine both my technical and creative sides, and it is something that I will be able to continue doing throughout my life."

Alice Ho and Benjamin Westenberger, both 26, became ice dancing partners while coaching at Sharks Ice at San Jose. Alice began ice dancing in college and became the intercollegiate junior and senior dance champion while competing for the University of California, Berkeley.

"I like working with a partner," says Alice. "It's more exciting and challenging that way."

Benjamin, who began skating at age 4, started ice dancing at 13 when a girl at his arena in San Diego needed a partner. He recently returned to competitive skating following an injury and surgery, and has represented the United States at seven national championships and several international competitions. He is now training in and representing Canada.

"Ice dance is all about technique, edge quality, timing and the way the body is able to express the music," Benjamin notes. "I would encourage any skater to try ice dance. It's both physically and mentally demanding, and allows the skater to explore their edge work and creativity."

Want to learn more about ice dancing? Turn the page!



ISI's newest Dance 10 skaters, from left: Alice Ho, Benjamin Westenberger, Mary Panyan, Peter Sasmore and Megan Brown

**JOIN US FOR**

**THE 41ST ANNUAL**

**ROBERT UNGER**

**SKATING COMPETITION**

**APRIL 9-11, 2010**

**ICE CHALET**

**KNOXVILLE TN**

865-588-1858

icechalet@bellsouth.net

www.chaleticerinks.com/competition.htm

**ENDORSED BY THE ICE SKATING INSTITUTE**

**Ice Light Productions**

Designer & Manufacturer of Fine Skating Accessories

**Say Goodbye To Cold Feet**

**Take The Edge Off The Cold**

**BOOT GLOVES**

- Keep feet warm
- Extend skate boot life
- Protect boots from moisture & wear
- Add support to broken down skates
- Keep laces from slipping and secure the boot fit
- Attractive stylish design

P.O. Box 893  
Seal Beach, CA 90740

Call Toll Free 1-877-300-8335  
Fax: 1-562-431-0223

bootgloves@icelight.biz  
www.icelight.biz



**by Randy Winship**

*ISI Director of Skating  
Programs & Events*

# Go Places with ISI in 2010

**G**et a map, mark your route and make your plans for our 2010 national events, scheduled throughout the year, from coast to coast (see inside back cover). ISI skaters are really going to some cool places in 2010, and you're sure to find a national event not far from home.

As our exciting 50th anniversary year draws to a close, we look forward to the special celebrations we have in store for 2010. The **25th Annual ISI Winter Classic** will be held Feb. 12-14 at Anaheim ICE and the newly renovated Westminster ICE facilities in Anaheim, Calif. The last time Winter Classic was in Anaheim, we had more than 1,800 skaters, making it our largest Winter Classic ever. Help us make history again, by surpassing the previous record!

Entries will be processed on a first-come, first-served basis, so don't delay — get your entry in now! We look forward to seeing you and your skating friends for a "sweet" Valentine weekend of skating.

Our **Synchronized Championships** event will be another "first" at the Goggin Ice Center in Oxford, Ohio, home of the world-famous Miami University synchro teams.

Then we're off to Marlboro, Mass. in July for a special celebration — the **30th Annual ISI World Recreational Team Championships**. With five ice surfaces under one roof, this location is always a hit with ISI skaters. Include a summer trip to Boston for this fun and historic competition.

**Adult Champs** — popular for our skaters age 21 and over — heads back to fabulous Las Vegas in October. We've changed the dates to a holiday weekend to allow even more fun in the City of Lights. The new event location will be the twin sheets at the Las Vegas Ice Center, located close to the Strip.

To end our competition year, how about a pre-holiday stop along Chicago's North Shore? We'll hit the Windy City for our **Artistic Challenge** at the Northbrook Sports Center. Featuring many non-technical events, it's a great way to show off your entertaining and creative side of skating.

There's truly something for everyone on our 2010 national event tour, so grab your friends, pack your skates and go places with ISI!



## FOCUS ON *Ice Dancing*

We highlighted Couples & Pairs events in the last issue, but what is the other popular partner event at many ISI competitions? Ice dancing!

Many people think the effortless and flowing ice dancing events are difficult for beginner skaters. *Not true!* Did you know that the Dance 1 and Dance 2 requirements for both testing and competition events require only forward skating? If you are doing forward strokes and glides on ice, then you can learn to dance, too.

Ice Dancing Tests 1-10 and competition events require skaters to follow a specific set pattern of steps, turns and edges around the rink to a fixed tempo of dance music. Ice

Dancing 1-10 tests can be taken solo or with a partner. All skaters are required to pass the corresponding ice dancing test(s) before participating in competition events. (Pre-Alpha through Delta tests are not required.)

Ice dancing events are divided into four categories for ISI competitions:

- **Solo** - One skater performing the set pattern steps alone
- **Similar** - Two skaters of the same gender performing together
- **Mixed** - One male and one female performing together
- **Pro Partner** - In this newest dance event, students can partner with a professional instructor to compete in ISI dance events. This is great for both adult and younger skaters.



The best thing about ice dancing is that you don't have to master any jumps or spins. Many people like the added security of not having to be airborne. There is also no program to prepare as all skaters follow the same set dance patterns for competition events.

Ice dancing provides a chance for skaters to improve edge control, posture, balance and rhythm while skating solo or with a partner. These qualities will help to improve your free-style programs along with Artistic, Spotlight and Interpretive event programs.

The set pattern dances are a step-by-step progression from easy to more difficult levels. (See the new *ISI Handbook* for specific dance test requirements.)

**Event judging criteria include:** correctness, interpretation, pattern, position, posture, timing and unison (if with a partner).

## Free Dance 1-10

If the set pattern dances aren't your thing but you still want to dance on ice, check out the new Free Dance 1-10 tests. All skaters must pass the corresponding Free Dance 1-10 test(s) before participating in the Free Dance competition events. Each test level requires a dance program (for two skaters) with specific maneuvers that include dance step sequences along with some other maneuvers, spins and lifts from freestyle and pair tests. There are some restrictions for holds and positions, but the required maneuvers and steps are woven into an entertaining routine to music of the skaters' own design.

## ISI Polar Classic Competition



**Jan. 9-10, 2010**

**Entry deadline:  
Saturday, Dec. 19**

**Download the  
competition packet at  
HFPARKS.COM**

**Homewood-Flossmoor Ice Arena  
777 Kedzie, Flossmoor, IL  
708-957-0100**

## Make Your Own Ice Rink with **NICE RINK®**



*A pristine sheet  
of ice  
that's all yours...*

*Everything you need  
to make your own!*

*NiceRink®  
plastic boards  
& brackets*

**888-NiceRink (642-3746)**

Any size – details online at [www.NiceRink.com/isi](http://www.NiceRink.com/isi)

**New!**  
**Lace - Bite Pads with Sleeve**  
from SkatingSafe  
**Less Expensive and Most Convenient  
Pad on the market!**



**(2 X Lace - Bite Pad & 2 X Retention Sleeves)  
Item # HP 8004**

*SkatingSafe, Inc.*

Call (888) 299-2553 or visit [www.SkatingSafe.com](http://www.SkatingSafe.com)

## Jump On It!

Use the letters bouncing on the trampoline to complete the names of these ice skating jumps!

L	__	O	__
__	UT	__	__
F	__	I	__
__	A	__	LEY
W	__	L	__
			Z



## Wrap Up Another Year!

Here's a fun scrapbook activity!

Fill in the blanks to save your 2009 ice skating memories.

*My name:* \_\_\_\_\_ *My age:* \_\_\_\_\_

*My instructor/coach:* \_\_\_\_\_ *My current ISI level:* \_\_\_\_\_

*My favorite skating move:* \_\_\_\_\_

*When I skate, I like to wear:* \_\_\_\_\_

*My favorite song to skate to:* \_\_\_\_\_

*My favorite ice skating memory from 2009:* \_\_\_\_\_

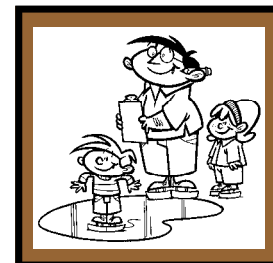
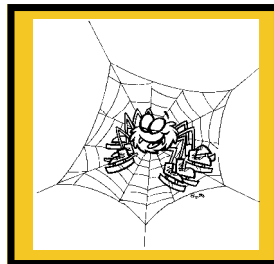
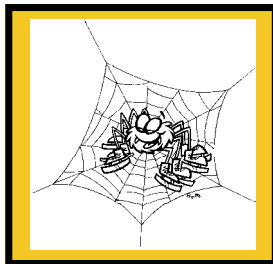
*My skating goals for 2010:* \_\_\_\_\_





# weSKATE Memory Game

Ice skaters must have good memories, and here's a fun way to test yours! Carefully cut out the squares below (or make a copy of this page if you don't want to cut up your magazine). Place the squares face-down on a flat surface and mix them up well. Then, with another player, take turns turning over two at a time. When you get a match, you get another turn. The player who finds the most matches is the winner!



# ISI WORLD RECREATIONAL TEAM CHAMPIONSHIPS



**July 26-31**

New England Sports Center • Marlboro, MA  
Entry & Test Deadline: May 1

## ***Discover the Exciting Worlds of ISI!***

Navigate northeastward for the 30th Annual ISI World Championships. By popular demand, ISI returns to the two-story New England Sports Center for the largest annual recreational ice skating competition on the planet. The spacious center offers everything needed for a wonderful Worlds: five rinks under one roof, a full-service restaurant, plentiful parking and a perfect tourist location near Boston. Plans are in the works for a harbor cruise, always a hit with fun-loving Worlds competitors.



### **FOR MORE INFORMATION**

skateisi.org  
bostonusa.com  
www.nes.com

*Schedule and venue subject to change.*



**2010 ISI NATIONAL SKATING EVENTS**



# UNDERSTANDING EVENT JUDGING

**Q** My daughter has chosen a popular song she'd like to skate to for her next Freestyle 2 competition program. She'd like to enter the technical event, but is she allowed to skate to something with vocals in that category? Her coach also said she will have to cut it a little shorter because the part she'd like to skate to is now 1:45. Is this really necessary? This piece sounds wonderful just as it is.

**A** Yes, vocal music is fine for any ISI event program, but you should still check with your daughter's coach to make sure that music will be appropriate for the program choreography. The duration time for that program is 1:30. The skater is allowed a leeway of 10 seconds over this time, however it is always a good idea not to cut it too close, to allow for differences in the audio equipment. There is a penalty for exceeding the leeway, but no penalty for being under.

**Q** We were very surprised recently to see that a skater who fell during her program actually won the event! Isn't there a major point deduction for this in ISI competition?

**A** No, there is no penalty for falling in any ISI competition event. A skater who falls while performing a required maneuver has three attempts to successfully complete the maneuver in the program, and only the best attempt is scored. If the fall is on a non-required maneuver, judges could give a lower score under "General Overall" or "Judge Appeal" if they think the fall disrupted the flow of the overall program.

**Q** At the recent World Championships, I noticed that my daughter did a lot more difficult jumps and spins in her Light Entertainment routine than the girl who won. She seemed to just do a lot of "dancing on ice." Why did that happen?

**A** In the Spotlight category, there is no score given for technical maneuvers. Those programs are judged on the entertainment value of the performance, including: Costume and Prop, Music and Choreography, Originality, Duration and Judge Appeal (by all three judges).

**Q** I understand that figure skating is often subjective and based on opinionated judging, and for that reason, my daughter's coach and I both encourage her to compete against herself each time, trying to improve with each performance. But when there are three judges watching her sit spin, for example, isn't it true that one may prefer a faster spin, while one may like it slower and better controlled, and yet another might give a higher score for a lower position? How is she supposed to please everyone on the panel?

**A** Teaching your daughter to do the best she can and compete against herself is a healthy and commendable approach to it. She is bound to be a winner more often than not, and she

is in complete control of that! If you are talking about the sit spin receiving a score in a technical Freestyle 4 event, as with most ISI competition events, each judge has different criteria on his/her judge sheet — and only one judge is scoring the sit spin to compare her sit spin performance with the other skaters in that event group. She will not get three varied marks on that one maneuver. The required maneuvers are divided between the three judges, as are the overall performance scores for Correctness, Pattern, Posture, Duration, etc. All three judges give a score for "General Overall," so that category will carry the most impact on the final placement. This is one place where they are able to give their opinion of the entire performance, all things considered.

**Q** My daughter's synchronized team has 24 skaters on it! Wouldn't it be easier for the skaters, and result in higher scores, if the coach were to split it up into three separate teams?

**A** Yes, it would be easier, but that wouldn't necessarily result in better scores. It is certainly harder to stay together in a group of 24 than a group of eight, and the judges take into consideration the size of the team. They are looking at things like the required synchronized elements — Line, Circle, Block, Wheel and Intersection — along with Unison, Correctness or Technical Merit, Transitions, Rhythm, Team Presentation, Duration and General Overall. While all of the teams do basically the same maneuvers in their choreography, there are many more exciting variations that can be done with more skaters!

**Q** Our youth synchronized team recently competed against a team that I know had two teenagers on it. I believe these girls are 14 or 15 years old. Don't they have to be on a teen team?

**A** All synchronized teams are registered by age category based on a majority age of the skaters. To compete in the youth category, the majority of skaters must be ages 9-11. Younger skaters can be rounded up until you have a majority, but older skaters may not be rounded down, so you will sometimes see these older skaters on a younger team, especially if there is no other team available for them.

**PARENTS:** Tell us what you want to know about ISI skating and events! Send your questions to [editor@skateisi.org](mailto:editor@skateisi.org).

## competitions

### december



**4-6** Fort Myers FL  
Fort Myers Skatium  
ISI Artistic Challenge

**4-6** Taylor MI  
Taylor Sportsplex  
TSX Winter Extravaganza

**4-6** White Bear Lake MN  
White Bear Lake Sports Center  
White Bear Lake Holiday Open

**5-6** Burbank CA  
Pickwick Ice Center  
ISI Holiday Competition

**12** Walla Walla WA  
YWCA Ice Chalet  
3rd Annual District 13 Hockey Skills Champs

**30** Rolling Meadows IL  
Rolling Meadows Park District  
Frostfest

### january

**9** Plymouth MN  
Plymouth Ice Center  
Blizzard Blast

**9-10** Brockton MA  
FMC - Asiaf Arena  
Brockton Blizzard

**14-17** Mamaroneck NY  
Riverdale Ice  
Lake Placid ISI Championships

**15-17** Montgomery AL  
K Lynn Skating School  
1st Annual Competition

**16-17** Centennial CO  
South Suburban Family Sports Center  
7th Annual ISI Competition

**22-24** Williamstown MA  
Lansing Chapman Skating Rink  
Bay State Games

**24** Franklin Park IL  
Franklin Park Ice Arena  
KICKLine Synchronized Skating Competition

### february

**5-7** Glenview IL  
Glenview Ice Center  
February Freeze

**5-7** Eugene OR  
Lane Events Center-ICE  
Love to Skate

**5-8** St. Louis MO  
Wayne C. Kennedy Recreation Complex  
21st Annual Sweetheart Open



**12-14** Anaheim CA  
Anaheim ICE  
ISI Winter Classic

**12-14** Oxford OH  
Goggin Ice Center  
2010 ISI Miami Open Team Competition

**12-14** Blaine MN  
Schwan Super Rink  
Frosty Blades 2010

**13-14** Plano TX  
Dr Pepper StarCenter  
ISI Love to Skate 2010

**20** Mansfield MA  
Golden Blades Skating School  
9th Annual ISI Team Competition

**20-21** Nashville TN  
Centennial Sportsplex  
25th Annual ISI Invitational

**27-28** Oak Lawn IL  
Oak Lawn Ice Arena  
Reach for the Stars

### march

**12-14** Park Ridge IL  
Oakton Ice Arena  
Ice Breaker Classic



**26-28** Oxford OH  
Miami University  
ISI Synchronized Skating Championships

### april

**9-11** Knoxville TN  
Ice Chalet  
41st Annual Robert Unger Competition

**24-25** Johnstown PA  
Planet Ice  
Spring Challenge Championship

**24-25** Franklin Park IL  
Franklin Park Ice Arena  
Spring Fever Competition

### may

**1-2** El Segundo CA  
Toyota Sports Center  
2010 Spring Fling Open Competition

**22** Wellesley MA  
Babson College Skating School  
Babson Blast

### july



**26-31** Marlborough MA  
New England Sports Center  
30th Annual ISI World Recreational Team Championships

### october



**8-10** Las Vegas NV  
ISI Adult Championships  
Las Vegas Ice Center

## shows & exhibitions

### december

**thru Dec. 19** Dallas TX  
Galleria Ice Skating Center  
Annual Tree Lighting Ceremonies

**thru Jan. 10** San Jose CA  
Sharks Ice at San Jose  
Holiday Exhibitions



**Ongoing** **Bloomington IL**  
Pepsi Ice Center  
Pepsi Pops

**Ongoing** **Bloomington IL**  
Pepsi Ice Center  
Red White & Blades

**2-3** **Honolulu HI**  
Ice Palace  
Gift to You

**4** **Geneva IL**  
The Skate School @ Fox Valley  
Holiday Exhibition

**5** **Newark OH**  
Lou & Gib Reese Ice Arena  
2009 Holiday Exhibition

**5-6** **Franklin Park IL**  
Franklin Park Ice Arena  
2009 Holiday Recital

**5-6** **Pittsburgh PA**  
RMU Island Sports Center  
2009 Holiday Spectacular

**6** **Nashville TN**  
Centennial Sportsplex  
Annual Holiday Ice Show

**6** **Luverne MN**  
Blue Mound Figure Skaters  
Will Skate for Food

**8-12** **Knoxville TN**  
Ice Chalet  
22nd Annual Nutcracker on Ice

**11-12** **St. Peters MO**  
St. Peters Rec-Plex  
Winter Wonderland on Ice

**11-12** **Eugene OR**  
Lane Events Center-ICE  
Jungle Book

**11-13** **Evanston IL**  
Robert Crown Ice Center  
35th Anniversary Nutcracker on Ice

**12** **Panorama City CA**  
Valley Ice Center  
A Time For Families

**12** **Anaheim CA**  
Anaheim ICE  
15th Annual Holiday Spectacular

**12** **Dimondale MI**  
The Skate School @ The Summit  
Holiday Ice Show

**12** **Fort Myers FL**  
Fort Myers Skatium  
Christmas Memories - Holiday Ice Show

**12** **Stillwater MN**  
St. Croix Valley Rec Center  
Winter Exhibition

**12-13** **Indian Trail NC**  
Extreme Ice Center  
Skate a Gift

**13** **Pittsburgh PA**  
BladeRunners Ice Complex  
Holiday Skate

**13** **St. Louis MO**  
Wayne C. Kennedy Recreation Complex  
Holiday Celebration

**13** **Redwood City CA**  
Nazareth Ice Oasis  
The Nightmare Before Christmas

**13** **West Dundee IL**  
Leaf's Ice Centre  
Holiday Showcase

**13** **Oak Lawn IL**  
Oak Lawn Ice Arena  
Holly Day on Ice

**13** **Bensenville IL**  
Edge Ice Arenas  
Annual Holiday Exhibition

**18-19** **Simi Valley CA**  
Iceoplex Simi Valley  
Lion Kings on Ice

**19** **Arlington TX**  
ICE at The Parks  
Holiday in The Parks

**19** **Marlboro MA**  
FMC Ice Sports Marlboro  
Winter Carnival

**19** **Oakland CA**  
Oakland Ice Center - Sharks Ice  
Holiday Lights by the Bay

**19-20** **Richmond VA**  
Richmond Ice Zone  
2009 Holiday on Ice

**20** **Yonkers NY**  
E.J. Murray Memorial Skating Center  
Holiday Ice Show 2009

**20** **Johnstown PA**  
Planet Ice  
Season Spectacular/Spotlight on the Season

**20** **Orland Park IL**  
Arctic Ice Arena  
Arctic Wonderland 2009

**26** **San Jose CA**  
Sharks Ice at San Jose  
Bay Skates

## january

**2** **Bloomington IL**  
Pepsi Ice Center  
2010 Skating Month Kickoff

## february

**10** **Dimondale MI**  
The Skate School @ The Summit  
Spring Follies

**16 thru May 15** **Bloomington IL**  
Pepsi Ice Center  
Red White & Blades

**16 thru May 30** **Bloomington IL**  
Pepsi Ice Center  
Pepsi Pops

## march

**13-14** **St. Louis MO**  
Wayne C. Kennedy Recreation Complex  
Annual Ice Recital

**19-20** **Luverne MN**  
Blue Mound Figure Skaters  
Bedazzled on Ice

**20** **Laconia NH**  
Central New Hampshire Skating Academy  
Spring Show

## april

**16-17** **Carol Stream IL**  
Carol Stream Ice Rink  
Up Up and Away

**23-24** **Downers Grove IL**  
Downers Grove Ice Arena  
Up Up and Away

**23-25** **Park Ridge IL**  
Oakton Ice Arena  
Round-Up at the Oakton Corral

**24-25** **Stillwater MN**  
St. Croix Valley Rec Center  
10th Annual Ice Show

## may

**1** **Marlboro MA**  
FMC Ice Sports Marlboro  
Skating to the Movies

**1-2** **Cottage Grove MN**  
City of Cottage Grove Ice Arena  
Carnivals on Ice

**7** **Geneva IL**  
The Skate School @ Fox Valley  
Spring Ice Show

**7-9** **Northbrook IL**  
Northbrook Sports Center  
Northbrook-On-Ice 2010

**13-16** **Skokie IL**  
Skatium  
One Hit Wonders

**14** **Dimondale MI**  
The Skate School @ The Summit  
Spring Ice Show

**16** **Nashville TN**  
Centennial Sportsplex  
Annual Spring Ice Show

**18-19** **Skokie IL**  
Skatium  
Superstars on Ice

**21-23** **Glenview IL**  
Glenview Ice Center  
37th Annual Ice Show

**28-29** **Orland Park IL**  
Arctic Ice Arena  
Magical Mystery Ice Tour

2010

# Classified Advertising

**BOOK FOR YOUNG SKATERS** — *The Champion Behind The Champion*, GREAT BOOK for young skaters, parents, coaches. Follow LambieAnn's skating career to Nationals through a fun and educational story with charming, original illustrations. \$23.95 plus S&H. Call author direct for multiple orders at (440) 546-9152. Original skating-themed holiday cards, too. [www.BarbarAnn.com](http://www.BarbarAnn.com)



To place classified advertising, call Carol Jackson, advertising sales manager, at (972) 735-8800, fax to (972) 735-8815 or send e-mail to [cjackson@skateisi.org](mailto:cjackson@skateisi.org). The deadline for the next issue of *Recreational Ice Skating* is Jan. 25



## Statement of Ownership, Management and Circulation

1. Title of Publication: Recreational Ice Skating 2. Publication No.: USPS 361-570 3. Date of Filing: 9-28-09 4. Frequency of Issue: Quarterly 5. No. of Issues Published Annually: Four (4) 6. Annual Subscription Price: \$12. 7. Complete Mailing Address of Known Office of Publication: 6000 Custer Road, Bldg. 9, Plano, TX 75023 8. Complete Mailing Address of Headquarters or General Business Office of the Publisher: Ice Skating Institute, 6000 Custer Road, Bldg. 9, Plano, TX 75023 9. Full Names and Complete Mailing Address of Publisher, Editor and Managing Editor: Publisher, Ice Skating Institute, 6000 Custer Road, Bldg. 9, Plano, TX 75023; Editor, Lori Fairchild, 6000 Custer Road, Bldg. 9, Plano, TX 75023; Managing Editor, None. 10. Owner: Ice Skating Institute, 6000 Custer Road, Bldg. 9, Plano, TX 75023 11. Known Bondholders, Mortgagees, and Other Security Holders Owning or Holding 1 Percent or More of Total Amount of Bonds, Mortgages, or Other Securities: None 12. Tax Status: Has Not Changed During the Preceding 12 months 13. Publication Title: Recreational Ice Skating 14. Issue Date for Circulation Data: Nov. 1, 2008-Sept. 30, 2009 15. Extent and Nature of Circulation: A. Average No. Copies Each Issue During Preceding 12 Months (net press run): 34,200 Actual No. Copies of Single Issue Published Nearest to Filing Date: 33,800 B1. Average Paid and/or Requested Circulation Outside-County Mail Subscriptions: 33,747 Actual No. Copies of Single Issue Published Nearest to Filing Date: 33,452 B2. Average Paid or Requested Circulation In-County Subscriptions: 0. Actual No. of Copies of Single Issue Published Nearest to Filing Date: 0. B3. Average Sales Through Dealers and Carriers and other non-USPS Paid Distribution: 48. Actual No. of Copies of Single Issue Published Nearest to Filing Date: 54 B4. Average No. Copies of Other Classes Mailed Through the USPS: 62. Actual No. Copies of Other Classes Mailed Through the USPS: 44 C. Average Total Paid and/or Requested Circulation: 33,857 5. Actual No. Copies of Single Issue Published Nearest to Filing Date: 33,550 D1. Average Free Distribution by Mail Outside-County: 0. Actual No. Copies of Single Issue Published Nearest to Filing Date: 0 D2. Average and Actual No. Copies Free Distribution In-County: 0 D3. Average No. Copies Free Distribution Other Classes Mailed through USPS: 19. Actual No. Copies of Single Issue Published Nearest to Filing Date: 16 D4. Average Free Distribution Outside the Mail: 69. Actual No. Copies of Single Issue Published Nearest to Filing Date: 20 E. Average Total Free Distribution: 88. Actual No. Copies of Single Issue Published Nearest to Filing Date: 36 F. Average Total Distribution: 33,945. Actual No. of Copies of Single Issue Published Nearest to Filing Date: 33,586 G. Average Copies not Distributed: 255. Actual No. Copies of Single Issue Published Nearest to Filing Date: 214 H. Average Total: 34,200. Actual No. Copies of Single Issue Published Nearest to Filing Date: 33,800 I. Average Percent Paid and/or Requested Circulation: 99.74% Actual No. Copies of Single Issue Published Nearest to Filing Date: 99.892% 16. Publication of Statement of Ownership will be printed in the Winter 2009 issue of this publication. 17. I certify that all information furnished on this form is true and complete: (signed) Donna Crooks, Controller (date) 9/28/09



Every credit card sends you a statement.  
This card lets you make one.

Support the ISI with every purchase and turn your purchases into points.

- \$50 donation by the bank when you first use the card plus ongoing contributions.\*
- 0% Introductory APR on purchases and balance transfers for 6 months.†
- Earn points and bonus points at hundreds of participating online and neighborhood retailers.
- Redeem points for name-brand merchandise, event tickets, gift cards or travel reward options.
- No annual fee and no additional cost to you.
- Enhanced Visa Platinum benefits, including 24/7 Emergency Customer Service and 100% Fraud Protection, Purchase Security, Warranty Manager and much more.

**Special Bonus: Apply now and earn points for balance transfers.**

**1 point for each dollar you transfer.**

**The Ice Skating Institute**

Visa Platinum® Rewards Card



**Apply Today!**

[www.cardpartner.com/app/the-isi](http://www.cardpartner.com/app/the-isi)



The ISI Visa card program is operated by UMB Bank, N.A. All applications for the ISI Visa credit card accounts will be subject to UMB Bank N.A.'s approval, at its absolute discretion. Please visit [www.cardpartner.com](http://www.cardpartner.com) for further details of terms and conditions which apply to the ISI Visa card program. \*Donation made when card is used once within 90 days of issuance. †After this period a low variable APR will apply.



# ISI SKATERS ARE GOING PLACES in 2010



**Feb. 12-14**

Anaheim ICE - Anaheim, CA  
Entry & Test Deadline: Dec. 1



**March 26-28**

Miami University - Oxford, OH  
Entry Deadline: Jan. 15



**July 26-31**

New England Sports Center - Marlboro, MA  
Entry & Test Deadline: May 1



**Oct. 8-10**

Las Vegas Ice Center - Las Vegas, NV  
Entry & Test Deadline: Aug. 15



**Dec. 10-12**

Northbrook Sports Center - Northbrook, IL  
Entry & Test Deadline: Oct. 15



GO TO [WWW.SKATEISI.ORG](http://WWW.SKATEISI.ORG) FOR ENTRY  
FORMS AND ADDITIONAL EVENT DETAILS



**PERFORM  
SHOWS  
ANYWHERE!**

**PRACTICE  
SKATING  
ANYTIME!**

*Patent Pending interlocking  
design assures a smooth  
surface, large or small.*

**GLOBAL**  
synthetic ice

MANUFACTURER & DISTRIBUTOR OF SUPER-GLIDE PRODUCTS

**Call Today:**  
**(305) 218-2966**  
**GlobalSyntheticIce.com**



  
**SUPER-GLIDE**  
*Anywhere - Anytime - Any Size*

**ALL-WEATHER  
RINKS  
ANY SIZE!**