

# *recreational* **IceSkating**

Winter 2010

## **Worlds & Adult Champs Galleries**

*Up Close & Personal  
with Rachael Flatt*

ISI  
*1 Holiday  
Card  
Creations*

**Team  
Fundraising  
Tips**



*Hit the ice with our  
New Sport Collection!*

Fall Collection 2010



Wonderland



Fairytale

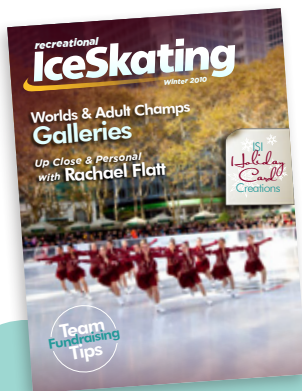


Year of The Tiger



Join the conversation!!

\*New collection available on 11/1/2010 at [zuca.com](http://zuca.com)



# what's inside

The Pond at Bryant Park, New York City  
Courtesy of Ice Rink Events

Recreational Ice Skating | Winter 2010/Vol. 35, Number 1

**Publisher**  
Ice Skating Institute

**Editor**  
Lori Fairchild

## Editorial Advisors

Peter Martell  
Randy Winship  
Sean Flynn  
Dawn Malone

**Print Production &  
Advertising/Sponsorship  
Manager**  
Carol Jackson

**Graphic Designer**  
Dallas Drotz

Recreational Ice Skating ISSN 0164-4106 (USPS 361-570) is published quarterly; Fall, Winter, Spring, and Summer; by the Ice Skating Institute, 6000 Custer Rd., Bldg. 9, Plano, TX 75023. Annual Subscription Rate is \$12.00 per year. Periodicals postage paid at Plano, TX, and at additional mailing offices. POSTMASTER: Send address changes to Recreational Ice Skating, 6000 Custer Rd., Bldg. 9, Plano, TX 75023. Printed in the U.S.A.

Address Subscription Requests to Recreational Ice Skating, 6000 Custer Rd., Bldg. 9, Plano, TX 75023. Extra copies are \$4.00 each (includes postage).

©2010 by the Ice Skating Institute. Reproduction in whole or in part is prohibited unless expressly authorized in writing by publisher. All rights reserved. Opinions expressed by contributors do not necessarily represent the views of the Ice Skating Institute, the publisher or the advertisers. Submissions of manuscripts, materials, photographs, and artwork are made at mailer's risk and must include self-addressed envelope with sufficient postage for return. No responsibility will be assumed for unsolicited materials. ISI reserves the right to edit material submitted for content and space consideration.

## ► features



Everyone's a Star in Benefit on Ice . . . . . 6

Up Close & Personal with Rachael Flatt . . 8

It Was a Wonderful,  
Wonderful Worlds! . . . . . 14

ISI Worlds Photo Gallery. . . . . 16

2010 ISI Holiday Card Contest. . . . . 20

Adult Champs Results  
& Photo Gallery. . . . . 22

ISI Is College-Bound! . . . . . 24



## ► departments

News & Notes . . . . . 4

ISIA Education Foundation Donation . . . 10

Competitors' Corner . . . . . 18

weSKATE Kids Adventures & Activities... 26

Calendar . . . . . 28





**ICE SKATING INSTITUTE**

6000 Custer Rd., Bldg. 9  
Plano, TX 75023  
Phone: (972) 735-8800  
Fax: (972) 735-8815  
e-mail: [isi@skateisi.org](mailto:isi@skateisi.org)  
[www.skateisi.org](http://www.skateisi.org)

**ISI INTERNATIONAL  
HEADQUARTERS**

**Executive Director**  
Peter Martell

**Director of Skating  
Programs & Events**  
Randy Winship

**Director of Management  
Programs & Services**  
Sean Flynn

**Director of Member Services**  
Dawn Malone

**Controller**

Donna Crooks

**Assistant Controller**

Elizabeth Kibat

**Membership Coordinator**

Mary Ann Mangano

**Print Production & Advertising/  
Sponsorship Manager**

Carol Jackson

**Information Services Coordinator**

Jeff Anderson

**Administrative Assistant**

Angela Tooley

**ISI OFFICERS**

President	Jim Hartnett
1st Vice President	Mike Paikin
2nd Vice President	Janice Forbes
Treasurer	Rob McBride
Secretary	Margy Bennett
Immediate Past President	Jim Lange

**DIRECTORS**

District 1	Tiesha Potvin-Coale
District 2	Robyn Bentley
District 3	Lisa Fedick
District 4	Christine Wilson Brinton
District 5	Larry LaBorde
District 6	Jodi Truel
District 7	Jamie Baringer
District 8	Susan D'Aquila
District 9	Bridgid LaMear
District 10	Jane Schaber
District 11	John Kanicka
District 12	Debbie Lane
District 13	Allison Miller
District 14	Paige Scott
District 15	Bert Blanchette
District 16	Cindy Solberg
District 18	Glyn Jones
Hockey	Dan Smith
Builders & Suppliers	Doug Peters
Instructors	David Santee
Commercial Facilities	Liz Mangelsdorf
Public/Not-for-Profit Facilities	Sara Bolan
Schools/Colleges/ Universities	Alane Swiderski
iAIM Chair	Kevin McCormack
PSA Representative	Gerry Lane
USFSA Representative	Homer Hagedorn
ISIA Asia Representative	Paul Wong
AMMA Representative	Trudy Ivory
MIAMA Representative	Dean Mulso
MIRMA Representative	Judy Sniffen
Education Foundation	Don Bartelson
Lifetime Honorary Member	Carol Zdziebko

# news & notes



## Jaclyn Guevarra Wins Holiday Card Contest

Jaclyn Guevarra's pen-and-pencil illustration of a happy ice skating family was selected as this year's official ISI holiday card design.

"I thought of drawing a family skating together

because a family who skates together and has fun brings them closer to each other," says 11-year-old Guevarra, a sixth-grader from San Francisco. "No matter what happens, through thick and thin, a family will always be a family. This brings joy to my heart, just like my family."

Jaclyn has been an ISI member since she began skating at the age of 3 in the Philippines. The next year, she was on the top team at the 2004 ISI World Recreational Team Championships, where she participated in the ISIA Education Foundation Benefit on Ice Show. She now skates at Yerba Buena Ice Skating Center in San Francisco, where she is working toward her ISI Freestyle 7 test. Her coach is her dad, Glen T. Guevarra.

"I enjoy going to ISI skating competitions, meeting new friends and learning new jumps and spins," Jaclyn says.

In addition to ice skating, Jaclyn enjoys dancing, playing the violin, playing video games and building her skating figurine and Hello Kitty collections. —**Lori Fairchild**



## Beyond Basket Bingo

Gone are the days when selling candy bars and hosting bake sales were enough to support our sports teams. With so many products and causes out there, skating teams must get creative with their fundraising. Our goal at the Bowie Ice Arena is to combine teambuilding activities with a valuable product or service to people outside of our skating families. Here are some of more successful ideas we have tried.

**Restaurants:** Many local restaurants will allow you to receive a percentage of the proceeds on an assigned weekday evening. The team will need to advertise that they will be receiving a portion of the proceeds that night. One of our local fast-food places gives us one Thursday a month when we receive 10 percent of the sales when the team name is mentioned. Try to pick an evening when the teams have ice time, so that the families can go together before or after practice.



The Bowie Ice Arena team held a variety of fun fundraisers to help them raise money for their trip to Worlds.



**Carwash:** The ice arena parking lot can be a great place to promote a carwash. The Zamboni pad is an ideal spot for doing the actual washing, because it is usually paved and you will have access to water.

**Basket Bingo:** This is a tried and true fundraiser. You will need a parent coordinator who has some experience with this type of event. The local American Legion usually has a Bingo machine and will rent the space to you at a very reasonable price, or perhaps even at no charge if a Legion member is involved. You will need to advertise, but there are many people who have no association with figure skating or hockey love Longaberger Baskets and Vera Wang purses and wallets. (Google "basket bingo" for the how-to's.)

**Tag sale:** If your facility has a large parking area, a yard or tag sale can be a very successful fundraiser. Rent spaces to skating families as well as others in the community, with the requirement that each family donate a portion of their proceeds back to the team. Most of the patrons will be from the community, giving both the arena and the teams some wonderful free advertising.

**Pancake breakfast:** Hosting a pancake breakfast is a fun way for skaters and their families to get together and raise money at the same time. The local Applebee's allowed us to "take over" the restaurant one Sunday morning. The restaurant charges \$4-6 per person and provides pancakes and bacon. They bring in staff cooks, but the skaters and families are the servers and hosts. Coffee and tea are provided. The team assigns a ticket value and sells tickets to family members and friends. To make this event even more fun, you can host a party at the ice arena prior to the breakfast. At our party we decorated aprons and T-shirts to wear while working the fundraiser.

So let's get started making memories, building teams and raising money to help support the skaters. Don't forget your cameras; ISI wants to see what you are doing! —**Christine Wilson Brinton**

## Looking for a Pen Pal?

The ISI Pen Pal program is ready for your requests! Simply go to the skaters' page at [skateisi.org](http://skateisi.org) and click on the Pen Pal button.

If you wish only to have your name included on the Pen Pal list for others to choose from, register on the Be a Pen Pal page. If you would also like to select up to three pen pals to begin communicating with, fill out the form on the Pick a Pen Pal page. Pen pal requests cannot be processed without an ISI member number to verify membership and identity.

Please note: ISI does not provide a pen pal matching service. We simply forward your information to your pen pal choices so they can respond directly to you.

NOTE TO PARENTS: Pen pal information is verified within the ISI member database, however, communication between pen pals is NOT monitored by ISI. Questions? Send them to [editor@skateisi.org](mailto:editor@skateisi.org).



Festival Walk Glacier of Hong Kong won the Skate Asia 2010 team champion trophy.

## Skate Asia 2010 Attracts 562 Skaters

Skate Asia 2010 in August featured 562 skaters from 25 rink teams representing 11 countries, including three teams from the United States. The 2,275 entries required 105 hours over seven days on a single surface at the beautiful new World Ice Arena Hangzhou. Skaters ranged in age from 2 to 55 and in skill level from Tot to Freestyle 10. Festival Walk Glacier of Hong Kong claimed the team champion trophy.

Paul Tai Wai Wong, competition director and chief referee, put together a schedule that ran smoothly and on time every day. With assistance from Alex Yeung and Indy Wong, there were frequently three separate groups of skaters competing in front of three judging panels. This format, initiated by Randy Winship, ensures that a large competition can be successfully held on one sheet of ice.

We were treated to amazing creativity and choreography, wonderful artistry and strong technical skating. I continue to marvel at the incredible costumes and the large number of male skaters always present at Skate Asia.

We also enjoyed two brilliant performances by young Nathan Chen, 2010 U.S. national Novice men's champion, during opening and final exhibitions.

Special thanks to Jackson Ultima and the Zamboni Company for generous sponsorships, and to Ted Wilson and his entire staff for making the Skate Asia 2010 experience unforgettable! —**Jean Albrightson**





# Everyone's a Star in Benefit on Ice

by Lisa Fedick, CAE

**E**nergy, anticipation, good karma, whatever you chose to call it, was present in abundance at the New England Sports Center in Marlborough, Mass. on the evening of July 30 for the 2010 ISIA Education Foundation Benefit on Ice Show. The show delivered one highlight after another, and every performer who was selected from the week of competitive events was a star! The skaters invited to participate represented 13 states as well as China.

The show opened with 16-year-old Victoria Chiappa of the Symmetrical Skating School in Middletown, Conn., singing the National Anthem. Not to be outdone by her multi-talented younger sibling, Chelsea Chiappa skated her Open Platinum Freestyle program. The program, which included four double jumps and a remarkable flying sit spin, was set to a piano piece that accented Chelsea's fluidity and grace. Chelsea, who is an active ISI member, is also the 2010 senior bronze medalist of the Hungarian Figure Skating Federation. Although all of the skaters were amazing, the show was "stolen" by the very young at heart. Donalda Horn of the Ice Sports Forum in Tampa, Fla., who is proud of every one of her 68 years, skated an Open Silver Freestyle program that would have been ambitious even for a skater a quarter of her age. The smile that flashed across her face when she finished the last flying camel was priceless, as was the resulting standing ovation. I also enjoyed the "Ladies Night" Ensemble performed by the ladies of Nashoba Valley. I'm not sure who was behind those canes and walkers, but those girls sure still had it going on!

Now it is time to talk about star power. The guest skater was none other than the 2010 U.S. national champion and Olympian Rachael Flatt. Rachael is a California girl whose skating career began in the ISI program at the Ice Chalet in La Jolla. She embodies all that the ISIA Education Foundation seeks to foster in our young adults. Her athletic skill and dedication speak for themselves through her accomplishments. Off the ice, Rachael recently graduated summa cum laude from Cheyenne Mountain High School. After many acceptances, she has chosen to attend Stanford University to study chemical engineering in the hope of pursuing a career in one of the biochemical fields.

Rachael's first program was the ultimate embodiment of her exuberant personality and raw talent. The sassy Big Band inspired-routine was highlighted by two seemingly effortless triples, a double Axel and a spiral sequence that showcased her amazing flexibility in a very creative way.

Before the first half of the show ended, Rachael, who had recently celebrated her 18th birthday, was serenaded by the 1,300-member audience.

Her second number showcased an entirely different facet of her depth as a performer. She thrilled the crowd with a deeply artistic and wonderfully innovative program, laced with just as many technical elements as her earlier performance.

Following the show, Rachael showed the grace of a true champion combined with the enthusiasm of a teenager as she posed for hundreds of photos and signed every piece of skating paraphernalia imaginable. She made sure that no one went home disappointed!

Delanie Honda of Minneapolis, one of the 2010 ISIA Education Foundation scholarship winners, was honored, and in turn treated us to a performance of her Freestyle 10 program. With the help of the Foundation, this amazing young woman will be entering Wheaton College in Norton, Mass., in the fall. The other 2010 scholarship recipient, Kerianne Fernandez of Tampa, Fla., was announced and recognized, but was unable to attend.

The two lucky "Skate with the Stars" raffle winners were Taylor Wheeler of Planet Ice in Johnstown, Pa., and Carla Brunini of the Tampa Bay Skating Academy Countryside in Clearwater, Fla. Taylor performed a flawless Freestyle 4 technical program, while Carla chose to get back into her Genie character from *Aladdin* with her Theme Spotlight 4. Both of these lucky young ladies showed that they, too, have great star power.

The 2010 show would not have been complete without the acknowledgement of the retirement of Jean Albrightson. ISI Executive Director Peter Martell recognized Jean and her 16 years of service as an Education Foundation board trustee.

Special thanks go out to Dan Riegelman of Riedell for his sponsorship of the Education Foundation raffle for two signed Zuca bags and a pair of custom boots (just like the ones Rachael wears).

The Benefit on Ice is the major fundraising event of the ISIA Education Foundation. The near-capacity crowd in Marlborough helps ensure the future endowment of the scholarship program. **ISI**



Olympian Rachael Flatt was the headliner at this year's Benefit on Ice Show at New England Sports Center.



unique. amazing. you.

*For the Love of Ice Skating...*  
*- Joshua Jewel -*

Visit our booths at the  
2011 U.S. Figure Skating Championships!

Jan 22-30 Greensboro N.C.



[www.joshuajewel.com](http://www.joshuajewel.com)





# Up Close & Personal with Rachael Flatt

**ISI:** *How did you get your start in ice skating?*

**Rachael:** When I was about 3 1/2 years old, my dad and I went to the local mall in San Diego to purchase a birthday present for one of my grandfathers. We came home with learn-to-skate lessons instead of the birthday gift! My first group lesson was about six weeks later, and I never looked back!

**ISI:** *When did you first realize that you wanted to skate competitively?*

**Rachael:** There wasn't an exact moment when I decided that I wanted to skate competitively. As I started progressing and testing up through ISI, I started entering competitions just to have fun, including in-house competitions at our rink as well as District 15 ISI competitions. Before long, I had

**ICE SKATING WITHOUT THE ICE**

Can be used on any smooth surface indoors or out

Behaves like an ice skate blade

**THE PIC SKATE**

**THE PIC SKATE - The most responsive inline skate EVER!**

**www.picskate.com**

## Give a Gift That Makes a Difference

When you're looking for a meaningful gift for any occasion — holiday, birthday, anniversary, retirement, appreciation — an ISIA Education Foundation donation in your gift recipient's name is sure to please. Donations may be made in any amount, are tax-deductible and support the Foundation's scholarship program. For more information, go to the Education Foundation tab at [www.skateisi.org](http://www.skateisi.org) or call (972) 735-8800.



switched over to and completed some of the USFS tests, beginning with the Pre-Preliminary level, and began competing in regional competitions when I was at the Juvenile level at age 9.

**ISI: Where have you skated and trained in the past?**

**Rachael:** I started out at University Towne Center Ice Chalet in San Diego and skated there until I was 8 years old. I had the chance to work with many different coaches in group classes over the years, but Tiffany Mayes was my first primary coach.

My family relocated to the Boulder, Colo. area when I was 8, and I skated at the Sun Microsystems Ice Center in Westminster, Colo., where I worked with Cindy Sullivan and Robi Chalmers. I also started commuting to Colorado Springs to train at the Colorado Springs World Arena and Ice Hall for singles (initially) and later pairs. After commuting three to four days a week for about three and a half years, we moved to Colorado Springs when Tom Zakrajsek became my primary coach.

**ISI: How did you maintain your course work and grades while training for and competing in the Olympics?**

**Rachael:** Well, sleep was definitely sacrificed in order to get everything done! I just made sure that my time was used efficiently and that I was very organized. Balancing four AP classes is rather difficult to begin with, but adding training at an elite level for skating made my life incredibly hectic. There was never a dull moment! I'm really grateful that my parents are so supportive since they helped me keep my schedule organized so that I could concentrate purely on skating and school.

**ISI: Why did you choose to continue in public school rather than do home schooling?**

**Rachael:** I value education a lot since it is what will stay with me for the rest of my life. Plus, my parents and I always say that in the term "student-athlete," student comes first for a reason. Although it was strenuous on my body and mind at times, going to a public high school was one of the best experiences; it helped me keep a balance in my life, and it also helped keep me grounded.

I was very fortunate that the staff at my high school was willing to work with my crazy schedule! I learned so much outside of things that were on the yearlong curriculum for a class, plus I had a fairly normal high school experience. I had great teachers and tough ones too, and school friends who were involved in other activities

## SkatingSafe, Inc.

**Pads for Figure Skaters to Help Make skating Safe!**

Skaters have long had to endure "pain" to pursue excellence in the beautiful, graceful and athletic art of figure skating.

At SkatingSafe, we are dedicated, through the use of Clear Clouds™ and UltraCrash™ Pads, to help keep you safe from pain caused by new boots and the bumps and bruises caused by falls.

Imagine feeling so protected that you could lessen the distraction caused by the anticipation of a fall, reduce annoying pain caused by new boots and greatly improve figure skating presentation!

Many figure skaters looking for effective and attractive protection pads have found that Clear Clouds™ and UltraCrash™ are the solution!

Visit the web or call  
for our full line of Fall Protection and Pressure Relief Products.

**SkatingSafe, Inc.**  
(888) 299-2553 [www.SkatingSafe.com](http://www.SkatingSafe.com)

**Thin and Light Weight!**



**Nearly Invisible!**



**Protects Skaters of All Ages!**



**Clear Clouds Medical Grade Gel Pads Used Inside your Boots!**



**The First Kneepad Designed Especially for Figure Skaters!**



**No Flexibility Issues!**





## A Last-Minute Deduction That Makes a Difference

The ISIA Education Foundation offers individuals and groups a way to make a valuable difference in the educational future of ISI skaters, and at the same time, claim an end-of-year tax deduction.

Since 1989, the Foundation has awarded more than \$200,000 in academic scholarships to deserving "skating scholars" who have demonstrated excellence both on and off the ice.

The Foundation welcomes contributions in any amount, whether made periodically as part of an extended pledge or on a one-time basis. A contribution in honor or in memory of a loved one also makes a meaningful gift for any occasion.

For more information and to make a donation, go to [www.skateisiorg/foundation](http://www.skateisiorg/foundation).

## Donations

### **Guarantor**

Donald Bartelson

### **Sponsor**

FMC Ice Sports  
ISI District 8  
Riedell Skate Co.  
Wonderland of Ice  
Zamboni Company

### **Donor**

ISI District 1  
MIRMA

### **Supporter**

Barbara & Boyd Wietecter

### **Contributor**

Craig Cichy  
Larry & Lorraine Fies  
Karen Gibbons  
A. L. Morgan  
Burt & Judith Sniffen  
Jon Robinson

### **Friend**

Dmytro Overchuk  
Sport-O-Rama

like band, glee club, cross country, basketball, theater, volleyball, etc. I went to study groups for AP classes, school dances, homecoming, prom, pep rallies and school sporting events. So, outside of missing 10 to 12 weeks of school a year, I had a pretty typical high school experience and I wouldn't give that up for anything!

**ISI:** Tell us about your Olympic experience.

**Rachael:** The Olympics was the most amazing event in all respects. I not only performed the best I ever have in competition, but I had the time of my life. I met so many people from all around the world, on top of meeting some of the stars of the U.S. Olympic team, including Lindsey Vonn, Apollo Ohno and Shaun White. The Village was fantastic and everyone on the volunteer staff was so nice and helpful. The entire experience is something I will never forget.

**ISI:** How have you worked with your mentor, 1976 Olympic champion Dorothy Hamill, and how has she helped you in your skating career and your life?

**Rachael:** I have worked with Dorothy both on and off the ice. I had the honor of skating with her in a show late last year and training under her watchful eye at the 1980 rink in Lake Placid, as well as at my home training rink in Colorado. She helped me prepare mentally and physically for my first World Championship event in Los Angeles in 2009, which she attended, as well as the 2010 U.S. National Championship and the 2010 Olympic Games. She is such a positive role model that it is impossible not to look at her in awe. I can say she is a mentor, a role model, a teacher and a friend.



Rachael signed autographs and posed for photos with ISI fans following the Education Foundation Benefit on Ice show.

**ISI:** We enjoyed hosting you as the star of the ISIA Education Foundation Benefit on Ice show during the ISI Worlds competition in Boston this year. What were your

**observations regarding this event and the ISI skating community?**

**Rachael:** Thank you so much for inviting me to take part in the show! It was my honor and pleasure to be a part of a terrific event! The ISI Worlds competition looked like it was so much fun! I loved watching some of the events in between my practices, not only because of the inventive costuming and choreography, but to see how much fun all of the skaters were having. It was wonderful to see skaters of all ages participating as well. It was an honor to skate in the Benefit Show because the audience supported each skater and group, so the atmosphere was exciting and enthusiastic.

**ISI: Congratulations on your acceptance to Stanford University. What is your major?**

**Rachael:** I am deferring my start at Stanford until the autumn of 2011, and I am planning to major in chemical engineering.

**ISI: Do you still have time to volunteer with Reading Is Fundamental? Are you active with any other organizations or causes?**

**Rachael:** Since I am deferring a year at Stanford, I have a little more free time to volunteer this year. I am still working with Reading Is Fundamental, and I plan to get even more involved than I currently am in my local community. I am definitely looking forward to that. In the meantime, I have also started volunteering at my high school, helping out with the AP classes and with the encouragement of the school counselors, started a weekly seminar program based upon the Women's Sports Foundation program, "Go Girl, Go!"

**ISI: What is your current training and skating schedule? Do you have your sights on the 2014 Winter Olympics?**

**Rachael:** I currently train at the Colorado Springs World Arena and Ice Hall. Tom Zakrasjek is my primary coach, and I also work with Becky Calvin, Janet Champion, Christy Krall, Erik Schulz and Patti Gottwein. I also train for several weeks each season in Toronto with my choreographer, Lori Nichol. I am gearing up for the upcoming Senior Grand Prix circuit. I am certainly looking forward to this season, but I am just taking my skating year by year, as I have always done. The Sochi Olympic Games are four years off, so I am staying focused on the upcoming season and what I need to do in order to achieve my goals for this season.

**ISI: What is your advice for young skaters who love ice skating, including those who want to skate for the fun of it (recreationally) as well as those who aspire to the elite competitive level?**

**Rachael:** My advice is to follow your heart and your passion. Do what makes you happy, work hard and enjoy life! **RS**



Love at First Skate

If you're stepping on the ice for the first time or you're already a regular at the rink, count on Riedell for a comfortable and carefree experience.

What's your favorite part about skating? Share your story at [iSkateRiedell.com](http://iSkateRiedell.com).



©2010 Riedell Shoes, Inc.



# Keep Getting This Magazine!

The ISI membership term is Sept. 1 through Aug. 31. If you haven't renewed for the current season, be sure to **RENEW TODAY** so you can continue receiving ALL of ISI's fantastic MEMBERS-ONLY benefits!

**3 choices**  
and They're  
All Winners!

- Only current ISI members can register tests.
- Only current ISI members can participate in local, district and national ISI competitions and shows.
- Only current ISI members receive *Recreational Ice Skating* magazine and can participate in the ISI Pen Pal Program.
- Only current ISI members receive excess accident insurance.

☒ **GOOD \$15**  
1 membership term (thru August 2011)

☒ **BETTER \$25 SAVE \$5!**  
2 membership terms (thru August 2012)

☒ **BEST \$50 SAVE \$25!!!**  
5 membership terms  
(thru August 2015)

**Renew online today –**  
**it's fast and easy at [www.skateisi.org](http://www.skateisi.org)!**  
**Or mail in the renewal card at right >>>**





**April 8-10**  
**The Edge Ice Arenas**  
**Bensenville, Illinois**

**Entry Deadline: Feb. 1**

What better place for your synchronized team to compete than in Chicago, where team spirit has created the culture? Even a calculator won't help you count all the great reasons to visit Chicagoland in the springtime. There's the acclaimed food, Michigan Avenue's Magnificent Mile, Navy Pier, world-renowned museums, Lincoln Park Zoo (one of the last free zoos in the country), historic Wrigley Field, the "L" train – the list is endless! Share your synchronized spirit at The Edge Ice Arenas, and don't miss the second annual Synchro Showcase on Saturday night!

More Info:  
[skateisi.org/Synchro](http://skateisi.org/Synchro)  
[explorechicago.org](http://explorechicago.org)  
[bensenville.il.us](http://bensenville.il.us)

**For event details and entry forms...**  
**[skateisi.org/Synchro](http://skateisi.org/Synchro)**





# It Was a Wonderful, Wonderful Worlds!



The 2010 ISI World Recreational Team Championships in Marlborough, Mass. was a smashing success, with more than 1,500 happy competitors, a bustling Skaters' Marketplace, a Competitors' Cruise with nearly 750 participants and a memorable ISIA Education Foundation Benefit Show featuring Olympian Rachael Flatt.

Nashoba Valley Olympia of Boxborough, Mass. took home the Michael Booker Trophy for the most overall team points. More than 100 rink teams from 25 states and four countries participated, with skaters ranging in age from 2 to 85.

Special thanks to New England Sports Center and volunteers from ISI host districts 1, 2 and 3, all of whom helped make Worlds 2010 the event of a lifetime for many recreational skaters and their families.

Next year's Worlds is set for July 25-30 at Schwan Super Rink in Blaine, Minn. See you there!



We had an absolutely fantastic time at Worlds in Boston. This was our third Worlds experience and because of the

fun, friendships and great skating competition, we will be back as often as possible! The Boston harbor cruise was unforgettable, and the show Friday night was a great ending to a fabulous week. Thanks to everyone who helped coordinate this ISI event, your efforts are appreciated.

—**Connie Savaglio, Florida**

My favorite memory of the 2010 ISI Worlds competition was winning first place in Freestyle 3. I had a great time on the Boston cruise with my mom and skating friends. Also, seeing my idol, Rachael Flatt, skate in the show and actually getting to meet her and having her sign my skate was over the moon! All in all, it was a week I will never forget. —**Olivia Hebert, Massachusetts**



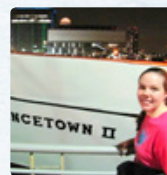
Every year I work really hard to go to Worlds. I like it because we get to meet skaters from all over the world. I got to become friends with two girls from Manila and Mexico City. We all wanted first place, but the experience is the best part for me. It's a lot of fun and hard work but it's worth the time.

—**Juliette Alexis Rojas, Missouri**



This was our daughter's first time attending ISI Worlds. She was super excited to meet (FS 10 skater and scholarship winner) Delanie Honda, because my daughter's name is Delaney; for her to read about another figure skater who shares her name, then to watch her skate was awesome! Delaney is 8 years old and this was her first year watching the Olympics and to see Rachael Flatt was a treat.

—**Tonya Armenti, Virginia**



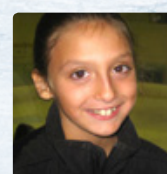
I had so much fun at Worlds this year! I had tons of fun dancing with my friends on the cruise, and I was so excited to see

Rachael skate in the Benefit Show — she skated beautifully! I also enjoyed competing, trading pins and meeting other skaters. I will never forget 2010 Worlds, and I definitely cannot wait for next year! —**Kendall Royes, Texas**

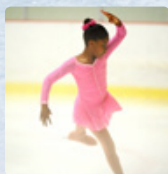
I competed with seven other girls in Freestyle 1 for age 9. The element I was stuck on was the backward edge.

It was hard for me! I practiced and practiced and practiced so it would be perfect for Worlds. When I went to Worlds I was really, really nervous but when I got out on the ice the butterflies in my stomach flew away and I did my routine. And I won! I was so proud of myself I felt like screaming!

—**Francesca Gonnella, Massachusetts**







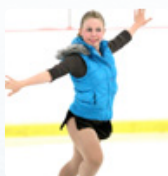
My favorite memory from Worlds was seeing fellow ice skaters from other states and other countries approach my daughter

and ask her for trading pins. Those were some beautiful moments.

—**Dr. Andrea Smith-Hunter, Kentucky**

This was the first time

the girls from Cape Ann Figure Skating Club skated in the ISI Worlds competition, and they all had a fantastic time. Spending a week together truly brought our team closer together and each of them is looking forward to the next team event. Thank you so much for hosting such a wonderful event. This event was the first time sisters Samantha and Kimberly Way skated together. They both have always loved ice skating, however, never had the opportunity to compete as a pair. Skating together was so much fun for them, and it really made them appreciate each other's talents. Our club ensemble team also spent months preparing for this event. Together they helped build the props while the moms created the beautiful costumes they wore. This was truly a team effort, building a friendship between these girls that will last a lifetime. —**Sharon Way, Massachusetts**



My favorite memory from the ISI World Team Championships was meeting people from around the globe. My team and I

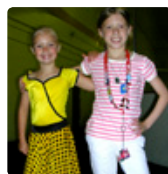
met a skater from the Philippines and hung around with them a lot throughout the course of the competition. It is something that I will never forget! The most rewarding thing was that I won the raffle and got to skate in the Benefit Show. It was such a great experience. The sound of the audience clapping and cheering when you are skating is such a wonderful feeling

that I will take with me for the rest of my life! What makes ISI competitions so special is that they are all really just for fun. You have the opportunity to meet world-class figure skaters, but there is no pressure and there is no tension between competitors whether they took first place or last place. It is just all fun the entire competition.

—**Carla Brunini, Florida**

I acted as the Red Yip Yip character and my partner and best skate friend, Kayla Mook, acted as the Blue Yip Yip character from Sesame Street. We were so

excited to hear we placed first in the competition. My favorite memory of Worlds 2010-Boston was the cruise held for all competitors. That was a lot of fun. It was a time to forget about competing and just have fun, meeting new friends and reuniting with old ISI friends. —**Marci Medina, Texas**



My daughter, Kaitlyn Grady, age 7, loved every minute of her first Worlds experience. The pin trading with girls from all

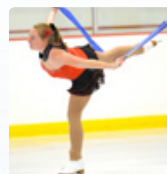
over our country and even other countries was her very favorite part!

—**Jackie Grady, Massachusetts**

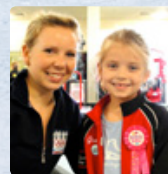
This was my first ISI Worlds event and it was amazing! There was a wide variety of events to take part in, and I chose to enter five. I was glad I did because I had fun with everyone. I even became friends with one of my competitors who was a girl from Hawaii. I also really enjoyed the Benefit Show with Rachael Flatt. Worlds was a great experience and I

can't wait to do it again!

—**Erica Lovrin, New York**



This was our first Worlds competition. My husband is in the military and



worked out his leave so we could attend the competition as a family and cheer for our kids, Conor and Gretchen. Conor

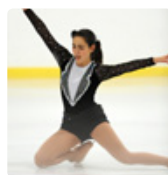
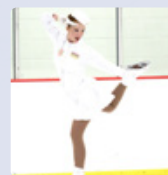
loved being a runner and exchanging pins. The week was wonderful. It finished off with a big party to celebrate the team and Gretchen's 6th birthday. She just happened to catch Rachael Flatt and her mom, and they took some extra time out for the birthday girl. We can't wait until next year.

—**Holly Irwin, Connecticut**

This was my fourth Worlds and it was amazing. I met so many new friends, toured the area, and had the best time.

This was my second Worlds in Boston and I believe this was the best.

—**Jessi Barrett, Texas**



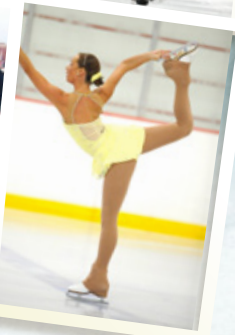
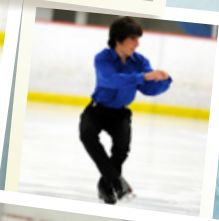
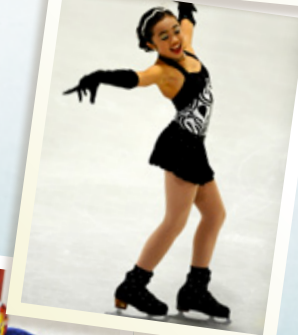
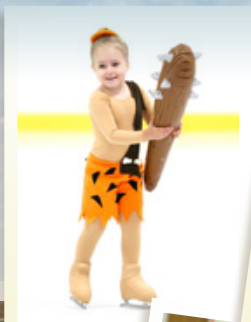
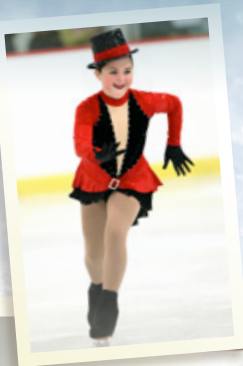
Out of all of my previous competitions, ISI Worlds 2010 was definitely the most fun I've ever had.

After competing in three solo events, I joined my team for two group events. I competed against a girl from California, and we swapped e-mails while waiting for the results. My favorite solo program was my Artistic program. I didn't place first, but I wasn't disappointed; I knew that having fun and trying my best was all that mattered. My favorite moment was when my entire team stood on the ice shivering from both the cold and from nervousness as the judges prepared to announce the overall score for the competition. We waited in suspense for our team name to be called, and when we found out we had won first, we were ecstatic! I had a wonderful time at this ISI Worlds competition and look forward to the next. Thank you, ISI!

—**Stephanie Ward, Massachusetts**



# 2010 ISI WORLD RECREA

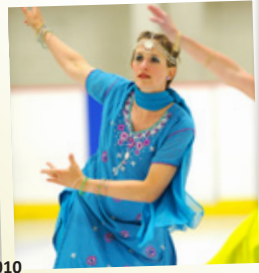
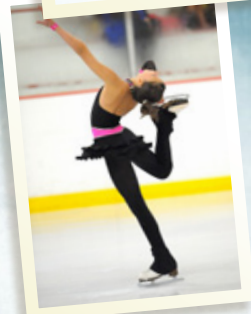
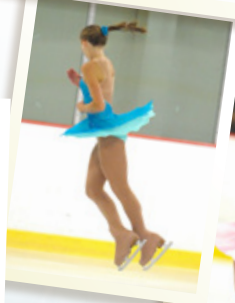
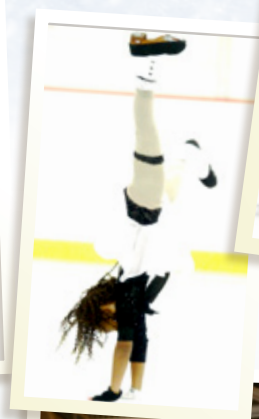


## TOP 10

PLACE	TEAM	TOTAL POINTS
1	Nashoba Valley Olympia	1054.5
2	Sharper Edge Skating School	1014.5
3	Norwich Skating School	936.5
4	Center Ice Arena	672.0
5	Winterland Skating School	643.0
6	FMC William Chase Arena	571.5
7	Skating Club of Greater Youngstown	564.5
8	FMC Aleixo Arena	485.0
9	Capitol Ice Academy	483.5
10	K Lynn Skating School	446.5

*For complete list of teams and results, go to [skateisi.org/worlds\\_results](http://skateisi.org/worlds_results).*









## competitors' corner

BY RANDY WINSHIP | ISI Director of Skating Programs & Events



# Ready...Set...and Off We Go!

**The new year is right around the corner** — it's time to get ready and get set, so you can GO to an ISI national event in 2011! We have six (count 'em: SIX!) national competitions planned for the coming year, and you and your family won't want to miss these fantastic events.

**Winter Classic in St. Louis** The third time is definitely the charm for the fabulous three-sheet St. Peters Rec-Plex. The management and staff are pulling out all the stops to welcome us back as they host their third ISI national event. The convenience of having all three sheets at one complex is a plus, and this is a great place to sample some of that friendly Midwestern hospitality. Meet us in St. Louis Feb. 11-13 for an event you won't soon forget!

**Synchronized Championships in Chicago** The Windy City will be ready as synchro teams converge from across the U.S. The three-rink Edge Ice Arena is also very familiar to our national events, having previously hosted the ISI World Team Championships and Synchronized Championships. The central location and easy access from O'Hare Airport make this an ideal competition spot.

**Conference Championships in Dallas** Our bonus this year is the return of our Conference Championships event, immediately following ISI's annual conference and trade show. The first one was held in Orlando in 2009, commemorating ISI's 50th anniversary, and it proved to be a huge success. The celebration will continue in Dallas on Memorial Day weekend on three sheets of the Dr Pepper StarCenter rinks.

**World Team Championships in Minneapolis** — Get ready for the "grand daddy" of them all! What better place to host our largest national event than at the largest ice skating complex in the USA? The incredible Schwan Super Rink at the National Sports Center will host Worlds for the third time (do you see a theme for three's in next year's events?). With an amazing eight full-size indoor ice sheets under one roof, there is more than enough ice for everyone! Summer is a great time to experience Minnesota!

**Adult Championships in Tampa** After our successful competition in Las Vegas, we head to another "hot" location. Join us in Tampa with other skaters age 18 and older to participate in an exciting competition event just for you! Collegiate skaters are the newest age group to join

our event, so grab your college friends, form your team and plan a fun getaway weekend in Tampa. New in 2011 will be the presentation of a special Collegiate Champion trophy during our final team awards.

**Artistic Challenge in Burbank** We head back to Burbank for our final event in 2011. Rich in skating history, Pickwick Ice Center was the host of our most successful Artistic Challenge to date. We look forward to another California adventure — and what better place to be the first weekend of December?

As you can see, the competitions, locations and opportunities are all there for you! Save your dates and plan now to take part in at least one national event in 2011. If there isn't one close to home this year, then don't let that stop you. Take a trip and enjoy skating in another part of the country. You'll have a great time and a great trip, and best of all, you'll meet some great new skating friends!

Be sure to check out the website at [skateisi.org](http://skateisi.org) for all the event details as they become available. For more information, please contact the ISI office at [events@skateisi.org](mailto:events@skateisi.org) or (972) 735-8800.

**Don't wait—  
come and  
skate at an  
ISI national  
event in 2011!**

## High-Level Tests

Congratulations to the following ISI skaters who have recently passed high-level tests:

### FREESTYLE 8

Victoria Anasovitch  
Vacaville Ice Sports

Colleen Coughlin  
FMC Navin Arena

Jordyn Jensen  
Northbrook Sports Center

Lia Rubino  
Homewood-Flossmoor Ice Arena

Mallory Schindler  
Northbrook Sports Center

Anna Wattles  
St Peters Rec-Plex

### FREESTYLE 9

Amanda Kennedy  
Wayne C. Kennedy  
Rec. Complex

Emily McNally  
Symmetrical Skating School

### COUPLE 8

Blair Mack  
Mallory Schindler  
Northbrook Sports Center

### DANCE 8

Paige Halas  
Montclair Inside Edge

Joan Josephson  
Floyd Hall Arena

Margo Perl  
Floyd Hall Arena

### DANCE 9

Angela Bean  
Dr Pepper  
StarCenter Plano

### DANCE 10

Breese  
Gindlesperger  
Center Ice Arena

# Focus On



## 2011 Discount Events

Who doesn't like a discount? The discount events offered at our national competitions provide a cost-saving way to get more medals and have more fun!

All skaters who enter any ISI national event in 2011 can qualify for these special discounts — just read the details carefully on the entry forms.

On the Individual entry form, you will pay \$75 to enter your first individual or partner event. You can then pay the discounted \$10 entry fee to enter Rhythmic Ball, Hoop, Ribbon, Solo Surprise and/or Jump & Spin — so that could be a total of five additional events for only \$50 more!

On the team entry form, you will pay \$25 to enter your first group or team event. You can then pay the discounted \$10 entry fee to enter Team Compulsories and/or Team Surprise.

### Here is a brief description of our 2011 Discount Events:

**Rhythmic Ball/Hoop/Ribbon** These events are like rhythmic gymnastics, but on ice! Choose your prop (follow the prop specification guidelines in *The ISI Handbook*) and create an entertaining routine. Any music can be used, but the most important part of this program is using your prop throughout the routine. Skaters can enter one, two or all three Rhythmic Skating events at our national competitions.

**Solo Surprise** Enter this event to have a great time on the ice! This game or task usually has nothing to do with skating ability level. The first skater to complete the game or task is usually the winner. Some higher-level games involve skating maneuvers, but the skill or technique is never judged in the Surprise events — it's only for *FUN*!

**Jump & Spin** This event is twice as fun with a friend! It's similar to a Solo Compulsory event, but with two skaters. Choose a skating friend in the same category level (they don't have to be the same test level) and then decide who will do the jump and who will do the spin. Each skater has two attempts and the best attempt will be scored. The skaters enter and exit the ice together and the jump skater goes first, followed by the spin skater.

<b>Low</b>	Skaters in Pre-Alpha through Delta only Jump — 2-Foot Hop or Bunny Hop Spin — 2-Foot Spin
<b>Medium</b>	Skaters in Freestyle 1-3 / Bronze & below Jump — 1/2 Flip or Toe Loop Spin — 2-Foot or 1-Foot Spin
<b>Intermediate</b>	Skaters in Freestyle 4-5 / Silver & below Jump — 1/2 Loop or Axel Spin — Sit Spin or Back Spin
<b>High</b>	Skaters in Freestyle 6-10 / Gold / Platinum Jump — Dbl. Salchow or Dbl. Loop & below Spin — Flying Camel or Flying Sit

Only the technical accuracy of the maneuver is judged, so you do not get more credit for doing a higher-level maneuver.

**Team Compulsories** This team event is lots of fun and also entertaining to watch. There are six skaters required for Freestyle 1-5 level teams and seven skaters for Freestyle 6-10 level teams. Each team skater must perform one required maneuver (two times each, in the order listed in *The ISI Handbook*).

While one skater performs the required maneuver, the other skaters are doing background choreography for the routine. Small hand-held props can be used. Themes for these programs have included cheerleaders, baseball, cowboys, clowns, etc.

Get your skating friends together who are all about the same age and ability level and ask your coach to help put this number together. Maybe you can even perform it at a rink exhibition or ice show, too!

**Team Surprise** If solo surprise events are fun, then Team Surprise events are a blast! Four friends are needed from the same skating category levels as in Jump & Spin category levels above. Again, the relay or task must be completed by all team members and the fastest team is usually the winner. *ISI*

**Plan now to take advantage of the special opportunity to get more events for less \$\$\$ at all of our 2011 national events!**





SSM3066

# SHATTUCK-ST. MARY'S FIGURE SKATING

*Pursuing your passion for skating while preparing your mind for college...*

**Daily On and Off-Ice Training**  
**Dartfish® Technology**  
**Vertimax Jump Trainer**  
**Exhibitions & Ice Shows**  
**Full Competition Schedule**

Go to [s-sm.org](http://s-sm.org) and meet  
 our talented coaches  
**Diana Ronayne**  
**& Tom Hickey**  
 known throughout the  
 national and international  
 world of figure skating.

**Introducing**  
**Synchronized Skating**  
**Directed by Vicki Korn!**

**2009-10 Figure Skating Accomplishments**

**Testing**

- 6 U.S. Figure Skating Gold Medal Tests Passed
- 5 Test Sessions - 45 Passed

**19 Competitions - 96 Medals**

- 4 Nonqualifying
- 5 National (U.S. and Int'l)
- 5 Regional
- 1 Junior Grand Prix
- 3 Sectional
- 1 Junior World

**admissions@s-sm.org**  
**1-800-421-2724**

• College Prep  
 • Boarding & Day  
 • Grades 6-12

SHATTUCK-ST. MARY'S  
 Faribault, Minnesota  
[www.s-sm.org](http://www.s-sm.org)

Lisa Geloneck

Katelyn Smith

Kassidy Ordish

Tamsin Rogers



Maren Schultz



Kaitlyn Finnegan



Makayla Murdaugh



Mariko Ruettimann

# Contest Entries

View card entries online at [skateisi.org/holiday](http://skateisi.org/holiday)

## SP-Teri



## ZERO GRAVITY LICENSE TO FLY

The latest light weight skating boots.

Standard Features:

V notch for optimal ankle flex.  
Low cut back for ideal toe pointing and better Achilles comfort.  
Cushioned insole for shock absorption with anti friction top cover.  
Suede synthetic lining to wick moisture from feet and ankle comfort.

Available at a SP-Teri dealer near you.

SP-Teri Co., Inc. 436 North Canal Street, Unit 1 • South San Francisco, CA 94080  
Phone (650) 871-1715 • Fax (650) 871-9062 • [www.spteri.com](http://www.spteri.com)



# 2010 ISI

# ADULT

OCTOBER 8-10  
LAS VEGAS ICE CENTER

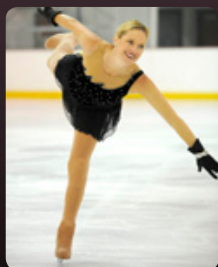
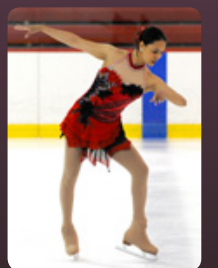
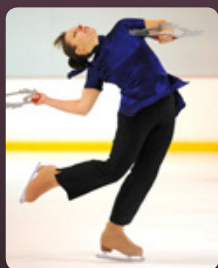
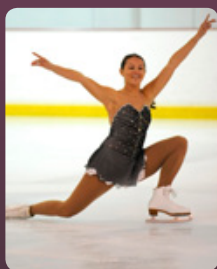
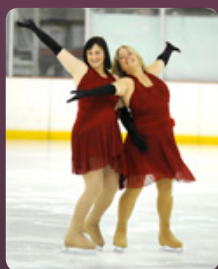
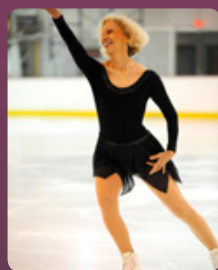
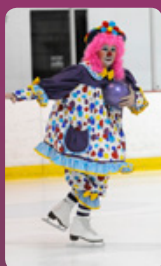
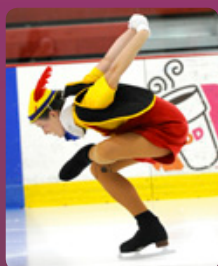


Congratulations to the Sacred Heart University Team, winners of the Erika Amundsen trophy, awarded for most overall team points in the ISI Adult Championships. Nearly 200 Adult Champs competitors, representing 47 rink teams from 19 states, entered a total of 780 events. Next year's Adult Champs competition is scheduled for Sept. 30-Oct. 2 at Tampa Bay Skating Academy-Oldsmar.

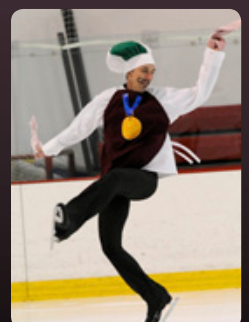
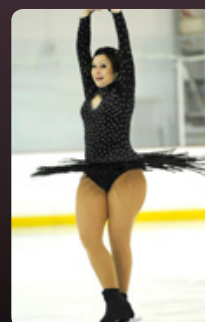
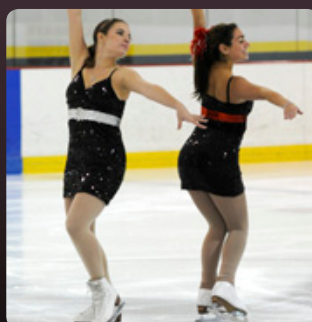
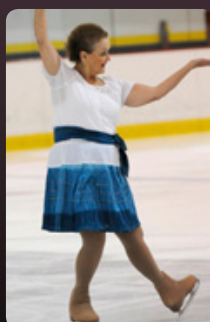
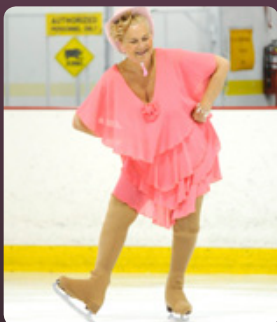
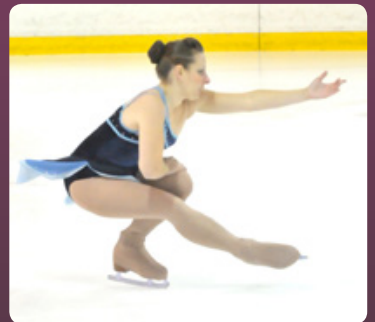
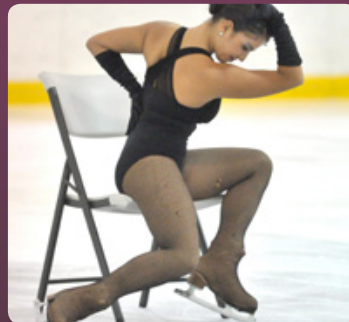
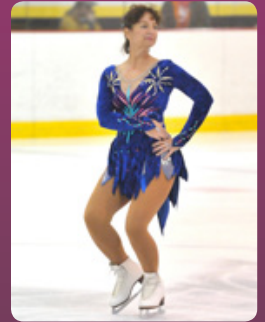
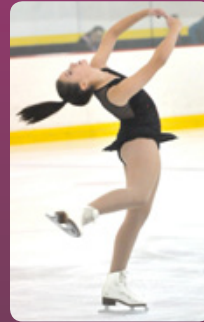
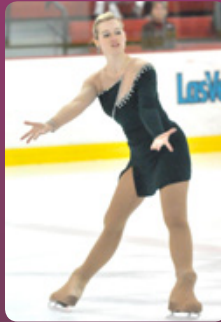
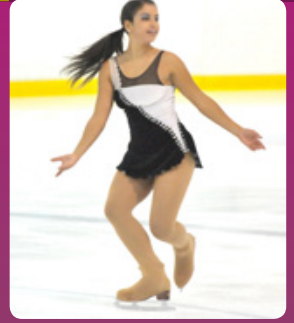
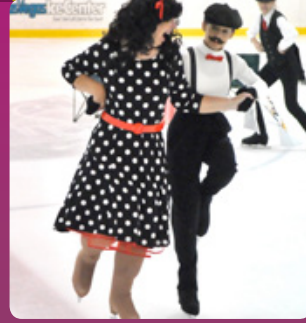
## TOP 10

PLACE	TEAM	TOTAL POINTS
1	Sacred Heart University	419.0
2	Tampa Bay Skating Academy-Countryside	343.5
3	Ellenton Ice & Sports Complex	314.0
4	Superstars Figure Skating Club	167.0
5	Capitol Ice Academy	165.0
6	Skatetown	128.0
7	Arkansas Skatium	115.0
8	Channel Islands Ice Center	104.5
9	Lloyd Center Ice Rink	92.5
10	Oak Lawn Ice Arena	82.0
10	Las Vegas Ice Center	82.0

For complete list of teams and results, go to [skateisi.org/adult\\_results](http://skateisi.org/adult_results).



# CHAMPIONSHIPS







## ISI IS COLLEGE-BOUND!



### Sacred Heart Goes to Head of the Class with Adult Champs Win

by Lisa Fedick

**W**hen Sacred Heart University Vice President Jim Barquinero approached me three years ago about coaching a competitive intercollegiate figure skating team, my initial reaction was to construct a laundry list of reasons why the idea was doomed to fail — the first and most obvious being that Sacred Heart did not have a rink on campus. I quickly discovered that amazing skaters were hiding out at SHU, including one who had previously skated in the U.S. Junior Nationals and had taken refuge on the women's NCAA Division I ice hockey team.

Many of them sat back and watched us at first, but soon they started coming forward, one by one, because regardless of what had happened in their past ice lives, they share a common irrepressible bond — a love of figure skating — and an incredible support system — each other.

"The figure skating team has brought a totally different dynamic to Sacred Heart and our club sports," notes Raymond E. Mencion, Sacred Heart's athletic director of club sports. "Since we are one of the only figure skating programs in the area, it gives us an edge in recruiting students to our university."



## Take the Edge Off the Cold

Designer & Manufacturer of Fine Skating Accessories



- Keep Feet Warm
- Extend Boot Life
- Protect Boots From Moisture & Wear
- Add Support to Broken Down Boots
- Keep Laces In Place & Secure Boot Fit
- Attractive & Stylish Design

**Say Goodbye to Cold Feet**


# BOOT GLOVES

P.O. Box 893  
Seal Beach, CA 90740

Phone or FAX  
(562) 431-0223

bootgloves@icelight.biz  
www.icelight.biz

## Make Your Own Ice Rink with **NICE RINK®**



- NiceRink® Bracket sideboard support system
- Ultra strong NiceRink® liners
- NiceRink® plastic boards
- Outdoor rink resurfacers

*A pristine sheet of ice that's all yours...*

**Everything you need to make your own!**

**NiceRink® plastic boards & brackets**

**888-NiceRink (642-3746)**

Any size – details online at [www.NiceRink.com/isi](http://www.NiceRink.com/isi)

Karen Guastelle, dean of undergraduate admissions and the team's faculty advisor, adds, "Figure skating is a wonderful offering for the university because unlike a traditional team sport, a team can be as small as one skater and there is no maximum number who can participate; all are encouraged to apply."

As a coach, I credit the ISI program with much of my early success with this team.

Monica Malcomson, a sophomore Platinum-level skater, says it best: "I took a year off from my education after high school to tour with Disney on Ice in *High School Musical*. The ISI program has ignited a new desire for the love of the sport. This program is like no other and it combines everything that an artistic sport should include: excitement, fun, a supportive environment, positive energy and lasting expressive impressions. I feel like the ice is my stage and there are no competitors, only an audience of encouraging spectators. It is a wonderful vehicle for collegiate teams to explore their talent and experience a stress-free atmosphere."

The ISI program also provides a unique opportunity for skaters of all abilities to participate and be a part of the team.

"I had skated when I was younger and always enjoyed it," says sophomore Elisabeth Pitruzzella, an Alpha-level skater. "When I came to SHU, one of the girls on the team encouraged me to join. Attending practices is good exercise and a great way to take a break from a hectic college schedule and enjoy the ice."

"Because I am not as advanced as the rest of the girls on the team," she adds, "I feel more comfortable participating in ISI competitions, where I compete against skaters who are either my age or older, or younger skaters who are at my level. It relates well to collegiate skating because it helps get everyone on the team involved."

Initially branded as a "boutique sport," our goal was simply to be taken seriously by the university community. In my wildest dreams I never imagined that one month into our third season, we would be returning from Las Vegas with the 2010 ISI Adult Championships trophy!

"Ultimately we want to see the team continue to grow both in size and skill," Mencio says. "We want to start a tradition that the Sacred Heart Figure Skating team is synonymous with intercollegiate figure skating. In the future we would love to add a synchronized skating team and have the same level of success our figure skating team enjoys."

To learn more about the Sacred Heart Intercollegiate Figure Skating Program, please contact me at fedickl@sacredheart.edu. To learn more about ISI Collegiate Figure Skating or to start your own team, please contact Alane Swiderski, ISI college and university section representative, at aswiderski@fmcicesports.com. **RIS**

# Are You a Skating Scholar?



Emily Miller, 2008 scholarship recipient

ISI members are well-rounded individuals who put as much energy into their life off the ice as they do on it. We believe that both educational and recreational pursuits are necessary to achieve a balanced life.

Each year, the ISIA Education Foundation awards scholarships to ISI skaters who have demonstrated a commitment to academics and service. The application process is open to students in their senior year of high school through

their junior year in an undergraduate program. However, most recipients began their qualification process during their middle-school years. Start your four-step process of qualification today!

- 1** Maintain at least a 3.0 GPA.
- 2** Participate in a variety of school and community activities. Keep detailed records, including frequency of participation.
- 3** Continue to test and compete in the ISI program, especially during the two years prior to application. Keep good records of all skating activity.
- 4** Prior to application, complete 120 hours of verified service, of which at least 60 must be in association with an ISI member facility. This information must be recorded on the Service Hours Verification Form, which is part of the scholarship application available at [skateisi.org](http://skateisi.org).

**Application deadline is  
March 1**

For more information or to apply, go to [skateisi.org](http://skateisi.org) or call (972) 735-8800





**Ice Skating  
Institute**



**weSKATE<sup>®</sup>**

**RECREATIONAL ICE SKATING PROGRAM**

***Adventures  
& Activities***

Lizzie and Alex are the weSKATE Kids, and like you, they love ice skating! Tell us your version of the weSKATE Kids story, and we'll share it with readers in an upcoming issue or on the ISI website. Use the prompts and space below to write your first draft, then email it to [editor@skateisi.org](mailto:editor@skateisi.org), if you wish. Use your imagination and have fun!

## ***THE ADVENTURES OF LIZZIE AND ALEX***

**BY** \_\_\_\_\_

Lizzie and Alex are excited about this ice skating season because \_\_\_\_\_

Their favorite place to ice skate is \_\_\_\_\_

Their weSKATE coach is \_\_\_\_\_

During their lessons, they are learning how to \_\_\_\_\_

Lizzie's favorite ice skating moves are \_\_\_\_\_

Alex's favorite skating moves are \_\_\_\_\_

During ice skating practice and public sessions at the rink, Lizzie and Alex like to \_\_\_\_\_

They are making their plans for this season's ISI competitions and shows, including \_\_\_\_\_

The events and performances Lizzie is preparing are \_\_\_\_\_

For his competition entries and show performances, Alex is working on \_\_\_\_\_

Their favorite thing about participating in ISI events is \_\_\_\_\_

Lizzie and Alex can't wait to tell their friends about \_\_\_\_\_

**It's going to be a great skating season for the weSKATE Kids!**

# weSKATE...

# SUDOKU STYLE!

If you haven't tried solving a Sudoku puzzle yet, be careful - It may just get you "hooked" when you're not on the ice! Here's one for beginners and one for the more experienced.

Using the skating term "FLIP" fill in the missing letters F-L-I-P, so that each row, each column and each corner block of 4 has the letters needed to complete the word. Remember, no row, column or block will have the same letter in it twice!

	F		
		I	
L			P

Was that too easy? Try it again with "HALF JUMPS"!

	P		S		A		U	
S			P	F	J			A
	U	P	H		L	A	J	
	M	S	J		U	F	H	
J	L		F		S		M	P
P			U		M			H
	S	J				P	A	

F	L	P	I
P	I	L	F
L	F	P	I
I	P	L	F

answers

U	H	P	J	A	F	S	M	L
S	F	A	L	M	U	H	P	J
J	M	L	H	S	P	U	F	A
L	A	U	F	J	H	P	S	M
H	J	S	A	P	M	L	A	U
F	P	L	S	M	J	F	H	S
P	A	S	U	M	P	J	L	A
M	U	H	P	J	A	F	S	M

**10%**  
off entire order

coupon code:  
**isimag10**

offer valid  
through 2/28/11

800-872-1996 • [www.skatetape.com/isimag10](http://www.skatetape.com/isimag10)

When it comes to *figure skating* videos...  
**we have it all.**

Everything from fundamentals to the Olympics.

**Skatetape**  **com**



## competitions

### december

#### 3-5 Taylor MI

Taylor Sportsplex  
TSX Winter Extravaganza 2010

#### 3-5 White Bear Lake MN

White Bear Lake Sports Center  
White Bear Lake Holiday Open 2010

#### 4-5 Burbank CA

Pickwick Ice Center  
Pickwick 2010 ISI Holiday Competition



**10-12 Northbrook IL**  
Northbrook Sports Center  
ISI Artistic Challenge

**29 Rolling Meadows IL**  
West Meadows Ice Arena  
Frost Fest 2010

## ► 2011

### january

#### 8 Plymouth MI

Plymouth Ice Center  
Blizzard Blast 2011

#### 14-16 Wayne MI

Wayne Community Center  
Wayne ISI Competition 2011

#### 14-16 St. Louis MO

Wayne C. Kennedy Recreation Complex  
22nd Annual Sweetheart Open

#### 15-16 Centennial CO

South Suburban Family Sports Center  
South Suburban Family Sports ISI  
Competition

#### 15-16 Auburn MA

FMC Horgan Arena  
Auburn Winter Challenge

#### 15-16 Youngstown OH

Covelli Center  
Skating Club of Greater Youngstown  
All American Challenge Cup

#### 16 San Diego CA

Kroc Center Ice  
Kroc Center Ice 2011 ISI Open

#### 17 Carol Stream IL

Carol Stream Ice Rink  
Snowflake Competition

#### 22-23 Gillette WY

Spirit Hall Ice Arena  
2011 New Year Ice Breaker

#### 23 Franklin Park IL

Franklin Park Ice Arena  
Kickline Synchronized Skating Competition

#### 28-30 Glenview IL

Glenview Ice Center  
The Freeze

#### 28-30 Westland MI

Mike Modano Ice Arena  
Wild Wild Westland ISI Competition

#### 28-30 Williamstown MA

Chapman Ice Rink-Williams College  
2011 Bay State Games

### february



**11-13 St. Peters MO**  
St. Peters Rec-Plex  
ISI Winter Classic

#### 11-13 Bremerton WA

Bremerton Ice Center  
Love to Skate

#### 11-13 Blaine MN

Schwan Super Rink NSC  
2011 Frosty Blades

#### 12-13 Niles IL

Niles Park District Iceland Arena  
Sweetheart Open

#### 18-20 Oxford OH

Goggin Ice Center  
2011 ISI Miami Open Team Competition

#### 19-20 Bensenville IL

Edge Ice Arena  
Mardi Gras

#### 19-20 Nashville TN

Centennial Sportsplex  
26th Annual ISI Invitational

#### 19-21 Plano TX

Dr Pepper StarCenter  
ISI Love to Skate 2011

#### 25-27 Southgate MI

Southgate Civic Center  
Southgate ISI Winter Competition

#### 26-27 Oak Lawn IL

Oak Lawn Ice Arena  
Reach for the Stars

### march

#### 4-6 Park Ridge IL

Oakton Ice Arena  
Ice Breaker Classic

#### 12-13 Natick MA

FMC William Chase Arena  
40th Annual ISI Competition

#### 18-20 Oldsmar FL

Tampa Bay Skating Academy  
2011 ISI District 18 Championship

#### 26-27 Luverne MN

Blue Mound Ice Arena  
Spring Fling

### april

#### 1-3 Knoxville TN

Ice Chalet  
42nd Annual Robert Unger ISI Skating  
Competition



#### 8-10 Bensenville IL

The Edge Ice Arenas  
ISI Synchronized Skating  
Championships

#### 16-17 Franklin Park IL

Franklin Park Ice Arena  
Spring Fever Competition

#### 16-17 San Mateo CA

Ice Center San Mateo  
April Ambush

### may



#### 28-30 Dallas TX

Dr Pepper StarCenter  
Plano & PSA StarCenter  
ISI Conference  
Championships

### july



#### 25-30 Blaine MN

Schwan Super Rink  
ISI World Recreational  
Team Championships

### september



#### 30-Oct. 2 Oldsmar FL

Tampa Bay Skating  
Academy-Oldsmar  
ISI Adult Championships

### december



#### 2-4 Burbank CA

Pickwick Ice  
Skating Center  
ISI Artistic Challenge

## shows & exhibitions

### december

#### thru Dec. 19 Arlington TX

ICE at The Parks  
Holiday Mini-Shows

## 1-2 Honolulu HI

Ice Palace  
Hollywood Christmas

## 3-4 Belmont CA

Belmont Iceland  
2010 Winter Extravaganza-Hawaiian  
Holiday on Ice!

## 3-5 Clearwater FL

Tampa Bay Skating Academy  
TBSA Countryside Holiday Show

## 4 Laconia NH

Central New Hampshire Skating Academy  
Laconia Ice Arena  
Spread Your Wings and Soar

## 4 Anaheim CA

The Rinks-Anaheim Ice  
Anaheim Ice 16th Annual Holiday  
Spectacular

## 4 Newark OH

Lou & Gib Reese Ice Arena  
Holiday Exhibition

## 4-5 Pittsburgh PA

RMU Island Sports Center  
2010 Holiday Spectacular

## 4-5 Franklin Park IL

Franklin Park Ice Arena  
2010 Holiday Recital

## 5 Luverne MN

Blue Mound Ice Arena  
Will Skate for Food

## 5 Euless TX

Dr Pepper StarCenter  
2010 Ice Fest

## 5-Jan. 15 Oldsmar FL

Tampa Bay Skating Academy  
Winter Recital and Open House Exhibitions

## 7-11 Knoxville TN

Ice Chalet  
23rd Annual Nutcracker on Ice

## 10-11 Dublin CA

Dublin Iceland  
Dublin Iceland Holiday Show

## 10-11 St. Peters MO

St. Peters Rec-Plex  
17th Annual Winter Wonderland on Ice

## 10-12 Evanston IL

Robert Crown Ice Center  
36th Annual Nutcracker on Ice

## 11 Fremont CA

Sharks Ice at Fremont  
Skate a Holiday Present

## 11 Oldsmar FL

Tampa Bay Skating Academy  
Holidays in Hollywood-Let's Go to the  
Movies

## 11 Farmers Branch TX

Dr Pepper StarCenter  
Once Upon a December

## 11 Frisco TX

Dr Pepper StarCenter  
Grinch on Ice

## 11 Oak Lawn IL

Oak Lawn Park District Ice Arena  
Holly Day on Ice

## 11 Westminster CA

The Rinks-Westminster Ice  
1st Annual Holiday Spectacular

## 11-12 Boardman OH

The Ice Zone  
Nutcracker on Ice

## 12 Escondido CA

Iceoplex Escondido  
A Tribute to Walt Disney

## 12 St. Louis MO

Wayne C. Kennedy Recreation Complex  
Holiday Celebration

## 12 Plano TX

Dr Pepper StarCenter  
Sights & Sounds of NYC During the Holidays

## 12 Pittsburgh PA

BladeRunners Ice Complex  
2010 Holiday Skate

## 12 Paramount CA

Paramount Iceland  
Rock & Roll Holiday Ice Show

## 12 Irmo SC

Palmetto Skate Club  
Plex Indoor Sports & Ice  
Winter Wonderland 2010

## 12 Clearwater FL

Clearwater Ice Arena  
Holiday Spectacular

## 15 San Diego CA

Kroc Center Ice  
Holiday Show

## 17-18 Lakewood CA

Glacial Garden Skating Arena  
Holiday Stories Around the World

## 18 San Jose CA

Sharks Ice at San Jose  
Skate a Holiday Present

## 18 Arlington TX

ICE at The Parks  
Holiday at the Parks

## 18 Van Nuys CA

Iceland  
Holidaze on Ice

## 18 Marlboro MA

FMC Navin Arena  
Winter Sparkler  
18 Wasilla AK  
Brett Memorial Ice Arena  
Polar Express-Christmas Ice Show

## 18 Orland Park IL

Arctic Ice Arena  
2010 Holiday Exhibition  
18-19 South Lake Tahoe CA  
South Lake Tahoe Ice Arena  
Christmas on Ice

## 18-19 Bremerton WA

Bremerton Ice Center  
Skating the Yellow Brick Road

## 19 Nashville TN

Centennial Sportsplex  
Holiday Ice Show

## 19 Roseville CA

Skatetown  
Holiday Spectacular on Ice

## 19 Yonkers NY

E.J. Murray Skating Center  
2010 Holiday Ice Show

## 19 Valencia CA

Ice Station Valencia  
Season for Giving

## 19 McKinney TX

Dr Pepper StarCenter  
Once Upon a Christmas

## 19 Elmira NY

First Arena  
Southern Tier Skating Club  
Holiday Ice Extravaganza

## 27 Glenview IL

Glenview Ice Center  
Synchronized Skating Exhibition

## 2011

### march

## 12-13 St. Louis MO

Wayne C. Kennedy Recreation Complex  
Annual Ice Recital

## 18-19 Luverne MN

Blue Mound Ice Arena  
Celebrate

## 21 Laconia NH

Central New Hampshire Skating Academy  
Laconia Ice Arena  
Spring Show

### april

## 15-17 Park Ridge IL

Oakton Ice Arena  
Club Oakton

## 22-23 Newark OH

Lou & Gib Reese Ice Arena  
6th Annual Jane McConnell Ice Show

## 23 Wasilla AK

Brett Memorial Ice Arena  
Spring Ice Show

### may

## 1 Marlboro MA

FMC Navin Arena  
Flower Power

## 13-15 Wilmette IL

Centennial Ice Rinks  
Opposites Attract

## 15 Nashville TN

Centennial Sportsplex  
Spring Ice Show

## 21-22 Boxborough MA

Nashoba Valley Olympia  
Ice Magic 2011



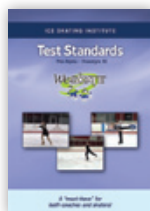


Great gifts for skaters,  
parents, coaches and skating/  
competition directors

Be sure to pick up one of each for yourself —  
you'll wonder how you ever lived without them!

#### ISI TEST STANDARDS DVD (\$20)

A must-have for coaches and skaters!  
Demonstrates the required maneuvers  
in each of the ISI tests from Pre-Alpha  
through Freestyle 10.



#### THE ISI HANDBOOK (\$25)

##### Testing section includes:

- Invaluable reference of detailed  
test requirement descriptions  
(including new Open Freestyle  
and Synchro Team tests)
- Special Skater information
- Sample dance step and  
program diagrams



##### Competition section includes:

- Complete competition  
performance rules for all individual, partner  
and team events
- National event descriptions
- Event summary chart
- Membership and eligibility requirements
- Uncaptured moves glossary
- ISI-USFSA-PSA Joint Statement of Recognition
- Competition essentials

##### Judging section includes:

- Judge certification information
- Referee responsibilities
- Judging criteria descriptions
- Scoring tips and penalties
- Penalty reference chart



To order, go to [www.skateisi.org/products](http://www.skateisi.org/products)  
or call (972) 735-8800

## Classified Advertising

### *The Champion Behind The Champion* -

Recipient of Prestigious Mom's Choice Award and  
Dove Seal of Approval. \$23.95 + S&H.

### **NEW! ADORABLE plush LambieAnn**

book character 10" & 14" (\$15 & \$20)

[www.BarbarAnn.com](http://www.BarbarAnn.com) (440) 546-9152

### **Boots & Blades for sale** - Jackson Women's

Elite coach's boots, size 8B. Used only one time.  
\$200. Jackson Ultima Lite Blades, size 367. Still  
have factory sharpening! \$75. Contact Bree with  
questions or to purchase. (970) 333-0217

**2011 Figure Skating Calendar** 12"x12" full-  
color calendar features decorated skates and  
competitions. (ISU/USFS/ISI including Synchro,  
Team and Adult). 10% proceeds to Autism Society.  
[FigureSkatingCalendar.com](http://FigureSkatingCalendar.com)



To place classified advertising, call  
Carol Jackson, advertising sales  
manager, at (972) 735-8800, fax  
to (972) 735-8815 or send e-mail to  
[cjackson@skateisi.org](mailto:cjackson@skateisi.org). The deadline for the next  
issue of *Recreational Ice Skating* is Jan. 25.

## Statement of Ownership, Management and Circulation

1. Title of Publication: *Recreational Ice Skating* 2. Publication No.: USPS 361-570 3.  
Date of Filing: 9-27-10 4. Frequency of Issue: Quarterly 5. No. of Issues Published  
Annually: Four (4) 6. Annual Subscription Price: \$12. 7. Complete Mailing Address  
of Known Office of Publication: 6000 Custer Road, Bldg. 9, Plano, TX 75023 8. Com-  
plete Mailing Address of Headquarters or General Business Office of the Publisher:  
Ice Skating Institute, 6000 Custer Road, Bldg. 9, Plano, TX 75023 9. Full Names and  
Complete Mailing Address of Publisher, Editor and Managing Editor: Publisher, Ice  
Skating Institute, 6000 Custer Road, Bldg. 9, Plano, TX 75023; Editor, Lori Fairchild,  
6000 Custer Road, Bldg. 9, Plano, TX 75023; Managing Editor, None. 10. Owner: Ice  
Skating Institute, 6000 Custer Road, Bldg. 9, Plano, TX 75023 11. Known Bondhold-  
ers, Mortgagees, and Other Security Holders Owning or Holding 1 Percent or More  
of Total Amount of Bonds, Mortgages, or Other Securities: None 12. Tax Status: Has  
Not Changed During the Preceding 12 months 13. Publication Title: *Recreational Ice  
Skating* 14. Issue Date for Circulation Data: 9/30/09-9/30/10 15. Extent and Nature  
of Circulation: A. Average No. Copies Each Issue During Preceding 12 Months (net  
press run): 33,051 Actual No. Copies of Single Issue Published Nearest to Filing  
Date: 34,203 B1. Average Paid and/or Requested Circulation Outside-County Mail  
Subscriptions: 32,696 Actual No. Copies of Single Issue Published Nearest to Filing  
Date: 33,766 B2. Average Paid or Requested Circulation In-County Subscriptions: 0.  
Actual No. of Copies of Single Issue Published Nearest to Filing Date 0. B3. Average  
Sales Through Dealers and Carriers and other non-USPS Paid Distribution: 63. Ac-  
tual No. of Copies of Single Issue Published Nearest to Filing Date: 88 B4. Average  
No. Copies of Other Classes Mailed Through the USPS: 27. Actual No. Copies of  
Other Classes Mailed Through the USPS: 25 C. Average Total Paid and/or Requested  
Circulation: 32,786. 5. Actual No. Copies of Single Issue Published Nearest to Filing  
Date: 33,879. D1. Average Free Distribution by Mail Outside-County: 1. Actual No.  
Copies of Single Issue Published Nearest to Filing Date: 3. D2. Average and Actual  
No. Copies Free Distribution In-County: 0. D3. Average No. Copies Free Distribution  
Other Classes Mailed through USPS: 11. Actual No. Copies of Single Issue Published  
Nearest to Filing Date: 8. D4. Average Free Distribution Outside the Mail: 38. Actual  
No. Copies of Single Issue Published Nearest to Filing Date: 25 E. Average Total  
Free Distribution: 50. Actual No. Copies of Single Issue Published Nearest to Filing  
Date: 36. F. Average Total Distribution: 32,836. Actual No. of Copies of Single Issue  
Published Nearest to Filing Date: 33,915. G. Average Copies not Distributed: 215.  
Actual No. Copies of Single Issue Published Nearest to Filing Date: 288. H. Average  
Total: 33,051. Actual No. Copies of Single Issue Published Nearest to Filing Date:  
34,203. I. Average Percent Paid and/or Requested Circulation: 99.847%. Actual No.  
Copies of Single Issue Published Nearest to Filing Date: 99.893%. 16. Publication of  
Statement of Ownership will be printed in the Winter 2010 issue of this publica-  
tion. 17. I certify that all information furnished on this form is true and complete:  
(signed) Elizabeth Kibat, Assistant Controller (date) 9/28/10



## **May 28-30**

### **Dr Pepper StarCenter & PSA StarCenter Plano, Texas**

**Entry & Test  
Deadline: March 1**

Back by popular demand, this Memorial Day weekend event offers a prime opportunity to maximize your investment by using your programs and costumes from the skating season. Plus, a trip to Dallas – also known as "Big D" – is a great way to kick off the summer! The motto here is "Live Large. Think Big." The Dallas area is the shopping capital of the U.S. and offers more than 6,000 restaurants, not to mention arts and historic districts, amusement parks, museums and more. And just like ISI events, Dallas is all about both quality and quantity!

More Info:  
[skateisi.org/ConferenceChamps](http://skateisi.org/ConferenceChamps)  
[visitdallas.com](http://visitdallas.com)  
[drpepperstarcenter.com](http://drpepperstarcenter.com)  
[psaplano.org](http://psaplano.org)

**For event details and entry forms...**  
**[skateisi.org/ConferenceChamps](http://skateisi.org/ConferenceChamps)**





# Ice Skating + FUN = 2011 ISI National Events!

**It All Adds Up to Skating for the FUN of It!**

**Six competitions, six locations — unlimited opportunities!**

It's a no-brainer! ISI skaters have the most opportunities to compete in a wide variety of events and in a fun, welcoming environment.

## **February 11-13**

St. Peters Rec-Plex  
St. Peters, MO

Entry & Test  
Deadline:  
December 1



## **April 8-10**

The Edge Ice Arenas  
Bensenville, IL

Entry Deadline:  
February 1



## **May 28-30**

Dr Pepper StarCenter  
& PSA StarCenter  
Plano, TX

Entry & Test  
Deadline:  
March 1



## **July 25-30**

Schwan Super Rink  
Blaine, MN

Entry & Test  
Deadline:  
May 1



## **Sept. 30-Oct. 2**

Tampa Bay Skating  
Academy-Oldsmar  
Oldsmar, FL

Entry & Test  
Deadline:  
August 15



## **December 2-4**

Pickwick Ice Skating  
Center  
Burbank, CA

Entry & Test  
Deadline:  
October 15



**Go to [skateisi.org](http://skateisi.org) for entry forms and additional event details.**

