

recreational **IceSkating**

Spring 2011

**Champions
Who Started
with ISI**

Alissa Czisny,
2011 U.S.
National Champion

**Are You On
Top of This
Worlds?**

Join Us at the Country's
Largest Indoor Ice
Skating Facility!

**Competition
Photo Galleries**



ROCK

Spring's hottest
colors with ZÜCA!

SPECIAL OFFER!

FREE ZÜCA Seat Cushion of your choice, with any purchase of \$135 or more from the ZÜCA Sports Collection.

.....

This offer can only be redeemed

BY CALLING: 1800.799.6548

OFFER CODE: ISISPRING

VALID THROUGH: 06/30/2011

One gift per customer please, while supplies last.
Free standard shipping within the 48 contiguous U.S.



***Seat Cushions are reversible and padded for added comfort!



The Ultimate Carry-All for Sports!



Flowerz



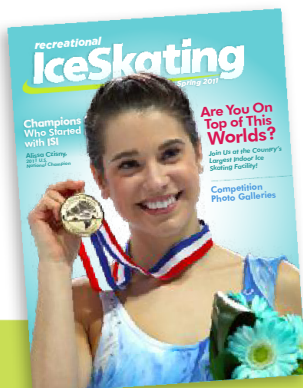
Pink Hot



Spotz



Rebel



what's inside

2011 U.S. National Champion
Alissa Czisny
Paul Harvath, U.S. Figure Skating

Recreational Ice Skating | Spring 2011/Vol. 35, Number 2

Publisher
Ice Skating Institute

Editor
Lori Fairchild

Editorial Advisors
Peter Martell
Randy Winship
Sean Flynn

**Print Production &
Advertising/Sponsorship
Manager**
Carol Jackson

Graphic Designer
Dallas Drotz

Recreational Ice Skating ISSN 0164-4106 (USPS 361-570) is published quarterly; Fall, Winter, Spring, and Summer; by the Ice Skating Institute, 6000 Custer Rd., Bldg. 9, Plano, TX 75023. Annual Subscription Rate is \$12.00 per year. Periodicals postage paid at Plano, TX, and at additional mailing offices. POSTMASTER: Send address changes to Recreational Ice Skating, 6000 Custer Rd., Bldg. 9, Plano, TX 75023. Printed in the U.S.A.

Address Subscription Requests to Recreational Ice Skating, 6000 Custer Rd., Bldg. 9, Plano, TX 75023. Extra copies are \$4.00 each (includes postage).

©2011 by the Ice Skating Institute. Reproduction in whole or in part is prohibited unless expressly authorized in writing by publisher. All rights reserved. Opinions expressed by contributors do not necessarily represent the views of the Ice Skating Institute, the publisher or the advertisers. Submissions of manuscripts, materials, photographs, and artwork are made at mailer's risk and must include self-addressed envelope with sufficient postage for return. No responsibility will be assumed for unsolicited materials. ISI reserves the right to edit material submitted for content and space consideration.

► features

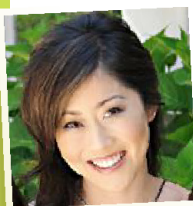


Are You On Top of This Worlds? 10

ISI Winter Classic Results. 14



ISI Winter Classic Gallery 16



Kristi Yamaguchi Shares Skating Dreams Through New Children's Book 18

ISI Artistic Challenge Results 23

ISI Artistic Challenge Gallery 24

► departments

News & Notes 4

Competitors' Corner 20

Focus On Spotlight 22

weSKATE Kids Adventures
& Activities. 26

Calendar 28



*Dedicated to providing leadership,
education and services to the
ice skating industry.*

ICE SKATING INSTITUTE

6000 Custer Rd., Bldg. 9
Plano, TX 75023
Phone: (972) 735-8800
Fax: (972) 735-8815
e-mail: isi@skateisi.org
www.skateisi.org

**ISI INTERNATIONAL
HEADQUARTERS**

Executive Director

Peter Martell

Director of Skating

Programs & Events

Randy Winship

Director of Management

Programs & Services

Sean Flynn

Controller

Donna Crooks

Assistant Controller

Elizabeth Kibat

Membership Coordinator

Mary Ann Mangano

**Print Production & Advertising/
Sponsorship Manager**

Carol Jackson

Information Services Coordinator

Jeff Anderson

Administrative Assistant

Angela Tooley

ISI OFFICERS

| | |
|--------------------------|---------------|
| President | Jim Hartnett |
| 1st Vice President | Mike Paikin |
| 2nd Vice President | Janice Forbes |
| Treasurer | Rob McBride |
| Secretary | Margy Bennett |
| Immediate Past President | Jim Lange |

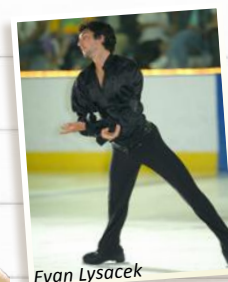
DIRECTORS

| | |
|-----------------------------------|--------------------------|
| District 1 | Tiesha Potvin-Coale |
| District 2 | Robyn Bentley |
| District 3 | Lisa Fedick |
| District 4 | Christine Wilson Brinton |
| District 5 | Larry LaBorde |
| District 6 | Jodi Truel |
| District 7 | Jamie Baringer |
| District 8 | Susan D'Aquila |
| District 9 | Bridgid LaMear |
| District 10 | Jane Schaber |
| District 11 | John Kanicka |
| District 12 | Debbie Lane |
| District 13 | Allison Miller |
| District 14 | Paige Scott |
| District 15 | Bert Blanchette |
| District 16 | Cindy Solberg |
| District 18 | Glyn Jones |
| Hockey | Dan Smith |
| Builders & Suppliers | Doug Peters |
| Instructors | David Santee |
| Commercial Facilities | Liz Mangelsdorf |
| Public/Not-for-Profit Facilities | Sara Bolan |
| Schools/Colleges/ Universities | Alane Swiderski |
| iAIM Chair | Kevin McCormack |
| PSA Representative | Gerry Lane |
| USFSA Representative | Homer Hagedorn |
| ISIA Asia Representative | Paul Wong |
| AMMA Representative | Trudy Ivory |
| MIAMA Representative | Dean Mulso |
| MIRMA Representative | Judy Sniffen |
| Education Foundation | Don Bartelson |
| Lifetime Honorary Member | Carol Zdziebko |

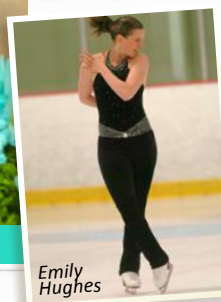
► news & notes



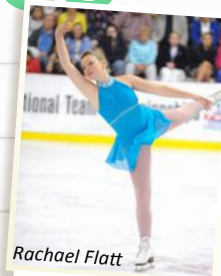
Paul Harvath, U.S. Figure Skating



Evan Lysacek



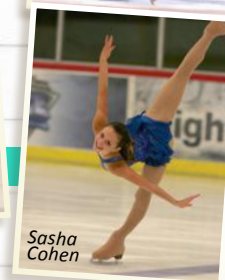
Emily Hughes



Rachael Flatt



Mirai Nagasu



Sasha Cohen

ON THE COVER

Alissa Czisny Joins Ranks of Former ISI Skaters Who Rose to the Top

Congratulations to Alissa Czisny, the most recent U.S. National Champion who got her start in the ISI recreational ice skating program.

Dorothy Hamill was the first former ISI skater to advance to the national championship title, which she held from 1974 through 1976. She went on to take gold at the 1976 Winter Olympics in Innsbruck, Austria and again at that year's World Figure Skating Championships.

Since then, many ISI skaters have reached the elite competitive ranks, including:

- Kristi Yamaguchi, 1992 Olympic champion
- Michelle Kwan, two-time Olympic medalist and most decorated figure skater in U.S. history
- Sarah Hughes, 2002 Olympic champion
- Sasha Cohen, 2006 Olympic silver medalist
- Emily Hughes, 2006 Olympian
- Evan Lysacek, 2010 Olympic champion
- Rachael Flatt, 2010 Olympian
- Mirai Nagasu, 2010 Olympian

Most of these skating champions have been featured in ISIA Education Foundation Benefit on Ice shows at the annual ISI World Recreational Team Championships. This year's guest skater will be announced soon.

The Ice Skating Institute is proud of its long and successful track record of providing a recreational ice skating program for skaters of all skill levels and aspirations. Everyone can be a champion in the ISI program!

Skate-A-Thon Raises \$1,500 for Juvenile Diabetes Research



The Glenview Blades, an ISI synchronized skating team in Glenview, Ill., raised \$1,500 for the Juvenile Diabetes Research Foundation with its annual Skate-A-Thon.

Each year the team designates a portion of its fundraising efforts to a charity chosen by the

skaters. Team member Alyssa Manno, who is herself diabetic, presented the check, saying: "The Skate-A-Thon provides a great opportunity for families, friends and neighbors to support the Blades, an organization that teaches us many wonderful values, including sportsmanship, teamwork and the value of hard work. In addition, every year at least 10 percent of proceeds go to a deserving charity. This year we selected the Juvenile Diabetes Research Foundation, which is driven by a single mission: to find a cure for diabetes and its complications through the support of research. JDRF is also committed to developing new and better treatments that improve the lives of people with diabetes in the near term and keep them healthy while they advance toward a cure."



TBSA Countryside Skaters Featured in Busch Gardens Holiday Show

Allie White (left), age 7, FS 3, and Nicole Tutak, age 8, FS 4, were featured in the Christmas on Ice Show at Busch Gardens in Tampa, Fla. The two skaters, both from Tampa Bay Skating Academy-Countryside, shared the role of the little girl in the professional production, and each performed in more than 50 shows during its Nov. 20-Jan. 2 run.

SP-Teri 



ZERO GRAVITY LICENSE TO FLY

The latest light weight skating boots.

Standard Features:

V notch for optimal ankle flex.
Low cut back for ideal toe pointing and better Achilles comfort.
Cushioned insole for shock absorption with anti friction top cover.
Suede synthetic lining to wick moisture from feet and ankle comfort.

Available at a SP-Teri dealer near you.

SP-Teri Co., Inc. 436 North Canal Street, Unit 1 • South San Francisco, CA 94080
Phone (650) 871-1715 • Fax (650) 871-9062 • www.spteri.com

► news & notes

Skate for Hope Team Seeks More Members

Six ISI members who met at the Adult Championships in Las Vegas have formed a Skate for Hope team to raise funds for breast cancer research, awareness and education.

Skate for Hope is a nonprofit organization founded by a breast cancer survivor who credits figure skating and her skating friends with her positive attitude throughout her treatment process.

"Our team went to Las Vegas in February and worked on our choreography with Vassili Mourzine," said Becky Langford, a member of the Santa Fe Skating Club. "We are skating to 'Unwritten' by Natasha Bedingfield. We plan to meet



Skate for Hope team members (from left) Samantha Matthews, Becky Langford, Carrie Keohane, Stacey Strokova, Angie Miske and Nicole Padberg

again in late March or late May. We would like to get more skaters to join us."

The Skate for Hope show will take place on Saturday, June 18 at the Nationwide Arena in downtown Columbus, Ohio.

Olympic, world and national skating champions such as Johnny Weir, Rachael Flatt and Emily Hughes will join the cast to present a spectacular show. Proceeds will benefit the Stefanie Spielman Fund at the James Cancer Center and Solove Research Institute and the Vera Bradley Foundation for Breast Cancer Research.

For more information, go to skateforhope.org.

2011 MIAMI UNIVERSITY summer skating camps

Elite Synchronized Skating Camp

- July 10-15, 2011

Figure Skating Camps

- July 17-22, 2011

- July 24-29, 2011

ISI Testing each week & USFS Test Session July 29 & 30

Synchronized Skating Camp

- August 1-6, 2011

FOR MORE INFORMATION & APPLICATIONS VISIT:

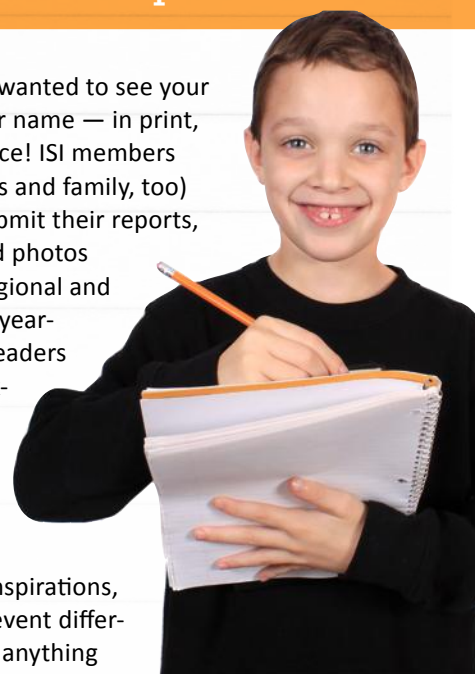
www.ice.muohio.edu

GOGGIN ICE CENTER

513-529-9803

WANTED: ISI Event Correspondents

If you've always wanted to see your work — and your name — in print, here's your chance! ISI members (and their friends and family, too) are invited to submit their reports, observations and photos from ISI local, regional and national events, year-round. Tell our readers all about your experience at the event, what you saw and heard, highlights, behind-the-scenes stories, inspirations, what made the event different or special — anything you want to report, and the more detail, the better! We'll feature the best reports in this magazine and on our website throughout the year. This will be an ongoing editorial department. Send your event reports and photos to editor@skateisi.org.





Summer of Excellence

2011 TRAINING CAMP

JUNE 13-JULY 29, 2011 • LOS ANGELES, CALIFORNIA



HOME OF OLYMPIC AND WORLD CHAMPION EVAN LYSACEK



COMPLETE ON AND OFF ICE TRAINING:

- Moves in the Field
- Freestyle Technique
- Dance
- Acting on Ice
- Power Skating
- Choreography
- Conditioning
- Fitness Center



FEATURING:



2-Time US Olympic Team Coach, PSA & USFS Coach of the Year
Audrey Weisiger*

*For Limited Engagement



US Olympic Silver Medalist, US Figure Skating Hall of Fame
Paul Wylie*



World Champion, Olympic & World Coach & Choreographer
Yuka Sato*

Olympic, World & National Coaching Staff INCLUDING:



World Medalist
Tiffany Chin



World Team Coach
Ken Congemi



World & Olympic Coach
Christa Fassi



World Team
Bebe Liang

WORLD CLASS TWIN RINK FACILITY

Minutes from Los Angeles International Airport and Southern California beaches and attractions
Check our web site for our host hotels, including neighboring Hilton Garden Inn

STEP UP TO THE NEXT LEVEL

Introductory Training Camp 101 August 1-5, 2011

310.535.4400 • summercamp@ToyotaSportsCenter.com • www.ToyotaSportsCenter.com

► news & notes



Skating Director Gets Extreme Office Makeover

Linda Barnard Monney, skating director at Piney Orchard Ice Arena in Odenton, Md., had a surprise waiting for her when she returned to her rink from her vacation and birthday trip.

"When I returned on an early Saturday morning, there was a poster-size birthday card hanging on my office door welcoming me back. I was touched, and commented that someone had painted my old door," she says.

"To my unbelievable surprise, I entered a beautiful, totally new office! The room had been completely emptied and replaced with new carpet and furniture, trophies displayed, plaques mounted on the wall and new curtains on the bright, clean windows."

While she was gone, parents and students from her team performed an "extreme makeover" on her 20-year-old office, which had become a repository for old files, hula hoops, camp crafts, lost and found items, etc.

"I was totally shocked and will never forget the big smiles on everyone's faces as they waited for my reaction. I was speechless and awestruck," she recalls.

She learned that board members from her ISI team had masterminded the project, with paint and carpet funds provided by rink manager Gary Cremen.

"One of the best things about skating is the friendships that develop and the camaraderie created by working together to achieve goals and support one another," Linda notes. "My extreme office makeover is definitely an example of all of that, and I am most privileged to be a part of the Piney Orchard ISI team."

Be the Face of Your Favorite ISI National Event!

Have you competed in any of ISI's national events in the past three years: Winter Classic, Synchronized Championships, Conference Championships, Worlds, Adult Championships or Artistic Challenge? We are looking for ISI members of all ages and skating levels to provide testimonials about each event for future event advertising and promotion. Tell us in 250 words or less what you liked best about the event, and why you recommend it to other skaters. Then email it, along with a photo of yourself, to editor@skateisi.org. The deadline for submissions is June 15.



How Do You Display Your ISI Test Badges?

Collecting test badges is one of the benefits of the ISI program. How do you display yours? On a sweater or jacket? In a shadow box or frame? Do you have a clever and creative idea for a badge collection? Send us a photo of you with your ISI test badges, plus your ideas to share with other readers, and you might see yourself in a future issue of this magazine!





Beat the heat!

Experience the Northbrook Sports Center 2011 Summer Training Program!



Monday, June 6 through Saturday, August 20

Enjoy fantastic freestyle ice for all ages and levels.

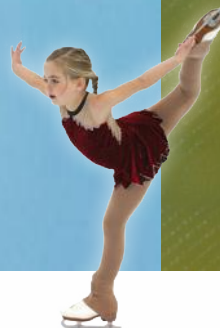
Rent our dance rooms for your off-ice conditioning needs.

Monday-Friday

| | |
|---------------|--------------|
| 6-6:30am | Noon-12:30pm |
| 6:30-7am | 12:40-1:10pm |
| 7-7:30am | 1:10-1:40pm |
| 7:30-8am | 1:50-2:20pm |
| 8-8:30am | 2:20-2:50pm |
| 8:30-9am | 3-3:30pm |
| 9:10-9:40am | 3:30-4pm |
| 9:40-10:10am | 4:10-4:40pm |
| 10:20-10:50am | 4:40-5:10pm |
| 10:50-11:20am | 5:10-5:40pm |
| 11:30am-Noon | 5:40-6:10pm |

Saturday

| |
|---------------|
| 7-7:30am |
| 7:30-8am |
| 8-8:30am |
| 8:40-9:10am |
| 9:10-9:40am |
| 9:50-10:20am |
| 10:20-10:50am |
| 11-11:30am |
| 11:30am-Noon |



Join Us:

Prepare for U.S. Figure Skating testing:
Moves in the Field and Free Skating.

**Save the date:
August 19**

Enjoy our Summer Recital at 6pm, followed by cake and refreshments.



Registration information is available at nbparks.org after March 1.
If you have questions, call us at 847-291-2993.

Northbrook Sports Center | 1730 Pfingsten Road, Northbrook, IL 60062



Are You On Top of This Worlds?

by Lori Fairchild



It's time to make plans for the 2011 ISI World Recreational Team Championships. The entry and test deadline is May 1, which gives you much of the summer to work on your programs. And best of all, it gives you plenty of time to get excited about all that Worlds has to offer. Worlds is ISI's premier annual event — a true skating extravaganza for tots to senior adults, individuals and groups both large and small. There's nothing else like it anywhere, so head to Blaine, Minn. July 25-30 for a healthy dose of "Minnesota N'ice"!



The Super Rink

This year will mark the third time ISI Worlds has been hosted at the Schwan Super Rink, the largest ice arena of its kind in the country. Since 2004 when Worlds was last held here, the Super Rink has nearly doubled in size, to an incredible eight sheets of ice under one roof. The Super Rink is also home to the Hat Trick Café and gallery overlooking four of the sheets, 32 oversized locker rooms, a pro shop and much more. The Super Rink is part of the National Sports Center, one of the largest amateur sports complexes in the world, with a place in the *Guinness World Records*.



The Shopping

The Minneapolis area boasts the largest shopping and entertainment complex in the United States, the Mall of America. Seven Yankee Stadiums would fit inside this amazing facility! Besides its 520 stores and 50 restaurants, you'll find the Nickelodeon Universe theme park, Moose Mountain Adventure Golf, the world's largest underground aquarium, A.C.E.S. Flight Simulation and much more. There's lots of other shopping in the area, too, including the trendy Block E in downtown Minneapolis and Northtown Mall in Blaine.



Play the Night Away at the Competitors' Party!

Three hours of food, fun and friendship at Brunswick Zone XL, exclusively for ISI Worlds participants and their families!

Enjoy a tasty dinner buffet with something to please every palate, then have a ball on the bowling lanes, in the arcade, in the bumper cars, playing laser tag and dancing to the DJ's tunes.

Be sure to order your tickets from the ISI office before July 15 for advance reservations plus a \$5 savings.

Advance ticket (by July 15): \$20 per person

At the door: \$25 per person



**Wednesday,
July 27, 7-10 p.m.**

Brunswick Zone XL
11351 Ulysses Street NE
Blaine, Minn. 55434



Brunswick Zone XL Competitors' Party includes:

- Dinner buffet
- 3 hours arcade play
- 1 session laser tag
- 1 hour bowling (shoes incl.)
- 1 round bumper cars
- DJ, dancing & games

of Advance Tickets _____ X \$20

PAYMENT TYPE (circle one) Check VISA MasterCard Discover TOTAL \$ _____

Credit card number _____ Exp. Date _____

Name on Card (please print) _____

Credit Card Billing Address _____

Cardholder Signature _____ Phone _____

(OPTIONAL) ISIA Education Foundation Donation (tax deductible IRS# 36-3638131) \$ _____

*Advance ticket orders must be received in the ISI office by July 15.
Please pick up your tickets at the ISI Worlds registration desk.*



The Special Activities

In addition to all the exciting skating events ... making new friends from all over the country and beyond ... trading pins ... sightseeing ... we also have fun social activities and entertainment planned for your Worlds week.

Tuesday is Dollar Days at Running Aces Harness Park, where you and your family will enjoy free admission plus dollar concessions.

Wednesday is the Worlds opening ceremony and parade followed by the competitors' party at Brunswick Zone XL, where you'll enjoy a dinner buffet, bowling, laser tag, bumper cars, arcade games and dancing to the DJ's tunes (see page 11 for details and advance tickets).

Get ready to make a splash on Thursday at Bunker Beach water park, with six water slides, a lazy river, a pool with climbing wall and Minnesota's largest outdoor wave pool!

And finally, Friday brings the annual ISIA Education Foundation Benefit on Ice Show, featuring selected competitors from the Worlds competition plus a soon-to-be-announced guest skating star (see page 13 for information and tickets).

The Natural Beauty

Minnesota is known as "The Land of 10,000 Lakes" and Minneapolis means "City of Lakes." You can even canoe nearly two miles through the "Chain of Lakes" near downtown! Minneapolis has one of the best park systems in the country, with more than 180 park and nature properties within the city limits. It's a great vacation destination for ISI skating teams and families!



Photo Courtesy: Meet Minneapolis

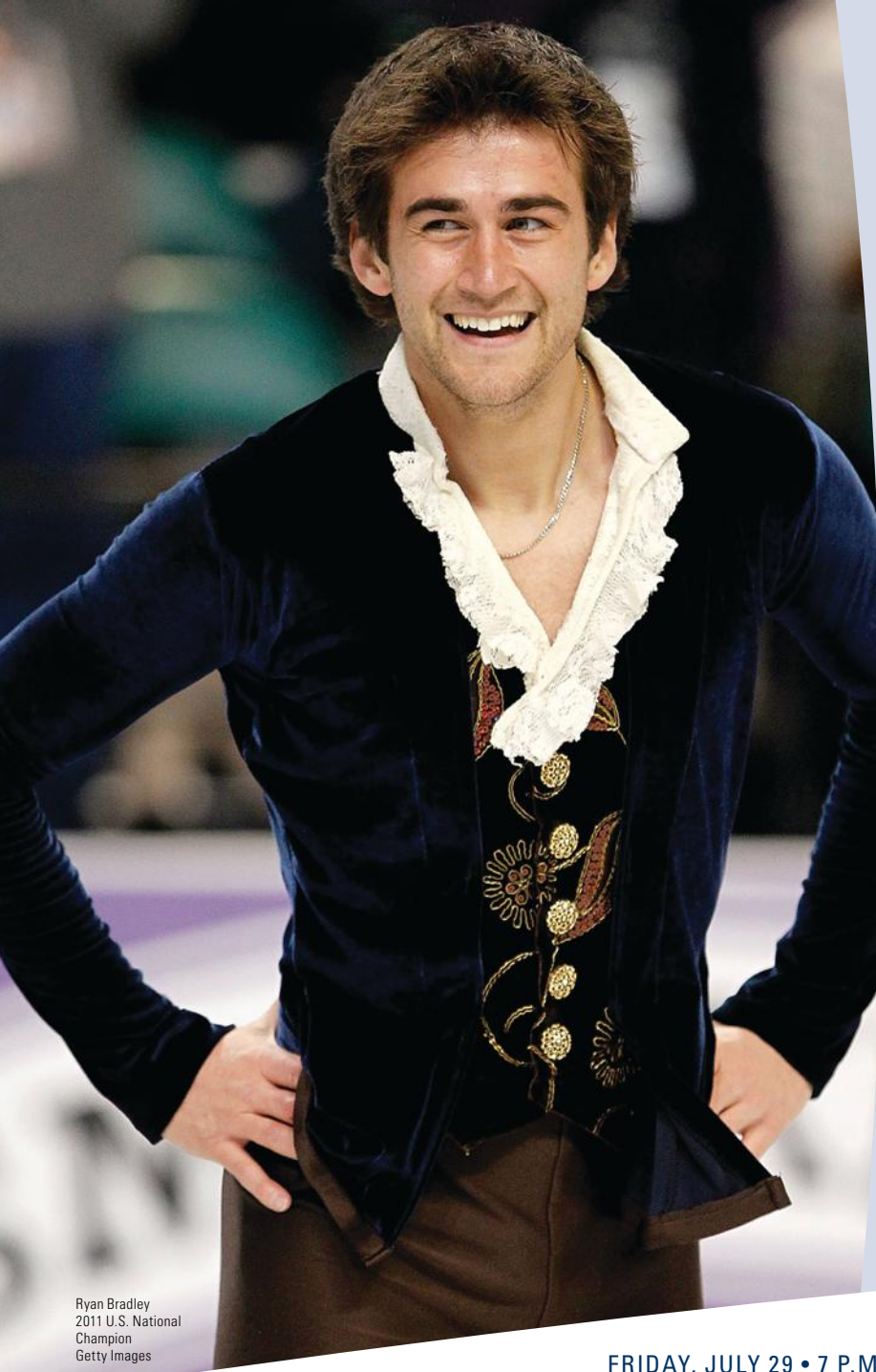
More Info

skateisi.org/worlds
minneapolis.org
ci.blaine.mn.us
nscsports.org

The Travel Plans

Great news for travelers: Minneapolis-St. Paul International Airport has been ranked as one of the best large airports in the U.S. and the world in customer satisfaction surveys. Schwan Super Rink is conveniently located just 25 minutes north of both Minneapolis St. Paul, and all of the team-friendly hotels offering special ISI Worlds event rates are within 30 minutes of the rink.

For more event and hotel information as well as entry forms, go to skateisi.org/worlds.



Ryan Bradley
2011 U.S. National
Champion
Getty Images

Don't Miss **Benefit on Ice**

Starring Ryan Bradley

**Reserve your seat now for
the highlight of Worlds week!**

The ISIA Education Foundation is pleased to present Ryan Bradley, 2011 U.S. national champion, as the featured skater at this year's Benefit on Ice Show. Besides having the unique opportunity to see a live performance by a national champion, you'll also get to meet Ryan after the show during an autograph session!

The Benefit Show scouting team will be observing Worlds competitors at all levels throughout the week, selecting participants to join in the Friday night ice skating extravaganza.

Be sure to buy your Skate with the Stars raffle tickets (\$5 each, or five for \$20) at Worlds for an extra chance to perform in the show. The lucky drawing winners will be announced at the Competitors' Party on Wednesday.

If you're selected, you'll have the unique privilege of sharing the program spotlight with ISI peers as well as Ryan Bradley.

Whether you're on the ice or in the stands, this year's Benefit on Ice will be an evening you won't forget!

FRIDAY, JULY 29 • 7 P.M. • FOGERTY ARENA • BLAINE, MINN.

Seating is limited. Reserve your tickets now!

\$20 before July 15, **\$25** at Worlds registration prior to Benefit Show (if not sold out),
\$15 group sales (10 or more tickets through the ISI office prior to July 15)



Payment Method:

- ☐ Check/Money Order*
☐ VISA
☐ MasterCard
☐ Discover

Make checks payable to
Ice Skating Institute.
Mail form and payment to:
ISI-Events
6000 Custer Rd., Building 9
Plano, TX 75023

Number of tickets _____ Total \$ _____

Name for ticket pickup at registration _____

Credit card # _____ Exp. Date _____

Billing address _____

Cardholder's name _____ Telephone (required) _____

Signature _____



Winter Classic Host & Champion St. Peters Rec-Plex Sets Production Team Record

Nearly 800 skaters, along with their coaches and families, spent the weekend before Valentine's Day in St. Louis at a sweetheart of a competition — the 2011 ISI Winter Classic. The participants traveled from 11 states and Mexico to enjoy the fantastic amenities and friendly Midwestern hospitality at St. Peters Rec-Plex.

The local organizing committee — under the leadership of the Rec-Plex's Laura Lindsey, Phil Boettge and Heather Hyatt — set the stage for an organized and fun competition that spanned 70 hours of events on three rinks. Participants in the first-ever Winter Classic Pool Party made a splash in the Rec-Plex's indoor swimming center.

"We had a great time hosting the Winter Classic," said Boettge.

"It was gratifying to see that all the time and preparation paid off in the end when the event ran smoothly. Hosting a national event is a rewarding experience. It would not be possible without the help from skaters, parents, volunteers, staff and

other city departments. I think it was a growing experience for everyone involved to work together toward a common goal. Our giant production team was also a valuable team-building experience for our coaching staff."

The home team not only won the Robert Unger Trophy as the overall team champion; the Rec-Plex also set a new ISI record for the largest-ever production team entry. With 142 skaters "Traveling Through St. Louis," it was clear that the locals really love their home teams — and their city history, too! There was something for everyone in that number, as well as "extras" roles for the non-skaters (in skates), who made great fans in the grandstand at center ice.

The spirit of St. Louis and the winning team is a true representation of ISI sportsmanship and camaraderie. Meet us in St.

Louis again for the 2012 Synchronized Championships!

Next year's Winter Classic goes to Chicago — join us Feb. 17-19 at Northbrook Sports Center.



TOP 10

| PLACE | TEAM | TOTAL POINTS |
|-------|-------------------------------------|--------------|
| 1 | St. Peters Rec-Plex | 2209.5 |
| 2 | Apple Valley Sports Arena | 587.5 |
| 3 | Line Creek Ice Arena | 488.0 |
| 4 | Edge Ice Center | 447.0 |
| 5 | Webster Groves Ice Arena | 285.5 |
| 6 | Arkansas Figure Skating Association | 259.0 |
| 7 | Washington Park Ice Arena | 224.5 |
| 8 | Sun City Blades | 218.5 |
| 8 | Brentwood Ice Arena | 218.5 |
| 10 | Saddle & Cycle Club | 186.0 |

Robert Unger Trophy: St. Peters Rec-Plex
President's Award: Arkansas Figure Skating Association
Board of Directors Award: Sun City Blades
Percentage Award: Saddle & Cycle Club

Having the Winter Classic at my home rink was so incredible! Not only was it one of the most amazing competitions I've been to, it was just so memorable. I actually came in last in all my solo events, but that was OK because it was so great to come together and see skaters who hadn't competed individually in years put together programs again. The best part of the weekend was definitely our record-breaking production team. Being a part of the whole family was something I'll never forget.

—Marie Feely, 18, FS 4, St. Peters Rec-Plex



I had a blast competing at the Winter Classic in St. Louis. It's always a pleasure to go to ISI national events. What I love is the family of ISI skaters I have made. Young and old, we are all there to have fun, support each other and show our pure love and joy for the sport.

—Angie Miske, Adult Silver, Stephen C. West Ice Arena, Breckenridge, Colo.

I had so much fun at the Winter Classic in St. Louis because I got to see many of my skating friends from other rinks and meet new skaters from all over the country. My favorite part is dressing up in costume and having a good time on the ice!

—Peyton Wiewel, 9, Line Creek Ice Arena, Kansas City, Mo.



We were first time participants in an ISI national event and had a wonderful time skating and volunteering together at Winter Classic. We both enjoy figure skating for physical fitness, fun and camaraderie. We skated in a total of 12 events of various types, including the largest production team to date, "Traveling Through St. Louis." The highlight of our Winter Classic experience was our Family Spotlight event. Inspired by this year's theme, "Best of Broadway," we skated together to the show tune "My Favorite Things" from the 1959 musical The Sound of Music.

—Leslie (Adult FS 4) and Allysen (14, Gamma) Meriwether, St. Peters Rec-Plex, St. Charles, Mo.

The 30 skaters (some of whom had never competed before) and two coaches from the Icettes High School Figure Skating team in Apple Valley, Minn. had a fantastic time at the 2011 Winter Classic. There were many highlights from the weekend, all punctuated by our never-ending team cheers echoing throughout the rinks (if you were there, you heard them!). Our favorite moments included: laughing with our teammates as they kicked balloons or missed the cones with their hockey "pucks" in our Team Surprise events; cheering on our four Team Compulsories early Sunday morning, after a 6:30 a.m. practice; enjoying the 60-plus degree weather; skating as one in the first-place large production team; winning the second overall team points trophy; and finally, witnessing the Rec-Plex Skating School smash an ISI record for the largest production team, with an amazing performance of "Traveling Through St. Louis." It was truly a great weekend that we will always remember! Thank you ISI and St. Peters Rec-Plex!



—Icettes, Apple Valley Sports Arena, Minnesota



We flew from Aliso Viejo Ice Palace in California to the Winter Classic. We had a super time! We both have lots of family in St. Louis, and they all came to see us compete in the Jump & Spin together. We met up with an ISI coach in St. Louis, Debi Kozak, and she coached us both in several events. It was cool to be featured in the front of the program book as one of the teams that traveled the greatest distance to this ISI competition. We've especially enjoyed showing off our medals, since they feature a special design with the St. Louis Arch, and you could only get one by competing in a Winter Classic event. We hope to team up again in Chicago for the 2012 Winter Classic! —Elizabeth Anne Johnson and Megan Winkelmann, Aliso Viejo Ice Palace, California



2011 ISI WINTER

Professional On-Ice Photography by ActionPhotos.com



CLASSIC GALLERY



Kristi Yamaguchi Shares Skating Dreams Through New Children's Book

by Lori Fairchild

Olympic champion Kristi Yamaguchi says her new children's picture book, *Dream Big, Little Pig!*, is an extension of her motto: "Always Dream."

"This motto has served as my personal inspiration for many years," Kristi says. "It is my constant reminder to dream big, never lose sight of my goals and strive to become a better person. This book represents my desire to share that with children everywhere."

Geared to children ages 4 to 8, *Dream Big, Little Pig!* follows Poppy the pig's quest for fulfillment as she explores her dreams of stardom, ranging from ballet to singing to modeling. Her loving family supports her in each of her endeavors, but it isn't until she discovers the magic of ice skating that she finally finds her dreams coming true.

But even ice skating doesn't come naturally to Poppy. She isn't particularly graceful, and she stumbles and falls, over and over. It is her persistence and her love of the ice that lead to her eventual success.

Kristi says that, like Poppy, she had to work hard to learn to skate. "I would not say I was a natural, at all," she recalls. "I was small for my age, and very shy and timid. My mom still says that the other kids seemed to progress faster than I did, but I loved to be out there skating."

Born with club feet, Kristi had worn plaster casts on her legs as a baby, then corrective shoes connected by a brace as a toddler. "When I discovered skating around age 6, my mom asked the pediatrician about it, and he thought it was a great idea and that it would only help me."

Kristi started skating in the ISI program and tested through ISI Freestyle 5 before choosing the competitive path that eventually took her to the Olympic gold.

"Competitive skating isn't for everyone," she notes. "It's nice to have both options available, because skating is an activity that you can enjoy at any age and level. A recreational program is a great way to start in any sport, without so much pressure."

Now the parents of two young daughters — Keara, 7, and Emma, 5 — Kristi and her husband, hockey star Bret Hedican, enjoy watching their girls discover the joy of skating in the ISI program. "They both just passed Alpha and are going into Beta," Kristi says. "It's great for them to have the guidance and instruction to help them improve and learn a certain



Kristi Yamaguchi with daughters Keara and Emma

amount of technique, which adds to the joy of skating. But I don't know if I see them as competitive skaters; right now they're just having fun."

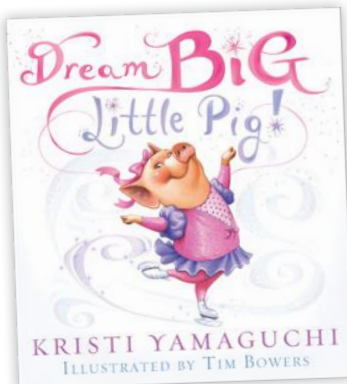
Kristi encourages skaters to keep their ultimate dream in

mind, but to realize that reaching it is a series of smaller goals. "Creating small milestones for yourself to achieve helps you feel like you're accomplishing something and helps you keep a positive attitude. In skating, there's always something new to learn. It's almost impossible to reach perfection, so if you're always striving to improve and learn, you always feel there's a challenge in front of you."

"No matter who you are and no matter how much talent you have, you are going to face challenges," she adds. "When things come too easily, you don't learn to work for them."

Kristi's Always Dream Foundation, founded in 1996, has been an active fundraiser and supporter of children's charities in the San Francisco Bay Area and is now working in the field of early literacy, introducing young children to books and reading. Her own daughters played important roles in *Dream Big, Little Pig!*, with Keara choosing the name of the title character, and Emma lending her own name to Poppy's best friend.

There may be more adventures for Poppy in the future, Kristi says. "I wanted Poppy to be a positive and inspiring character, and to show that sometimes you have to try a few different things before you find the right path for you. It's fun to see Poppy become a force of her own, so I'd like to see her try other things, too — to make her mark in skating, but maybe through skating she will experience other new things." **RIS**





Sept. 30 - Oct. 2
Tampa Bay Skating Academy
Oldsmar, Florida

Entry & Test Deadline: Aug. 15

TBSA-Oldsmar, Florida's first twin ice rink, knows the score when it comes to hosting big events. ISI adult skaters will love both the venue and the hot-spot location. Three of the country's top 10 beaches are just minutes away, featuring white "sugar" sand, waterside cafes and brilliant sunsets. If golf is your thing, you won't be disappointed! Tampa Bay was recently named "Top Arts Destination," and offers eclectic indoor and open-air shopping and dining in unique areas like the historic neighborhoods of Ybor City and Hyde Park. Don't miss this last chance of the year for a combination skating and beach getaway!

More Info:
skateisi.org/AdultChamps
visittampabay.com
funleaguegroup.com

For event details and entry forms...
skateisi.org/AdultChamps





competitors' corner

BY RANDY WINSHIP | ISI Director of Skating Programs & Events

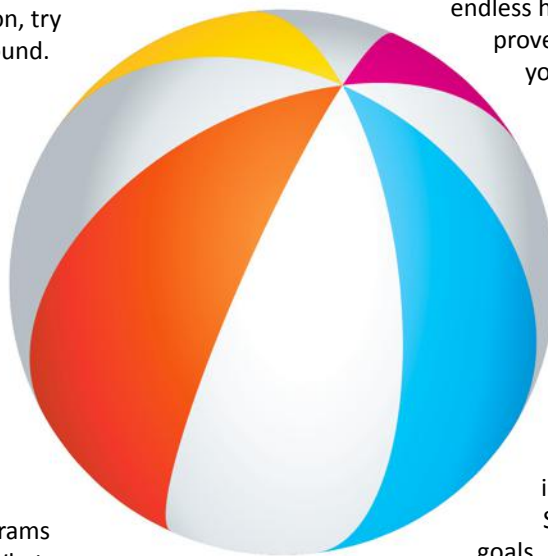
SUN & FUN

Yes, that's right — summer will be here before you know it! What are your plans? Will you go to the beach? Are you planning a family vacation (to Minnesota, of course, for the ISI World Team Championships event)? Or will you stay home and enjoy the “coolest place in town” — your local ice rink?

Whatever you do, at least keep skating in your brain — and in your body, too! If you are not able to skate while you are on vacation, try practicing your jumps on the ground. It can be a great way to train your brain and body to work together, without the glide on the ice.

Do you like to read? Then head over to your local library and check out some skating books. You can read about skating history or famous skater biographies, and there are some great skating theory books, too.

After your body and brain are primed, then you can focus your mind to think of some new programs for the coming skating season. What new music would you like to skate to?



Would that music fit best for a Freestyle program, or maybe Artistic or even a Footwork event? What color should your next costume be? Can you use a current costume and change it by adding a vest, hat or other accessory? Do you have an idea for a new Spotlight program (see *Focus On* article below)?

If you are on the ice, summer is a great time to set your skating goals and expand your boundaries. It's not endless hours of lessons that will help you improve your skating skill, it's the many hours you spend practicing to perfect your maneuvers.

Practice doesn't have to be boring. Skate with your friend and help each other improve a jump or spin. After your warm-up, make up an interpretive program routine to the public session music. Let your friend “judge” your performance. The greater the variety of music you practice with, the wider range of skating you can do when you hear that competition interpretive music selection.

Summer is on its way, so set some goals, have a plan — and have fun! **RS**

High-Level Tests

Congratulations to the following ISI skaters who have recently passed high-level tests:

FREESTYLE 8

Alexa Bouts
Silver Blades FSC

Anna Burke
White Bear Lake Sports Center

Lydia Cogan
Homewood-Flossmoor Ice Arena

Courtney Dziodosz
Franklin Park Ice Arena

Kaitlyn Gaither
Dr Pepper StarCenter
Plano

Paige Halas
Montclair Inside Edge

Hannah Hughes
Edge Ice Center

Rachel Husmann
Homewood-Flossmoor Ice Arena

Audrey Ngo
Dr Pepper StarCenter
Farmers Branch

Ari Pressman
Roseville Skating Center

Sarah Scheller
White Bear Lake Sports Center

FREESTYLE 9

Nathan Grundhofer
Bakersfield Ice Sports Center

Kate Kamish
SportQuest Skating Academy - Parade

Maria Starr
White Bear Lake Ice Arena

COUPLE 8

Blair Mack & Mallory Schindler
Northbrook Sports Center

DANCE 8

Devon Harmon
Ice Chalet

Julia Leix
Center Ice Arena

DANCE 9

Julia Leix
Center Ice Arena

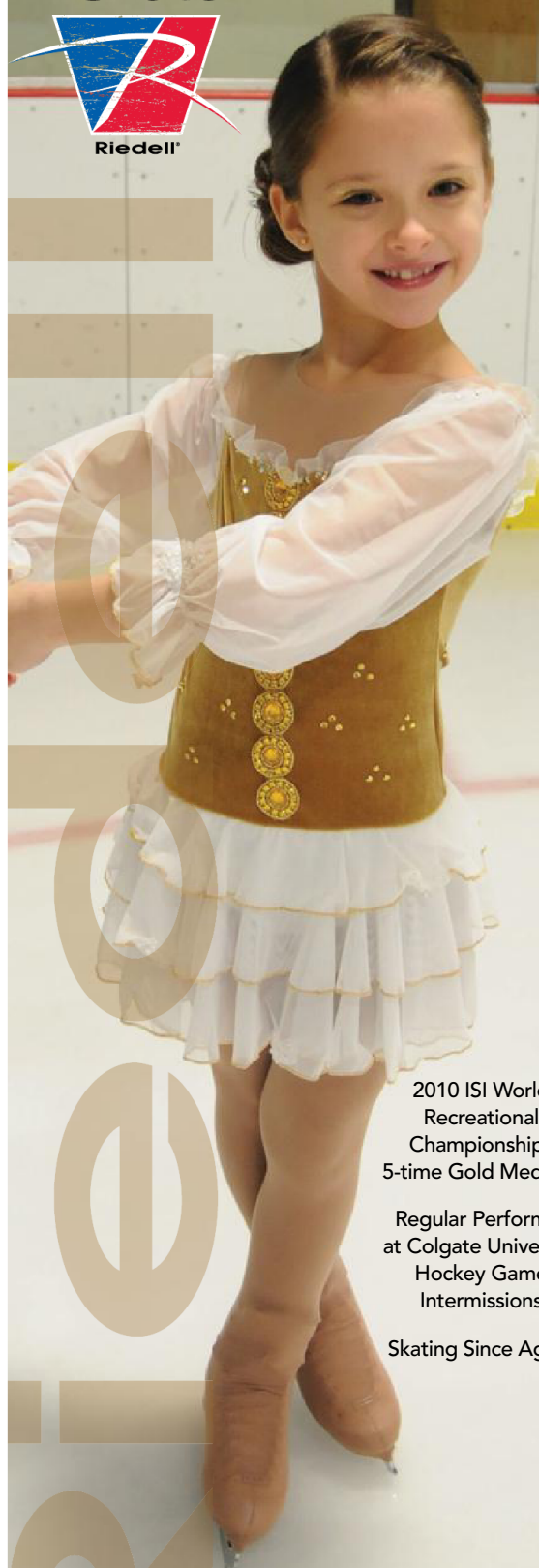
DANCE 10

Sarah Bauguess
Ice Chalet

Isadora Park
First Arena

Hailey Blodgett

i Skate



2010 ISI World
Recreational
Championships
5-time Gold Medalist

Regular Performer
at Colgate University
Hockey Game
Intermissions

Skating Since Age 2

facebook.com/RiedellSkates
iSkateRiedell.com

©2011 Riedell Shoes, Inc.

Focus On



SPOTLIGHT *Lights, Camera, Action!*

Since all ISI recreational competitions are designed for fun, a great place to begin is with Spotlight events.

Who can do Spotlight events: Spotlight events can be done by all ages and all levels. The event groups are usually divided into Character, Dramatic, Light Entertainment and Theme categories. The Theme category changes every calendar year for our ISI national events. You can choose to do 1-2-3 or all 4 of the Spotlight event categories. You must have a different program for each Spotlight event you enter.

Types of Spotlight events: There are several types of Spotlight events including: **Solo Spotlight** (your level is determined by your Pre-Alpha through FS10 test level); **Couples Spotlight** (which you can do with your friend); and even **Family Spotlight** (for two or more skaters in the same family).

Tips for a “winning” program: The main emphasis for all Spotlight programs is on your acting and performance ability — not skating ability. You don’t have to be a great skater to win first place in a Spotlight event since there is no judging score for technical skating maneuvers.

Your costume, prop and choreography must fit the overall theme of your program. The most important thing is to actually *become* your character on ice. If you are Mickey or Minnie Mouse, then be the best skating Mickey or Minnie. If you’re a cowboy, a basketball player or a cheerleader, then get creative when you transform those characters to the ice. It’s always great fun to take off-ice activities — such as ballet, gymnastics or other sports — and try to transform them into an entertaining ice skating routine.

The best thing: The best thing about Spotlight programs is that you can use the same program for more than one test level. You don’t need to get a new program every time your test level changes, so it’s great for Mom and Dad if you can reuse the costume and prop for several competitions throughout the year.

Of course, with your coach’s help and advice, you can always change the choreography in your routine between competitions, as long as you follow the maneuver limitations listed below.

Solo & Couples Spotlight

| LEVEL | DURATION | MANEUVER LIMITATIONS |
|----------------------------------|----------|-----------------------|
| Pre-Alpha - Delta | 1.0 min. | Freestyle 1 and below |
| Freestyle 1-3 / Bronze | 1.5 min. | Freestyle 4 and below |
| Freestyle 4-5 / Silver | 1.5 min. | Freestyle 6 and below |
| Freestyle 6-10 / Gold / Platinum | 2.0 min. | Any maneuvers |
| Family Spotlight | 1.5 min. | Any maneuvers |

Costume and prop limitations: Props are limited to hand-carry items that can be lifted, pushed or carried onto and off of the ice in one trip within 30 seconds. Skaters can have assistance at the ice door to get props on and off the ice. Prop size should be compatible with the skaters’ height and weight.

Judging criteria: Costume and prop, originality, music and choreography, duration and judge appeal (by all three judges). **ISI**



Franklin Park Takes First at 6th Annual Artistic Challenge

The spotlight was on at the Northbrook Sports Center for the 2010 ISI Artistic Challenge in December. The winter wonderland created by the weekend's

snowstorm added to the competition festivities as skaters from near and far participated in the daylong event on two rinks.

Franklin Park Ice Arena was the overall team champion, followed by the University of Illinois and Northbrook Sports Center.

The Skaters' Marketplace vendors were thrilled with the enthusiastic shoppers, who enjoyed the convenience of shopping for skater apparel, equipment and holiday gifts between competition events.

The spacious, well-equipped and centrally located Northbrook Sports Center is a favorite destination for ISI national events. In fact, the facility will host the 2012 Winter Classic, too.

The 2011 Artistic Challenge, set for Dec. 2-4, returns to Pickwick Ice Skating Center in Burbank, Calif., which was the site of the largest Artistic event to date. Hope to see you there! **RIS**



Franklin Park Fusion members represent a portion of Franklin Park Ice Arena's Artistic Challenge team, which took top honors at the 2010 competition in Northbrook, Ill. Franklin Park was also the 2007 ISI Worlds team champion.

TOP 5



| PLACE | TEAM | TOTAL POINTS |
|-------|--------------------------|--------------|
| 1 | Franklin Park Ice Arena | 255.0 |
| 2 | University of Illinois | 217.5 |
| 3 | Northbrook Sports Center | 145.5 |
| 4 | The Edge Ice Arenas | 136.5 |
| 5 | Pepsi Ice Center | 117.0 |

For complete list of teams and results, go to skateisi.org/artistic.

New!
Lace - Bite Pads with Sleeve
 from SkatingSafe
Less Expensive and Most Convenient
Pad on the market!





(2 X Lace - Bite Pad & 2 X Retention Sleeves)
 Item # HP 8004
SkatingSafe, Inc.
 Call (888) 299-2553 or visit www.SkatingSafe.com

ICE SKATING WITHOUT THE ICE

Can be used on any smooth surface indoors or out
 Behaves like an ice skate blade

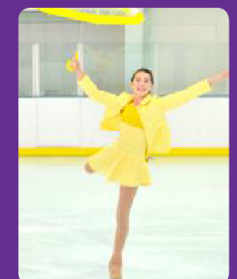
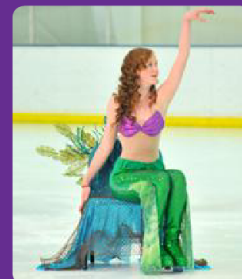
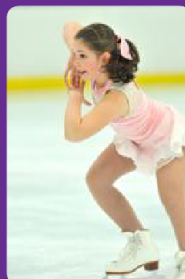
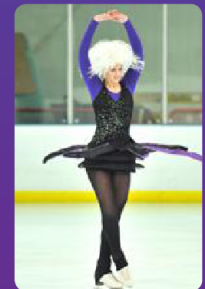
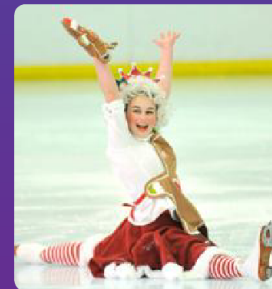
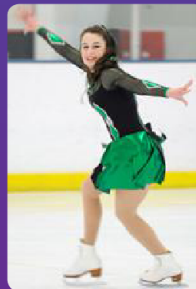
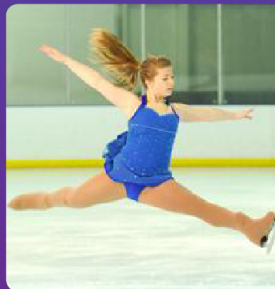
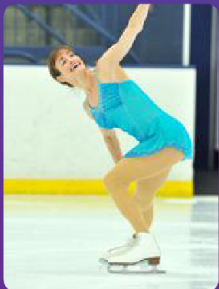
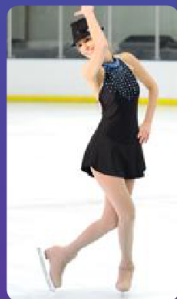
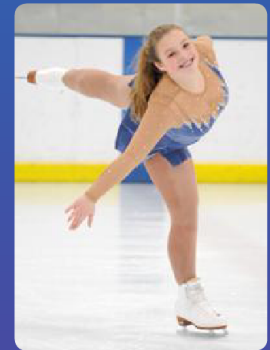
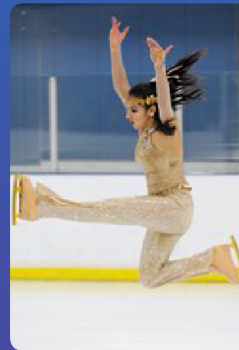
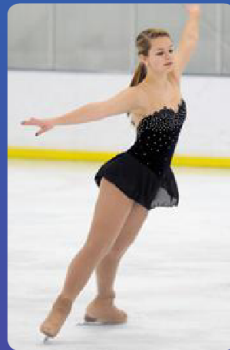
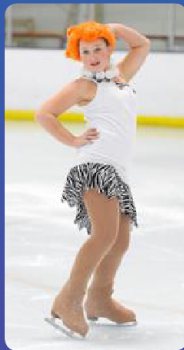
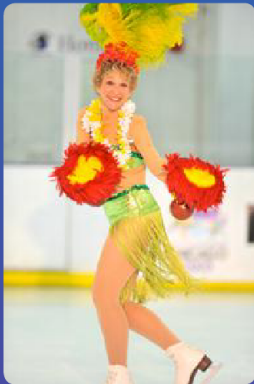
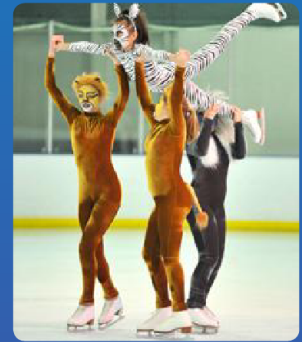



THE PIC SKATE - The most responsive inline skate EVER!
www.picskate.com

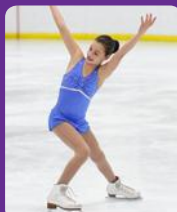
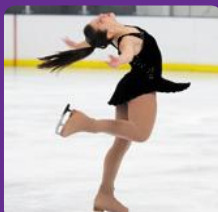
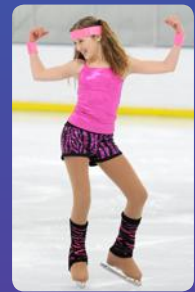
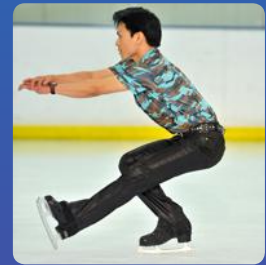


ISI ARTISTIC

Professional On-Ice Photography by ActionPhotos.com



CHALLENGE GALLERY





Name that weSKATE Skill

You are probably learning new skills every week – and working on improving those you already know. But do you know their names? Match the description with the name of each move. You may want to use your *ISI Handbook* for help.

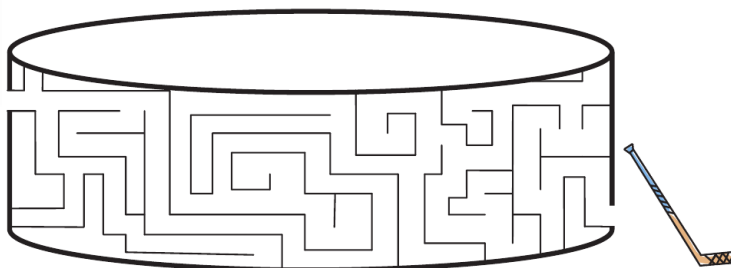
- | | |
|-------------------|--|
| 1. Waltz Jump | a. Gliding forward and turning backward on one foot |
| 2. Swizzle | b. Lizzie's favorite position |
| 3. Pivot | c. 1 ½ revolutions in the air |
| 4. Mohawk | d. 1 revolution in the air taking off and landing on the same edge |
| 5. Axel | e. Using the outside edge to end in a capital letter |
| 6. Shoot the Duck | f. Gliding forward and turning backward by changing feet |
| 7. Three Turn | g. ½ turn in the air taking off forward and landing backward |
| 8. Arabesque | h. Standing on toepick while other skate glides in a circle |
| 9. Loop Jump | i. Both feet pumping in and out at the same time |
| 10. T-Stop | j. A one-foot glide with the free leg higher than the hip |



What could be better than colorful skating and colorful eggs? Colorful skating eggs! Have fun!

ALEX NEEDS YOUR HELP

Alex has a big game today and can't seem to find his hockey stick.
Can you help him find it so he makes it to his game in time?



WHERE'S WALLEY?

The Walley is a jump similar to the Loop Jump in Freestyle 4, except that it takes off on a backward *inside* edge and rotates one full revolution in the air before landing on a backward *outside* edge. On the Freestyle 7 test, a skater must perform two Walley jumps in a row – challenging because of that takeoff edge, but beautiful when done with a lot of speed and flow.



How many Walleys can you find in the puzzle below?
Look in every direction until you've found 15 of them!

| | | | | | | | | | | | |
|---|---|---|---|---|---|---|---|---|---|---|---|
| W | Y | L | A | W | A | Y | E | L | L | A | W |
| A | E | L | W | A | E | E | W | W | L | E | A |
| Y | L | W | A | L | W | A | A | L | E | W | L |
| E | L | Y | L | W | A | L | L | E | Y | A | L |
| L | A | A | L | Y | L | W | L | A | Y | L | E |
| L | W | Y | E | E | W | A | E | A | E | L | Y |
| A | L | W | Y | E | L | L | A | W | L | E | E |
| W | A | L | L | E | Y | L | Y | A | L | Y | W |
| Y | A | W | A | L | Y | E | L | L | A | W | E |
| E | W | A | L | L | E | Y | E | A | W | L | Y |

competitions

april

1-3 Orleans MA

Charles Moore Arena
33rd Annual ISI Lower Cape Team Competition

1-3 Fairview Heights IL

US Ice Sports Complex
10th Annual Spring Fling Invitational

1-3 Knoxville TN

Ice Chalet
The 42nd Annual Robert Unger ISI Skating Competition

2 Geneva IL

The Skate School @ Fox Valley
Spring Invitational 2011

2-3 Delmont PA

Center Ice Arena
Golden Blades Championship of Pittsburgh

2-3 Saratoga Springs NY

Weibel Ice Rink
Saratoga Springs FSC
14th Annual Saratoga Springs Invitational



8-10 Bensenville IL

Edge Ice Arenas
ISI Synchronized Skating Championships

9-10 Richmond VA

Richmond Ice Zone
2011 District 4 Championships

9-10 Anaheim CA

KHS Ice Arena
Jump into Spring 3rd Annual ISI Open

9-10 Van Nuys CA

Iceland Van Nuys
Annual ISI Competition

10 Boardman OH

The Ice Zone
Spring Invitational

15-16 Gatlinburg TN

Ober Gatlinburg Ice
Ober Gatlinburg ISI Team Competition

15-17 Tacoma WA

Sprinker Recreation Center
ISI Spring Fever Team Competition

16-17 Franklin Park IL

Franklin Park Ice Arena
Spring Fever Competition

16-17 Soldotna AK

Soldotna Sports Center
Riverskate 2011 ISI Team Competition

16-17 Monsey NY

Sport-O-Rama Ice Rinks
Sport-O-Rama Spring Classic

16-17 San Mateo CA

Ice Center San Mateo
April Ambush

17 Lake Worth FL

Palm Beach SkateZone
Sea Shore Classic

22-23 Boxborough MA

Nashoba Valley Olympia
ISI 31st Annual Team Competition

30-May 1 Fairfax VA

Fairfax Ice Arena
2011 ISI Spring Competition

30-May 1 El Segundo CA

Toyota Sports Center
Spring Fling

30-May 1 Great Neck NY

Andrew Stergiopoulos Rink
7th Annual Long Island Ice Classic

30-May 1 Johnstown PA

Planet Ice
Spring Challenge Championship

may

7-8 Yorba Linda CA

Orange County Ice Palace
8th Annual ISI Open

14-15 Pasadena CA

Pasadena Ice Skating Center
27th Annual ISI Open Competition



28-30 Dallas TX

Dr Pepper StarCenter McKinney
(& DPSC Frisco, if needed)
ISI Conference Championships

june

3-5 New York NY

Sky Rink @ Chelsea Piers
25th Annual ISI Team Competition

11-12 Chicago IL

McPetridge Sports Center
22nd Annual School's Out Competition

17-19 Clearwater FL

Clearwater Ice Arena
25th Annual ISI Competition

17-19 South Lake Tahoe CA

South Lake Tahoe Ice Arena
Skate at the Lake ISI Open Competition

july

2-3 Paramount CA

Paramount Iceland
Paramount Iceland's American Classic

16 Wilmette IL

Centennial Ice Rinks
Mid-Summer Classic

23 Bremerton WA

Bremerton Ice Center
Summer Stars



25-30 Blaine MN

Schwan Super Rink
ISI World Recreational Team Championships

30 Gurnee IL

Rink Side Ice Arena
The Summer Chiller

august

4-7 San Diego CA

San Diego Ice Arena
State Games of America

september

16-18 Arlington TX

ICE at The Parks
7th Annual Open Competition



30-Oct. 2 Oldsmar FL

Tampa Bay Skating Academy-Oldsmar
ISI Adult Championships

december



2-4 Burbank CA

Pickwick Ice Skating Center
ISI Artistic Challenge

► 2012

february



17-19 Northbrook IL

Northbrook Sports Center
ISI Winter Classic

shows & exhibitions

april

1-2 Norwich CT

Norwich Ice Rink
Norwich Skating School
Under the Sea

2-3 Stevens Point WI

KB Willett Ice Arena
Time to Skate

3 Greensburg PA

Kirk S. Nevin Arena
Over the Rainbow

8-11 Southgate MI

City of Southgate Civic Center
Fun in the Sun

9 Soldotna AK

Soldotna Sports Center
Skating Under the Big Top

15-16 Joliet IL

Inwood Ice Arena
Inwood's Adventure Theme Park

15-16 Champaign IL

University of Illinois Ice Arena
City Lights

15-16 University Park PA

Penn State Ice Rink
Seasons

15-17 Park Ridge IL

Oakton Ice Arena
Club Oakton

15-17 Chicago IL

McFetridge Sports Center
Totally '80s

22-23 Newark OH

Lou & Gib Reese Ice Arena
6th Annual Jane McConnell Ice Show

23 Wasilla AK

Brett Memorial Ice Arena
Spring Ice Show

29-30 Woodbury MN

Bielenberg Sport Center
Skate Woodbury Magic

29-30 Palo Alto CA

Winter Lodge
Skating Through School

29-May 1 White Bear Lake MN

White Bear Lake Sports Center
From Books to Blades...

29-May 1 Roseville MN

Roseville Skating Center
42nd Annual Roseville Ice Show-
Everything's Coming up Roseville

29-May 1 Yonkers NY

Edward J. Murray Memorial
Skating Center
Books Upon the Shelf

29-May 1 Carol Stream IL

Carol Stream Ice Rink
Lights, Camera, Action

may

1 Marlboro MA

FMC Navin Arena
Flower Power

6-7 Peoria IL

Owens Recreation Center
A World of Skating

6-7 Lakewood CA

Glacial Garden Skating Arena
2nd Annual Spring Show "Peter Pan"

6-8 West Dundee IL

Leafs Ice Center
Oz on Ice

13-15 Franklin Park IL

Franklin Park Ice Arena
All Aboard the S.S. Franklin

13-15 Wilmette IL

Centennial Ice Rinks
Opposites Attract

14-15 Birmingham MI

City of Birmingham Ice Sports
Arena Fame!

15 Nashville TN

Centennial Sportsplex
Spring Ice Show

20-21 Stillwater MN

St. Croix Valley Recreation Center
Cinema on Ice

20-22 Glenview IL

Glenview Ice Center
The Wonderful Wizard of Ice

20-22 Niles IL

Niles Park District Iceland Arena
Glide on Down the Yellow Brick Road

21 Paramount CA

Paramount Iceland
Iceland's Spring Spectacular Ice
Skate Recital

21-22 Boxborough MA

Nashoba Valley Olympia
Ice Magic 2011

22 Glen Ellyn IL

Center Ice of DuPage
Just Dance

june

12 Cromwell CT

Champions Skating Center
Glee on Ice

18 Arlington TX

ICE at The Parks
Summertime

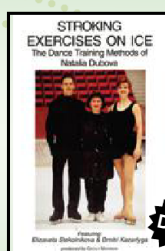


Recreational Ice Skating Is Now Digital!

In addition to your print magazine, if we have your email address you will now receive a link to a digital version of this magazine, complete with links to key contacts and advertisers. If you have not registered your email address with ISI, send this info to members@skateisi.org: ISI member number, full name, city/state and email address.

Learn to Skate like a
CHAMPION
with *Stroking Exercises on Ice* 3-DVD set

Over 50 instructional videos available! (888) USA-2014



10% off next order

use code: ISI2Q11 • offer ends 5/31/11

Skatetape.com

Skatetape.com The Figure Skating Video Superstore



The weSKATE Test Standards DVD

A Must-Have for All ISI Skaters, Parents and Coaches!

View detailed demonstrations of the passing standards for each required ISI test maneuver (i.e., jumps, spins, gliding maneuvers and dance step sequences) in the Pre-Alpha through Delta and Freestyle 1-10 levels.

You'll also see evaluations of the skater's moves, and even demonstrations of mistakes during a freestyle test program — and how to avoid them.

Get this handy educational reference for only \$20 (plus shipping) at skateisi.org/dvd or call (972) 735-8800.



Support Those Who Support the ISI Mission

When you order tights from **U.S. Icewear**, the company will donate **50 percent of the suggested retail price** to the ISIA Education Foundation in support of its scholarship program.

For more information and to order your U.S. Icewear tights, go to the skaters' page at skateisi.org and select the U.S. Icewear button on the left.



Find us on:
facebook®

Classified Advertising

The Champion Behind The Champion -

Recipient of Prestigious Mom's Choice Award and Dove Seal of Approval. \$23.95 + S&H.

CUTE! ADORABLE plush LambieAnn

book character 10" & 14" (\$15 & \$20)

www.BarbarAnn.com (440) 546-9152



To place classified advertising, call Carol Jackson, advertising sales manager, at (972) 735-8800, fax to (972) 735-8815 or send e-mail to cjackson@skateisi.org. The deadline for the next issue of *Recreational Ice Skating* is April 25.

Ice Skating + FUN = ISI National Events!

It All Adds Up to Skating for the FUN of It!

Five upcoming competitions — unlimited opportunities!

It's a no-brainer! ISI skaters have the most opportunities to compete in a wide variety of events and in a fun, welcoming environment.

July 25-30, 2011

NSC Schwan Super Rink
Blaine, MN

Entry & Test
Deadline:
May 1, 2011



Sept. 30-Oct. 2, 2011

Tampa Bay Skating
Academy-Oldsmar
Oldsmar, FL

Entry & Test
Deadline:
Aug. 15, 2011



December 2-4, 2011

Pickwick Ice Skating
Center
Burbank, CA

Entry & Test
Deadline:
Oct. 15, 2011



Feb. 17-19, 2012

Northbrook Sports Center
Northbrook, IL

Entry & Test
Deadline:
Dec. 1, 2011



March 30-April 1, 2012

St. Peters Rec-Plex
St. Peters, MO

Entry & Test
Deadline:
Feb. 1, 2012



Go to skateisi.org for entry forms and additional event details.





July 25-30 NSC Schwan Super Rink Blaine, Minnesota

Entry & Test Deadline: May 1

Three's a charm for ISI Worlds at Schwan Super Rink! Worlds returns for the third time to the country's largest indoor ice skating facility, now with an incredible eight rinks under one roof! This facility is part of the National Sports Center, one of the largest amateur sports complexes in the world. The Twin Cities of Minneapolis and St. Paul are less than 30 minutes away, offering plenty of fun family attractions, like the gigantic Mall of America with its own indoor theme park, the Riverfront District, Loring Park, Uptown, "Eat Street" and beautiful lakes and parks galore. Mark your calendar for Worlds 2011, and get ready for the largest recreational ice skating competition on the planet and a healthy dose of "Minnesota Nice."

More Info:
skateisi.org/Worlds
minneapolis.org
ci.blaine.mn.us
nscsports.org

For event details and entry forms...
skateisi.org/Worlds

