

recreational **IceSkating**

Spring 2019

ISI WORLDS: JULY 22-27

Interpretive Skating

ISI Competitions 101

ISI Adult Champs

ISI Holiday Challenge

Maddison Bullock

Creator of 'Ice The Movie'



Plus...
Event Photo Galleries!

Come One, Come All to ISI World Recreational Team Championships



July 22-27

St. Peters Rec-Plex

St. Peters, MO

Test & Entry Deadline: May 1

skateisi.org



ISI
ICE SPORTS INDUSTRY

what's inside

Recreational Ice Skating | Spring | 2019 | Vol. 41, Number 1



On the Cover

St. Peters Rec-Plex skaters, from left to right: Front: Natalie Friis; Center: Mackenzie Rupert, Evie Whitacre; Back: Morgan Shepherd, Katie Celli, Peyton Webb, Devon Dietiker. Photo and sign by St. Peters Rec-Plex Recreation Superintendent Kelsie Grate



Ice Sports Industry
6000 Custer Rd., Bldg. 9
Plano, TX 75023
Phone: (972) 735-8800
Fax: (972) 735-8815
email: isi@skateisi.org
www.skateisi.org

Publisher
Ice Sports Industry

Editor
Eileen Viglione

Editorial Advisors
Kim Hansen
Liz Mangelsdorf

Advertising Director
Carol Jackson

Graphic Designer
Brittany Allen

Recreational Ice Skating ISSN 0164-4106 (USPS 361-570) is published twice annually — Spring and Fall — by the Ice Sports Industry (ISI), 6000 Custer Rd., Bldg. 9, Plano, TX 75023. Periodicals postage paid at Plano, TX, and at additional mailing offices. POSTMASTER: Send address changes to *Recreational Ice Skating*, 6000 Custer Rd., Bldg. 9, Plano, TX 75023. Printed in the U.S.A.

©2019 by the Ice Sports Industry. Reproduction in whole or in part is prohibited unless expressly authorized in writing by publisher. All rights reserved. Opinions expressed by contributors do not necessarily represent the views of the Ice Skating Institute, the publisher or the advertisers. Submissions of manuscripts, materials, photographs, and artwork are made at mailer's risk and must include self-addressed envelope with sufficient postage for return. No responsibility will be assumed for unsolicited materials. ISI reserves the right to edit material submitted for content and space consideration.

4

News & Notes

6

2019 ISI Worlds

Meet Us in St. Louis

8

2019 ISI Winter Classic Photo Gallery

10

2019 Holiday Challenge

Promising You a Rose Garden in New England

12

My Coach Rocks!

14

Maddison Bullock

Creator of 'Ice The Movie'

18

2018 ISI Adult Championships Photo Gallery

20

2019 ISI Adult Champs

Fixin' to Shake Up Texas!

22

Focus On

23

ISIA Education Foundation

Are You a Skating Scholar?

24

Flip 'n' Fun Adventures & Activities

26

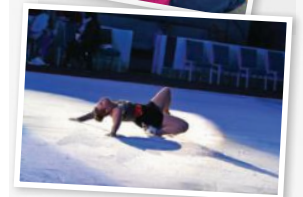
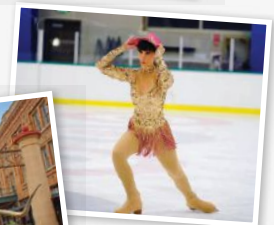
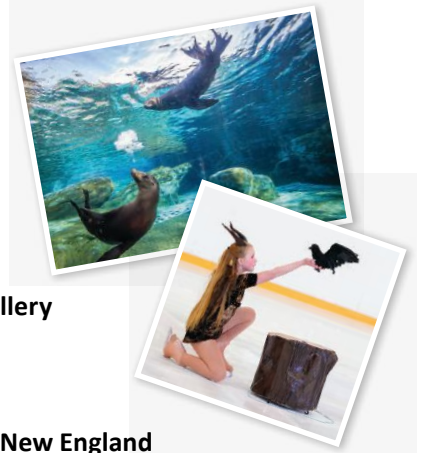
2018 Theatrical Challenge Photo Gallery

28

Calendar

30

Parents' Page



ISI HEADQUARTERS

Managing Director
Liz Mangelsdorf

Controller
Heather Loller

**Skating Programs &
National Events Director**
Kim Hansen

Operations Director
Jeff Anderson

Advertising/Trade Show Director
Carol Jackson

Communications Mgr./Editor
Eileen Viglione

Membership Coordinator
Sandey Carlsen

Membership Services
Jennifer Carlsen
Wendi Osterheldt
Shirley Rothrock

Administrative Assistant
Angela Tooley

ISI OFFICERS

President	Rob McBride
1st Vice President	Janice Teodoro-Forbes
2nd Vice President	Lisa Fedick
Treasurer	Kevin McCormack
Secretary	Margy Bennett
Immediate Past President	Jim Hartnett
Member-at-Large	Gerry Lane
Member-at-Large	Scott McCoy
Member-at-Large	Jane Schaber

ISI FIELD REPS

Shanley Pascal
Mandy Whitacre

DIRECTORS

District 1	Alane Swiderski
District 2	Robyn Bentley
District 3	Tiesha DiMaggio
District 4	Christine Wilson Brinton
District 5	Larry LaBorde
District 6	Julie Goddard
District 7	Vacant
District 8	Vicky Klinko-Osseland
District 9	Vacant
District 10	Jane Schaber
District 11	Caroline Baker
District 12	Debbie Lane
District 13	Vacant
District 14	Paige Scott
District 15	Randy Winship
District 16	Cindy Solberg
District 18	Vacant
Builders & Suppliers	Doug Peters
Instructors	David Santee
Commercial Facilities	Scott McCoy
Public/Not-for-Profit Facilities	Ed Peduto
Schools/Colleges/Universities	Jamie Baringer
PSA Representative	Gerry Lane
ISI/Asia Representative	Harry Janto Leo
PPFMG Representative	Ryan Shaffer
MIRMA Representative	Judy Sniffen
Education Foundation	Don Bartelson

news & notes



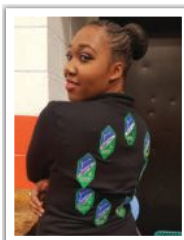
2019 Event Theme: 'Welcome to the Jungle'

The ISI office selects a new theme each year for all of the Themed Spotlights and Themed Production events offered at that year's national competitions. The 2019 theme is "Welcome to the Jungle." We encourage you to create your own version of what this theme means to you. You can continue to use these "themed" programs through the final national event of 2019, ISI Holiday Challenge in October.

WANTED: ISI Reporters

If you've always wanted to see your work — and your name — in print, here's your chance! ISI members (and their friends and family, too) are invited to submit their reports, observations and photos from ISI local, regional and national events, year-round. Tell our readers all about your experience at the event, what you saw and heard, highlights, behind-the-scenes stories, inspirations, what made the event different or special — anything you want to report, and the more detail, the better!

We'll feature the best reports in this magazine. Send your event reports and photos to editor@skateisi.org



Boast Your Badges!

Displaying your ISI test badges is a great way to track your skating progress and wear it proudly. ISI members and their parents are known for their creativity, and their badge displays are no exception. We'd love to know how you display your ISI badges! Send a photo of yourself "boasting your badges" to editor@skateisi.org and we'll feature you in the next issue of *Recreational Ice Skating* magazine.

The ISI Skater's Creed

If you've ever participated in an ISI national competition, you have probably seen the ISI Skater's Creed in the program book. The ISI Skater's Creed was created to remind skaters of the importance of practicing good sportsmanship, working hard to achieve their goals, being a good teammate and having fun while skating.



ISI CHALLENGE: See if you and/or your skating friends can memorize it! Have a parent or another friend take a video of you and/or your friends reciting it. Then, send it to editor@skateisi.org and we'll share it on our website and social media feeds, like Instagram, Twitter and Facebook.

ISI Skater's Creed

By Justine Townsend Smith

- I will try to do my own personal best.
- I will support and encourage my fellow teammates.
- I will make three new friends at this competition from ice rinks other than my own.
- I will be a good representative from my home rink team.
- I will skate at my own true level of ability.
- I will be modest in victory.
- I will be gracious in defeat.
- I will not focus on winning but on my participation in and enjoyment of ice skating.

Justine Townsend Smith served as ISI's executive director from 1980-95.

Get Social with Us!



SkateISI



SkateISI — Ice Sports Industry



SkatingISI

Have a GREAT story idea? Send it to Eileen Viglione at editor@skateisi.org

ISI NATIONAL EVENT CHECKLIST



AT LEAST THREE MONTHS BEFORE EVENT:

- ☐ Go to ISI website (skateisi.org) to get event details.
- ☐ Pass test(s) for skating level you wish to participate in at event.
- ☐ Talk with your coach and decide which events you should enter, and how to enter some extra events that don't require a program routine. (Check out the special discounted events for the year!)

BY ENTRY DEADLINE:

- ☐ Make sure your ISI membership has been renewed for the new membership term. If not, your membership renewal fee can be included on your event entry form.
- ☐ Make sure your highest tests are registered with ISI by your coach.
- ☐ Complete your registration online or on paper.

TWO MONTHS BEFORE EVENT:

- ☐ Make or purchase costumes.
- ☐ Make props for Spotlight events.
- ☐ Learn new programs.

AFTER EVENT SCHEDULE IS RELEASED:

- ☐ Double check that all your events are listed on the schedule, that your name is spelled correctly and that your rink is listed accurately.
- ☐ Make travel plans, including hotel reservations at an ISI host hotel, listed on the ISI website.

WEEK BEFORE EVENT:

- ☐ All national event music must be on CD only (no CD RW), unless the venue is requesting MP3s. (Guidelines for MP3s will be provided on skateisi.org.) Make sure you have one program per CD, and always have a backup copy, too.

DURING EVENT:

- ☐ Smile!
- ☐ Skate your best.
- ☐ Take your picture with Flip!
- ☐ Practice ISI sportsmanship.
- ☐ Meet new friends, trade pins and contact information, etc.
- ☐ Have FUN!



ISI World Recreational Team Championships

July 22-27

ICE at the Parks
St. Peters Rec-Plex
St. Peters, Mo

Test & Entry: May 1

Visit skateisi.org/worlds

GET ON TOP OF THE WORLD! MEET US IN ST. LOUIS

by Eileen Viglione

ISI World Recreational Team Championships is the largest recreational ice skating competition in the country! It is open to all skaters who are interested in competing in a fun and friendly environment, and it attracts skaters from all parts of the United States and several foreign countries.

Our philosophy is "participation, not elimination." That means skaters, regardless of their skating level, are able to experience the thrill of performing for an audience while competing on a level playing field. ISI Worlds participants can choose from more than 25 event categories for individuals, partners, groups and teams. The more events you enter, the more points you accumulate for your team and the greater chance of earning medals and capturing first place. The team with the most collective points goes home with the Michael Booker Trophy, named for the British figure skating champion, Olympian, former ISI president and famed coach.

Here are 5 reasons why you'll want to "Meet Us in St. Louis" for our 39th annual ISI Worlds:

1. THE VENUE - ST. PETERS REC-PLEX

St. Peters Rec-Plex has used the ISI Learn to Skate program since opening its doors in 1994. Over the years, it has hosted many ISI national events, including ISI Worlds in 1998 when the arena only had one sheet of ice. Today, the state-of-the-art facility, considered the "crown jewel" of the community, has three NHL-size rinks, a natatorium for swimming and diving, an indoor track and workout facilities. It's little wonder why the 2004 U.S. Olympic diving trials took place at this amazing place!



2. COMPETITORS' PARTY

Each year, ISI hosts a party at a fun facility, such as a waterpark or amusement center, for Worlds skaters and their families. This wonderful event gives skaters a chance to catch up with friends they have met at other ISI national and local events and to meet new friends who share the same passion for skating. Watch the ISI website (skateisi.org) and follow us on Facebook, Instagram and Twitter for more details coming soon!



Grant's Farm



Forest Park Fountain



St Louis Zoo Sea Lions

Photos courtesy of Explore St. Louis

3. BENEFIT SHOW

The ISI Benefit Show is always the highlight of ISI Worlds week and is held on the Friday night during competition week (July 26 this year). It features talented Worlds participants selected throughout the week, plus a soon-to-be-announced celebrity guest skater. Also, two lucky skaters will earn a spot in the production through the “Skate with the Stars” raffle drawing, which benefits the ISIA Education Foundation scholarship program. Stay tuned to ISI social media and skateisi.org for more information.

4. SKATER CLINICS

Once again, ISI Worlds will offer up the unique (and affordable) chance for participants to learn skating tips and techniques from accomplished skaters, coaches and/or choreographers. Guest instructors in the past have included Gracie and Carly Gold, Ross Miner, David Santee, Rockne Brubaker, coach Rafael Arutyunyan (with Mariah Bell), coach John Nicks (with Ashley Wagner) and choreographer Phillip Mills.

Keep an eye on the ISI website (skateisi.org) and social media for more information to be announced shortly.

5. ST. LOUIS

Located just 30 minutes east of St. Peters, St. Louis has more FREE tourist attractions than any other city in the country, aside from Washington, D.C. You don't have to pay admission to get into the history museum, art museum, science center and zoo, all located in the 1,300-acre Forest Park, one of the largest city parks in the world.

St. Louis is also filled with plenty of kid-friendly and family-oriented activities. Its most popular attraction and landmark is the 630-foot-tall Gateway Arch, the highest man-made monument in the United States. You can take a tram ride to the top of the arch, where you'll be able to see amazing views of the Mississippi River and famous city landmarks.



Gateway Arch

COOL FACTS

St. Louis is:

- The birthplace of 7-Up, ice tea and the ice cream cone
- Home of the tallest monument in the world — The Gateway Arch
- Named after a Native American tribe, called the Missouri (meaning “town of the large canoes”)
- Nicknamed the “Cave State” for its thousands of caves

Missouri is:

- Bordered by eight states (Can you name them?)
- Answers are printed upside down on the bottom of this page.*

STAY TUNED

Watch for important Worlds updates on the ISI website at skateisi.org, and follow us on:



SkateISI



SkateISI — Ice Sports Industry



SkatingISI

Q: What do these top skaters have in common (aside from incredible talent)?
Jason Brown, Gracie Gold, Ryan Bradley, Ashley Wagner, Meryl Davis & Charlie White, Mirai Nagasu, Evan Lysacek and Mariah Bell?

A: They have all appeared as star skaters in the ISI Benefit Show!

MORE INFORMATION

Skateisi.org/worlds

Stpetersmo.net

Explorestlouis.com

Answers: Iowa, Illinois, Indiana, Kansas, Nebraska, Missouri, Oklahoma, Arkansas, Tennessee, Kentucky, Tennessee, Arkansas, Kansas, Nebraska

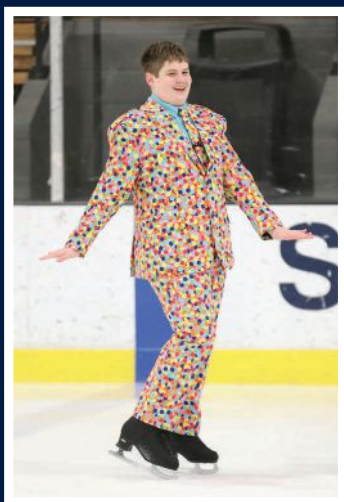
2019 ISI WINTER C

Toyota Sports Center Claims the Robert Unger Trophy

The ISI Winter Classic's Robert Unger Trophy was awarded to Toyota Sports Center, the Overall Team Champion of the 2019 event.

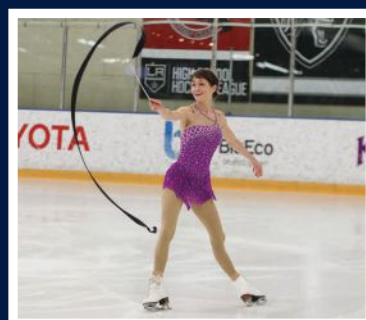
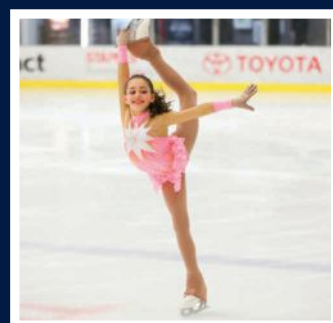
More than 700 skaters from 29 rink teams from eight states and Mexico participated in the 34th annual Winter Classic event held Feb. 22-24 at the beautiful Toyota Sports Center in El Segundo, Calif. States represented include: Alaska, California, Colorado, Minnesota, Ohio, South Dakota, Texas and Washington.

"There was a ton of energy in the building, with skaters, coaches, parents and vendors, and we saw a lot of smiling faces and people excited to be a part of ISI Winter Classic," said ISI Skating Programs and National Events Director Kim Hansen. "Toyota Sports Center is a fabulous facility and their staff was so great and well organized. They did a fantastic job hosting our event and helped us present it well."

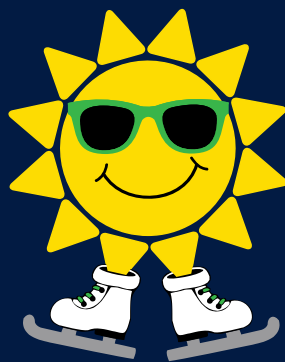


Skated the Most Events:

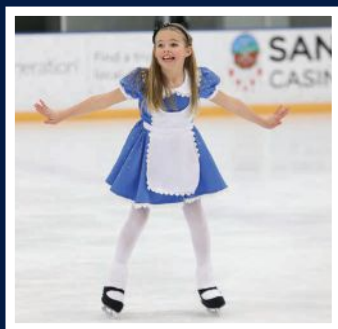
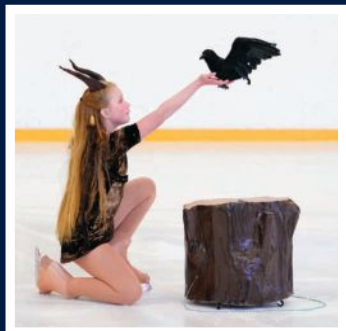
Robert Trygstad, Dublin Iceland, Dublin, Calif. — 17 events



CLASSIC



El Segundo
2019
ISI WINTER CLASSIC



Photos by Gabriele Photography

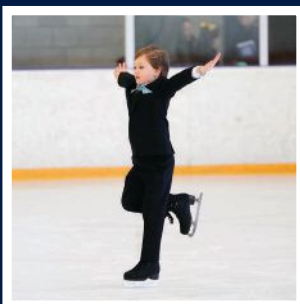
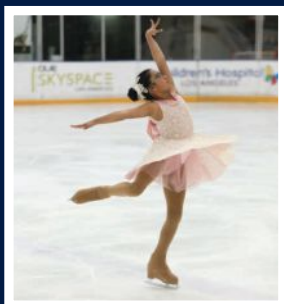


Oldest "Young at Heart" Skaters:

Female: Cheryl Graffi, 74, Pasadena Ice Skating Center, Pasadena, Calif.
Male: Wild John Cohen, 65, Toyota Sports Center, El Segundo, Calif.

Team That Traveled Farthest:

Skating Club of Greater Youngstown, Canfield, Ohio



Top 10 Teams

PLACE	TEAM	POINTS
1.	Toyota Sports Center	916.0
2.	Iceoplex Simi Valley	677.0
3.	Icettes - District 196	635.0
4.	Ice Station Valencia	397.5
5.	Ontario Ice Skating Center	366.0
6.	Dublin Iceland	225.5
7.	El Paso Figure Skating Club	207.0
8.	Valley Edge Skating School	206.0
9.	Iceland-Van Nuys	198.5
10.	Juneau Skating Club	171.0

For a complete list of teams and results, visit skateisi.org/winterclassic



ISI Holiday Challenge

Oct. 25-27

RoseGarden Ice Arena
Norwich, Conn.

Test & Entry: Sept. 1

Visit skateisi.org/holidaychallenge

PROMISING YOU a ROSE G

ISI heads to Norwich, Conn., known as “The Rose of New England,” for the 2019 Holiday Challenge, at the spectacular RoseGarden Ice Arena. Featuring an NHL-size rink, arcade, concession areas and more, the arena received a \$1.7 million makeover in 2015.

Norwich is an historic city, located about 20 minutes from the Atlantic ocean. This area of the country is the perfect place for a vacation. It not only has beautiful beaches but it’s also filled with fun and fascinating things to do. Plus, October is the best time to see the famous New England trees bursting with fall colors!

Holiday Challenge offers skaters the perfect opportunity to perfect their holiday programs. Test and entry deadline is Sept. 1. Start planning now. See you in New England!

TOP 5 THINGS to DO

1. Visit an orchard to pick **apples and pumpkins**, enjoy **cider donuts** and **hot cider** and find your way out of a **corn maze**.
2. Take a drive on Route 169 from Norwich to Woodstock to “**leaf peep**” — see the colorful leaves on the trees.
3. Explore Mystic Seaport Museum, where you can climb aboard **massive sailing ships** and learn about the **history of ship building** and the **fishing** industry.
4. Tour the **USS Nautilus submarine**, the world’s first nuclear powered vessel, first ship to go to the North Pole and first submarine to journey 20,000 leagues under the sea!
5. Discover more than **40 life-size dinosaurs** on nature trails at a 60-plus acre family fun adventure park.



Mystic Seaport



The Dinosaur Place at Nature's Art Village



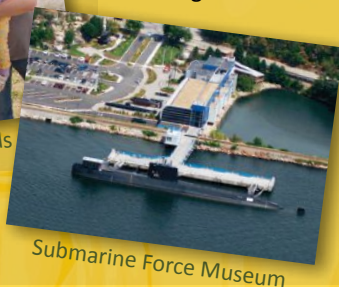
MORE INFORMATION

Holmberg Orchards
Gales Ferry, CT
holmbergorchards.com

Mystic Seaport
Mystic, Conn.
mysticseaport.org

The Dinosaur Place/Nature's Art Village
Montville, Conn.
Naturesartvillage.com

Submarine Force Museum
(Home of the USS Nautilus)
Groton, CT
ussnautilus.org



Attractions FOR GROWN-UPS

The Spa at Norwich Inn
Norwich, Conn.
thespaatnorwichinn.com

Mohegan Sun
Uncasville, Conn.
mohegansun.com

Foxwoods Resort Casino
Mashantucket, Conn.
foxwoods.com

ARDEN in New ENGLAND!

by Eileen Viglione

EXERCISE YOUR BRAIN

Do you know which states make up New England?

Write them here: (Answers at bottom of article)

- | | | |
|----------|----------|----------|
| 1. _____ | 2. _____ | 3. _____ |
| 4. _____ | 5. _____ | 6. _____ |



Photos courtesy of Connecticut Office of Tourism

Answers: Connecticut, Maine, Massachusetts, New Hampshire, Rhode Island and Vermont



INTRODUCING
THE 12" STUFFED FLIP —
ISI's ADORABLE MASCOT

AVAILABLE AT ISI WORLDS, JULY 22-27



Just one more reason to attend
the 39th annual ISI World Recreational
Team Championships!

Order your 12" Flip online
at skateisi.org AFTER Aug. 1.



MY COACH ROCKS!

Does your ISI coach rock? Please send a short essay (about 125 words) telling us why, along with a high-resolution photo, to editor@skateisi.org. We'll run it in an upcoming issue of Recreational Ice Skating magazine. Note: Essays must be composed by skaters (not their parents). Skaters and coaches must be current ISI members.



TERI BALLARD

My coach rocks, because she is kind, patient and has taught me to work hard. I couldn't ask for a better coach!

**Amelie Velasquez, 6, Gamma
The Rinks – Westminster ICE
Westminster, Calif.**



TIESHA DIMAGGIO

My coach's name is Tiesha DiMaggio and she just got done with fighting cancer. She is the best coach I could ever ask for, because she is so kind and caring. She wants you to be the best 'you' you can be. She believes in you when you don't believe in yourself. She is always there for you, and I couldn't think of a better coach to have.

**Kassy Fort, 13, Platinum (ISI); Juvenile (U.S.
Figure Skating)
RoseGarden Ice Arena
Norwich, Conn.**

MY COACH ROCKS!

GABRIELLA WEISSMANN

My coach rocks, because she is not only coaching me in skating but also in life. Everything that is being taught is also a life lesson. She always motivates me and pushes me to be the best she can be. She has patience and is very compassionate.

**Adrianna Cardenas, 10, Open Freestyle Silver (ISI)
Pre-preliminary (U.S. Figure Skating)
Toyota Sports Center
El Segundo, Calif.**



SARAH BROOKS

My coach rocks! She pushes me to do the best I can and makes figure skating such a great experience!

**Hannah Mitchell, 16, FS 8
Inwood Ice Arena/Joliet Park District
Joliet, Ill.**



Maddison Bullock

Creator of 'Ice The Movie'



Pro Skater & Former ISI Coach Adds Movie Screenwriter, Producer & Actress to Her Accomplishments!

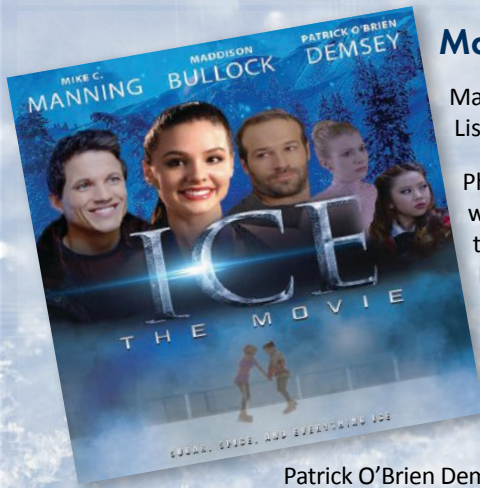
by Eileen Viglione

While a number of movies have been created that showcase the sport of figure skating, few, if any, have been written and produced by a professional skater — who also stars in the film! Such is the case with the latest figure skating film, “Ice The Movie,” which was released on Amazon in April 2018 and is also available for purchase on Blue-ray.

A professional skater and former ISI Professional coach, Maddison Bullock, 26, is the creative, independent filmmaker and actress behind this inspirational sports drama that shares the journey of two elite skaters, who are best friends and competitors on the ice. The heartwarming story will appeal to not only skaters and their families but also to a larger audience.

“I created ‘Ice The Movie’ as a sort of love letter to the sport,” said Madison. “I was raised by figure skating and attribute so much of my adult success on and off the ice to my skating family and community. The film addresses the obstacles that athletes and their families must overcome to achieve athletic excellence while highlighting key values such as work ethic, loyalty and good sportsmanship. The whole family will enjoy this picture — there’s something for everyone!”

“The moral to the storyline is that it isn’t about the medals, or the titles. It is about the relationships you make along your athletic journey — ultimately, family, friendship and character are the gold-medal values most celebrated in ‘Ice The Movie.’”



Main Characters

Maddison stars as Bailey Grantham in the film, and former figure skater and actress Lisa Mihelich plays the role of Peyton Shaw, Bailey’s best friend.

Phoebe Stubblefield portrays the younger version of Bailey. When Maddison was visiting the Olympic Training Center in Colorado Springs, where she used to train, she discovered Phoebe practicing on the ice and was amazed by how much Phoebe’s skating reminded her of herself at that same age.

2017 U.S. Juvenile pewter medalist Elise Freezer stars as the younger version of Peyton and 2013 U.S. champion Max Aaron, two-time U.S. champion Alissa Czisny and 1984 U.S. Olympic pairs silver medalist Peter Carruthers all have brief appearances in the movie.

Patrick O’Brien Demsey, who starred as the captain of the 1980 U.S. hockey team in the 2004 movie, “Miracle,” plays the role of Bailey’s father, a retired professional hockey player. Other key actors include Disney Channel’s Mike Manning, Tanner Novlan of the 2016 TV series, “Cold,” and actor and director Michael Monks, who starred in the TV series “The Practice” and the movie, “End of Watch.”

Early Years

Maddison grew up in Lone Tree, Colo., and began skating when she was 4 years old. She practiced at the Olympic Training Center and reached the U.S. Figure Skating senior level. She competed in the U.S. Sectional Figure Skating Championships and the U.S. Junior Figure Skating Championships.

After graduating from Colorado’s Highlands Ranch High School, she attended the University of California, Los Angeles (UCLA), where she earned a degree in history. While at UCLA, she helped start the Intercollegiate Competitive Figure Skating team and won a bronze medal at the 2014 Intercollegiate Championships. She also pursued her interest in acting, joining several theater groups.





Summer of Excellence

JUNE 3 – JULY 26, 2019



SKATE WHERE THE CHAMPIONS SKATE



with Olympic & Hall of Fame Coach
FRANK CARROLL
July 1-12
*Limited Engagement



Olympic Coach
PSA Coach of the Year
TOM ZAKRAJSEK
JULY 15-19
*Limited Engagement



Olympic Coach
PSA Coach of the Year
TAMMY GAMBILL
JULY 1-5
*Limited Engagement



US Olympic Silver Medalist,
US Figure Skating Hall of Fame
PAUL WYLIE
June 24-28
*Limited Engagement



2 Time World Champion &
Olympic Silver Medalist
LINDA FRATIANNNE



World & Olympic Coach
CHRISTA FASSI



World Medalist
TIFFANY CHIN



World Team
BEBE LIANG



World Team
VITALIY DANYLCHENKO

COMPLETE ON AND OFF ICE TRAINING

- Freestyle Technique
- Conditioning
- Moves in the Field
- Dance
- Power Skating
- Choreography

STEP UP TO THE NEXT LEVEL

Introductory Training Camp 101 • July 29-August 2, 2019

WORLD CLASS THREE RINK FACILITY

Minutes from LAX airport and Southern California beaches and attractions

SOUTHERN CALIFORNIA OPEN CHAMPIONSHIPS

June 21-23, 2019

Test Sessions available through the FSC of Southern California • www.fscsocal.org

• Kings Cove Cafe

• Ultimate Skate & Hockey Pro Shop



facebook.com/ToyotaSportsCenter



[@ToyotaSportsCtr](https://twitter.com/ToyotaSportsCtr)

310.535.4400 • summercamp@ToyotaSportsCenter.com • www.ToyotaSportsCenter.com

As a member of Los Angeles Ice Theater's Senior USA team, she competed in the World Championship Nations Cup in Spain, too.

"It was an unforgettable experience," she said. "I cast my ice theater teammate Danika Kong to portray the main rival skater in the movie."

In 2014, Maddison turned pro and has performed in SeaWorld Orlando's holiday show twice. In 2017, she performed the lead role of the Snowflake Queen in its "Winter Wonderland on Ice" show.

ISI Coach

She moved to Los Angeles to follow her dream of acting. As an ISI Professional coach for Valley Ice Center (now known as LA Kings Valley Ice Center) in Panorama City, Calif., she taught skaters in Tot through Gamma levels. She enjoyed watching her students fall in love with the sport.

Layla Davis, 7, was one of Maddison's students and had the chance to attend the premiere of "Ice The Movie."

"Maddie was always kind to me," she said. "She would never yell. If I did something wrong, she would tell me I was on the right track."

"It was fun to see Maddie's movie, because she worked hard on it for a long time. I liked that I had really good seats!"

Layla continues to skate at LA Kings Valley Ice Center and has achieved ISI Gamma level. Maddison has inspired her to continue to work hard and to never stop trying, she adds.

"My favorite part about ISI is that it is accessible to many skaters of different abilities and levels," said Maddison. "It [the organization] makes it so that skating is a sport for everyone."

Unfortunately, once Maddison began working on "Ice The Movie," she didn't have time to coach. The project took her almost two years, from start (writing the script) to finish. Most of the scenes were filmed in Colorado Springs in 2016 and the movie was first shown to an audience (premiered) in February 2018 at the Ricardo Montalban Theater in Hollywood, Calif.

"I love all aspects of filmmaking," she said. "However, acting is my number-one passion. Growing up, the artistic side of skating was always my favorite."

Maddison continues to skate for fun and auditions for skating roles. "Skating will always be my safe place to express myself," she said, adding that she hopes her "personal journey as a female filmmaker will inspire young women and skaters alike!"



ISI skater Layla Davis with Maddison at the movie premier.

Lights, Camera, Action!

Maddison followed these five steps to create her movie:

1. Write the script
2. Create a team — Director and Cast (people who will play the characters)
3. Shoot the film
4. Edit and add music
5. Premiere it for the world to enjoy!

Total Time to Create "Ice The Movie": Almost 2 years!

Photos courtesy of Maddness Pictures



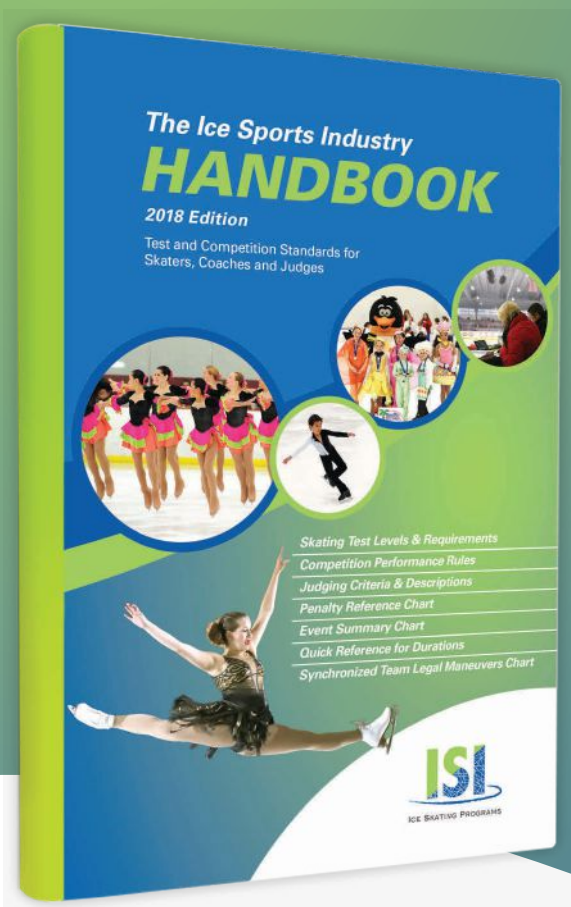
To learn more about Maddison, visit Maddisonbullock.com. "Ice The Movie" can be purchased on fuzzysoakers.com. It's also available for streaming purchase on Amazon.com and Vimeo.com. (Fuzzy Soakers, a figure skating blade cover brand, is a sponsor of the movie.)

Get the LATEST ISI Handbook

2018 Edition

Includes the latest rule revisions and new competition events, and provides a wealth of information, standards and resources for learning, teaching and judging the ISI Recreational Ice Skating Program.

Handbook valid for all test sessions and competitions through Aug. 31, 2020



The 2018 ISI Handbook is the only comprehensive source for:

- ISI test-level requirements
- ISI program information
- Competition events and performance rules
- Judging (including penalty reference chart and quick reference for duration)

\$25 EACH
(plus shipping)

To order, visit skateisi.org/handbook.

2018 20th Annual ISI Adult Championships

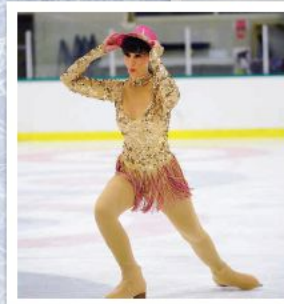
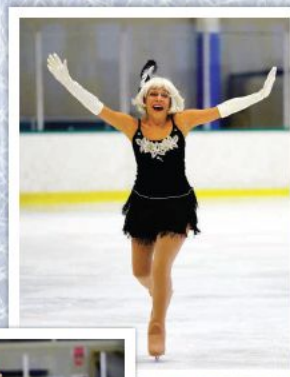


Adult Skaters Enjoy the Adventure in South Lake Tahoe!

The 20th annual ISI Adult Championships took place Oct. 27-28 in an adventurer's paradise — South Lake Tahoe, Calif. Competitors from nine states (California, Colorado, Connecticut, Florida, Illinois, Minnesota, Ohio, Oregon and Texas) headed to South Lake Tahoe Ice Arena in the majestic Sierra Nevada mountains to perform and share their love of skating with both new and old friends.



Skatetown Ice Arena, Roseville, Calif., earned the Overall Team Champion trophy (the Erika Amundsen Trophy) with a total of 311 points.



Adult Championships

Photos by Gabriele Photography

Oldest "Young at Heart" Skaters:

Male: George Scrase, 81, Tampa Bay Skating Academy – Countryside, Tampa, Fla.

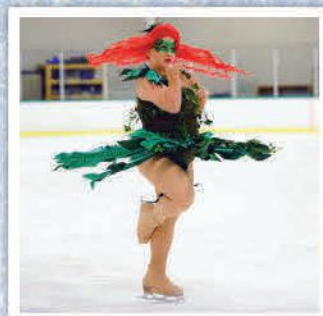
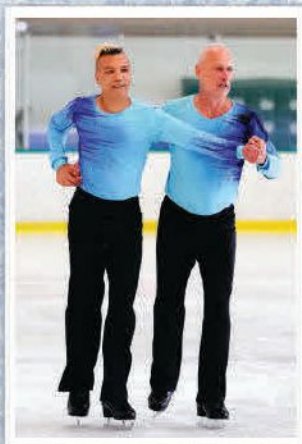
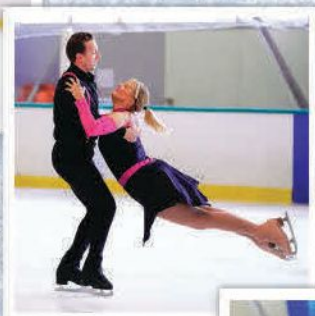
Female: Marilyn Pagni, 79, Ellenton Ice & Sports Complex, Ellenton, Fla.

Team that Traveled Farthest:

Sacred Heart University, Fairfield, Conn.

Skated the Most Events:

Nicole Naditz, Skatetown Ice Arena, Roseville, Calif. — 9 events



Top 10 Teams

PLACE	TEAM	POINTS
1.	Skatetown Ice Arena	311.0
2.	Vacaville Ice Sports	181.0
3.	Ellenton Ice and Sports Complex	154.0
4.	Yerba Buena Ice Skating Center	97.5
5.	McFetridge Sports Center	90.0
6.	Lloyd Center Ice Rink	87.0
7.	Ice Centre at the Promenade	80.0
8.	TBSA Countryside	71.0
9.	Solar4America at San Jose	67.0
10.	Kettering Adult FSC	60.0

Collegiate Champion

Sacred Heart University 166.5

For a complete list of teams and results,
visit skateisi.org/adultchamps



SkateISI — Ice Sports Industry

SkatingISI

View additional photos on Recreational Ice Skating Online at RISOnline.org



ISI Adult Champs

Oct. 11-13

ICE at the Parks

Arlington, TX

Test & Entry: Aug. 15

Visit skateisi.org/adultchamps

ISI ADULT CHAMPS FIXIE

Get ready and rarin' to compete at the 2019 ISI Adult Championships, Oct. 11-13 at ICE at the Parks in Arlington, Texas.

Whether it's your first rodeo or your umpteenth, one thing is certain: you'll head home with treasured memories that will leave you grinning from ear to ear long after your blades are back home.

There's no shortage of attractions and sights to see in Arlington and the surrounding Dallas-Forth-Worth metropolitan area. Often called the entertainment capital of Texas, Arlington is home to: Six Flags Over Texas, the Arlington Museum of Art, the Arlington Music Hall, the International Bowling Ball Museum & Hall of Fame, the Texas Rangers' Globe Life Park and the Dallas Cowboys' AT&T Stadium.

Since Arlington is centrally located between Forth Worth and Dallas, you'll want to carve out some time in your schedule for BIG adventure in both of these celebrated Texas cities.

Popular Dallas attractions include the Sixth Floor Museum at Dealey Plaza, Reunion Tower, Perot Museum of Nature and Science, Texas Discovery Gardens in historic Fair Park, Dallas World Aquarium, Dallas Arboretum and Botanical Garden, Nasher Sculpture Center, Dallas Art Museum and the Bishop Arts District.

A trip to Fort Worth, also known as "Cowtown," wouldn't be complete without a visit to the Fort Worth Stockyards, the last remaining historic stockyard in the United States. Other must-see attractions include the Fort Worth Water Gardens, Sundance Square, Billy Bob's Texas and the National Cowgirl Museum and Texas Cowboy Hall of Fame, to name a few.

Test and entry deadline for ISI Adult Championships is Aug. 15. See y'all in the Lone Star State soon!



Bishop Arts District



Sundance Square



Reunion Tower



Dallas Arboretum and Botanical Garden



Sixth Floor Museum at Dealey Plaza



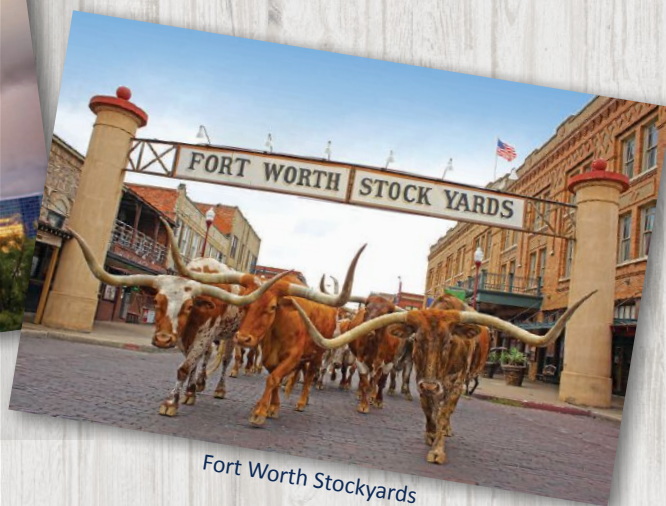
Billy Bob's Texas, world's largest honky tonk

N' TO SHAKE UP TEXAS!

by Eileen Viglione



Dallas Skyline



Fort Worth Stockyards

SEEing Is Believing

Yes, everything IS bigger in Texas! Believe it or not, Dallas is home to a GIANT eyeball! At 30-feet tall, this is one eye that will see your every move — that is, if it were real. Created by Chicago artist Tony Tasset, the sculpture is located in a garden across the street from the Joule Hotel, close to Dallas' arts district. If you visit the "The Eye" while competing in ISI Adult Champs, be sure to pose with it and send your photo to editor@skateisi.org for inclusion in the next issue of *Recreational Ice Skating* magazine. We want to SEE you — no pun intended!



Catch the Piano Man in Concert!

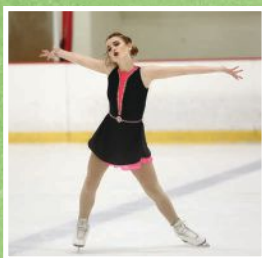
Billy Joel will be in an Arlington state of mind when he performs Oct. 12 at the Texas Rangers' Globe Life Park. His performance will mark the stadium's final show since the Texas Rangers will soon be moving to new "digs" across the street. The new \$1 billion stadium will have a retractable roof that will shield the players and fans from the blistering Texas heat in the summer. For more information, visit Billyjoel.com.

MORE INFORMATION

skateisi.org/adultchamps
arlington.org
downtownarlington.org
dallascityhall.com
visitdallas.com
fortworth.com

Photos courtesy of Visit Dallas and Visit Fort Worth

Interpretive Skating



There is perhaps no scarier thought than standing on the ice in front of judges and an audience and not having a planned program. Sounds like your worst nightmare, right? But what if that was exactly what you were supposed to do? What if you didn't actually forget your program, but instead you were given the freedom of completely making up your own — on the spot? Welcome to the world of Interpretive skating where YOU get to be the choreographer and choose the things you want to do. How exciting is that?

OK, maybe you're not convinced. After all, you spend hours and hours perfecting your Freestyle program so that you know each and every step, turn and maneuver as if it were a part of you. Why in the world would you want to go out without a plan? The truth is that you don't, and if you take a little time to learn some basic skills, you won't.

Listen, listen and listen!

Interpretive events always start with the opportunity to hear the piece of music that has been chosen for your event. At a national competition, this will happen in a locker room about 15 minutes before you warm up. At some local events, this may happen on the ice during warm up.

Regardless, when you hear the music for the first time, it is important to concentrate on really hearing it. Does it have words? And if so, what is the song about? Focus in on some key words and remember them. If you can gesture them, that's a bonus. For example, if the song is about love, you could make a heart with your hands, pretend to hug yourself or even blow a kiss. If it is instrumental, listen to determine what kind of beat it has.

Some skaters get nervous if they aren't familiar with the song, but that doesn't keep them from knowing how the song makes them feel. Is it fast and upbeat or slow and emotional? What about the instruments? A set of drumbeats, for example, might play into a footwork sequence, or a fast violin section might highlight a quick spin. Listen for big bashes or crescendos for a dramatic landing. Don't worry if you don't hear all of this the first time through. You will get at least two more opportunities to hear it before you perform.

Don't skate a Freestyle program!

Of course you will want to incorporate some of your favorite maneuvers into your program, but the judges are not scoring difficulty. It's fine to add an Axel to your program, for example, but it will not earn you anything extra just because of increased difficulty. Choose moves that highlight the music, add some variation to make them interesting and keep the program balanced.

Don't do three spins even if the music sounds "spiny" — most Interpretive programs are between 1 and 1 1/2 minutes. You should be able to fill that with a variety of spinning, gliding and jumping maneuvers if you take a minute to think about it.

Vary your pattern and direction, too. You don't have to be perfectly balanced, but skating in one big circle usually indicates that the skater is lost. It's OK to use patterns from your own programs to help with this, but just remember that the judges are looking for your creativity. Make up a footwork section on the spot and don't worry about the difficulty of it. It's still more creative than doing a dance step, for example.

Perform!

Don't be afraid to try something "crazy." If the music calls for it, stop in the middle of the ice and break out a Charleston or try your hand at a moonwalk! While you might be thinking quickly on your feet, you still need to remember that you are entertaining the judges and the audience. Use facial expressions, arm movements and anything that helps to convey your interpretation of the music. Just be sure you know the maneuver limitations for your level.

With a little mental preparation and perhaps some "practice," you can be great at Interpretive. Put on some random music during your Freestyle sessions and challenge your friends to see who can be more creative. Have fun with it and don't take it too seriously. The more relaxed you can be with it, the easier it comes. And who knows, perhaps you will find your new favorite event!

Are You a Skating Scholar?

ISI members are well-rounded individuals who put as much energy into their life off the ice as they do on it. We believe that both educational and recreational pursuits are necessary to achieve a balanced life.

Each year, the ISIA Education Foundation awards scholarships to ISI skaters who have demonstrated a commitment to academics and service. The application process is open to students in their senior year of high school through their junior year in an undergraduate program. However, most recipients began their qualification process during their middle-school years. Start your four-step process today!

1. Maintain a 3.0 GPA
2. Participate in a variety of school and community activities. Keep detailed records, including frequency of participation.
3. Continue to test and compete in the ISI program, especially during the two years prior to application. Keep good records of all skating activity.
4. Prior to applying, complete 120 hours of verified service, of which at least 60 must be in association with an ISI member facility. You have the opportunity to do your volunteer work at ISI national events, too. All of this information must be recorded on the Service Hours Verification Form, which is part of the scholarship application available at isiafoundation.org.



Get Social with Us!

 facebook.com/isiaeducationfoundation

 [@isiaeducationfoundation](https://www.instagram.com/isiaeducationfoundation)

New Website:
isiafoundation.org

Application deadline for the 2020-21 school year is Feb. 1, 2020. Questions? Please email scholarships@isiafoundation.org

Have a Blast at ISI Conference Championships!

May 31 – June 2
Centennial Ice Rinks
Wilmette, IL
Test & Entry Deadline: April 1
skateisi.org



Flip 'n' Fun...

"FLIP OUT" YOUR SKATING BAG
OR JACKET WITH A FLIP PIN!



EDITOR'S NOTE: This fun project entails sewing skills, so an adult may need to assist, depending on the age level of the participant. This is a great opportunity to introduce your "crafter" to some basic hand-sewing skills, such as the blanket stitch, French knot and satin stitch. The entire project, however, can be completed using the blanket stitch (See photo). There are many great tutorials online — YouTube is a great resource — that demonstrate these easy hand-sewing techniques.

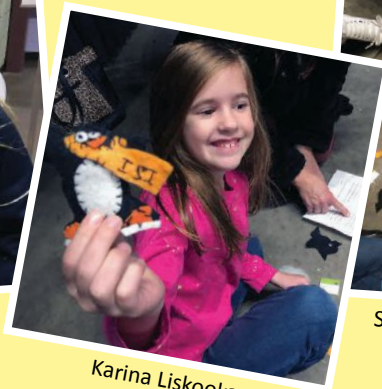


HERE'S WHAT YOU WILL NEED:

- Flip pattern (at right, page 25)
- Felt squares, one of each color: black, white, orange, yellow/gold
- Black embroidery floss
- White embroidery floss
- 2 "googly eyes" or buttons (or white and black felt)
- Needle with large "eye"
- Handful of pillow stuffing (or leftover pieces of felt)
- Safety pin or key ring with clip-on latch
- Tacky Glue (if using googly eyes)



Lilia Campbell & Emma Mahon



Karina Liskooka

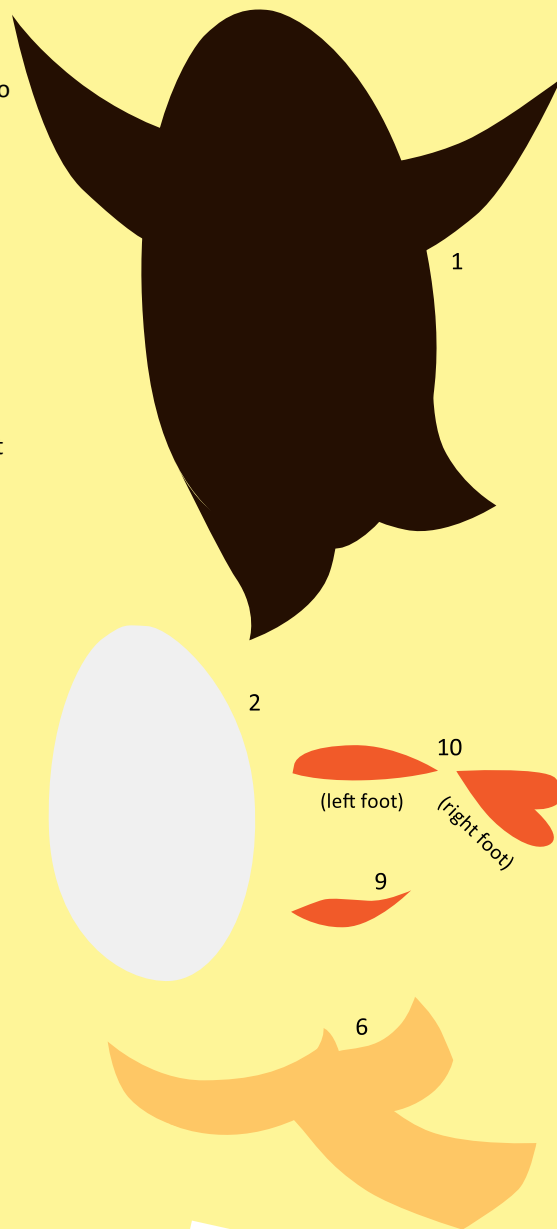


Skating Club of Greater Youngstown skaters

Adventures & Activities

INSTRUCTIONS:

1. Cut out the **Flip Body Pattern** on this page and trace it on black felt. Do this twice to make the front side of Flip and the back side of Flip. Cut out both pieces and put them aside.
2. Cut out the **Oval Tummy Pattern** on this page and trace it onto the white felt. Cut out and put aside.
3. Thread needle with three stands of black embroidery floss. Hold the end of the floss down on the fabric, make a stitch over it and continue stitching; no need to knot the end.
4. Sew the white oval tummy to one of the black body pieces, creating Flip's front side.
5. Use "googly eyes" or white felt to give Flip his eyes. If using "googly eyes," glue them on with Tacky Glue. If using felt, cut two small circles out and sew to the front side of the black felt piece to create Flip's face, and use a black marker or felt to create pupils.
6. Cut out the **Scarf Pattern** on this page and trace it on yellow/gold felt. Cut out and make several slits at end to create fringe.
7. Stitch the letters "ISI" on scarf with black embroidery floss.
8. Sew part of the scarf to Flip's neck.
9. Cut out the **Beak Pattern** on this page, trace on felt and cut out. Sew onto Flip's face.
10. Cut out the **Feet Pattern** on this page, trace onto orange felt, cut and sew to bottom of Flip's legs.
11. Cut two small rectangles from white felt for the skate blades and sew to end of Flip's feet.
12. Sew pin to the middle of Flip's back.
13. Sew the second black felt body piece (Flip's back) to the back of the front piece (featuring Flip's face), stitching around the outer edges. Leave a small hole at the bottom to insert stuffing.
14. Using the blunt (not sharp) end of a pen or pencil, carefully push the stuffing into the head, wings and feet.
15. Finish sewing the body, closing the hole.
16. Sew on a black loop at the top of his head and cut in half to look like Flip's "hair."
17. Pin the finished Flip to your skate bag, jacket or hat. Be sure to have someone take a picture of you with your Flip pin and send to editor@skateisi.org and we'll feature it in the magazine.



Thank you to Rebecca Langford of the Skating Club of Greater Youngstown of Canfield, Ohio, for creating the Flip Felt Pin pattern and sending materials to members of the club to create the pins. The skaters enjoyed working on the project together and now they have some homemade ISI Flip swag! Thank you, skaters!



WANTED: YOUR IDEAS! Got ideas for crafts and recipes for *Recreational Ice Skating* magazine? Please send to editor@skateisi.org. If we use your idea, we will send you a gift and feature you in the publication! (We will only feature submissions from current ISI members.)

2018 ISI THEATRICAL C

Ice Chalet – Knoxville: Theatrical Challenge Champion!

Ice Chalet – Knoxville was crowned the Overall Team Champion of the 2018 Theatrical Challenge on Oct. 6. The historic Ice Chalet served as host of this inaugural event, which was well received.

Skaters had the unique opportunity to perform under full theatrical lighting — five to seven spotlights — and spectators enjoyed on-ice seating, which created an intimate atmosphere.



“Decked out in full theater seating and lighting, the rink was perfectly prepared for the event,” said ISI Skating Programs & National Events Director Kim Hansen. “Each skater was announced and took the ice through a beautiful full-size curtain. They got to experience real show lighting that included multiple spotlights and gave them the true star experience. Before the day was over, even an ensemble of moms had gotten their chance at being the stars of their show. And the kids loved it!”

Participating teams hailed from seven states: Alabama, Connecticut, Maryland, Minnesota, Missouri, Ohio and Tennessee.



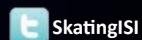
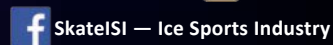
CHALLENGE

Photos by Ice Chalet Skating Director Julia Hardin



Top 8 Teams

PLACE	TEAM	POINTS
1.	Ice Chalet – Knoxville	321.0
2.	HealthEast Sports Center	135.0
3.	Point Mallard FSC	111.5
4.	City of St. Peters Rec-Plex	82.5
5.	Lou & Gib Reese Ice Arena	55.0
6.	Wonderland of Ice	50.0
7.	Line Creek FSC	22.0
8.	Goggin Ice Center	17.0



View additional photos on Recreational Ice Skating Online at RISONline.org

Competitions

March

22-24..... Sioux Falls SD

Sioux Falls FSC – SCHEELS Ice Plex
2019 Sioux Falls Ice Classic

22-24.....Owensboro KY

City of Owensboro Edge Ice Center
8th Annual Living on the Edge

22-24..... Oldsmar FL

Tampa Bay Skating Academy - Oldsmar
Annual Spring Fling ISI Skating
Competition

24..... Arlington TX

ICE at The Parks
ISI Spring In-House Competition

30..... Virginia Beach VA

Iceland of Hampton Roads
26th Annual Azalea Open

April

6.....Pittsburgh PA

Ice & Blades Figure Skating Team
Golden Blades Championship of
Pittsburgh



April 12-14
Doug Woog Arena
So. St. Paul, MN



April 13

13.....Lakewood CA

The Rinks – Lakewood ICE
23rd Annual ISI In-House Competition

13-14.....Franklin Park IL

Franklin Park Ice Arena
Spring Fever Competition

13.....Plymouth MA

FMC Armstrong Arena
The Spring Sparkle

26-28.....Pasadena CA

Pasadena Ice Skating Center
35th Annual Pasadena ISI Open
Competition

27.....Boxborough MA

Nashoba Valley Olympia
38th Annual ISI Team Competition

May

3-5.....Knoxville TN

Ice Chalet
The 50th Annual Robert Unger ISI
Competition

3-5.....North Richland Hills TX

NYTEX Sports Centre
ISI District 11 Championships

4-5.....Yorba Linda CA

The Rinks – Yorba Linda ICE
The Rinks – Yorba Linda ICE 16th
Annual ISI Open Competition

4-5.....Fairfax VA

Fairfax Ice Arena
Fairfax Ice Arena's 2019 Annual ISI
Competition

5.....Norwich CT

RoseGarden Ice Arena
2019 Tournament of Roses

17-19.....Concord MA

Valley Sports Arena
17th Annual Sharper Edge "Skater's Cup"



May 31- June 2
Centennial Ice Rinks
Wilmette, IL

June

9.....Centennial CO

South Suburban Ice Arena
Yvonne Dowlen Memorial ISI
Competition

14-16.....South Lake Tahoe CA

Tahoe Sports and Entertainment
Skate at the Lake

July



July 22-27
St. Peters Rec-Plex
St. Peters, MO

31-Aug 4.....Lynchburg VA

LaHaye Ice Center – Liberty University
State Games of America

September

14-15..... Arlington TX

Ice at The Parks
ICE at The Parks 16th Annual ISI Open
Competition

Shows & Exhibitions

March

23-24..... Red Wing MN

Red Wing School District #256 – Prairie
Island Arena
Starstruck!

23..... Peoria IL

Owens Recreation Center
Amore

30-31..... Stevens Point WI

KB Willett Ice Arena
Heroes

April

12-13.....Joliet IL

Joliet Park District
So You Think You Can Skate

13-14.....College Park MD

Herbert Wells Ice Rink
Toy Story

May

3-5..... Chicago IL

McFetridge Sports Center
90s Rewind

3-5.....Park Ridge IL

Oakton Ice Arena
"___ And the Winner is ___"

3-5..... Niles IL

Niles Park District IceLand
Animal Antics of the Air, Land, Sea, & ICE

5..... Escondido CA

Ice-Plex Escondido
2019 Ice-Plex Escondido Spring Hop

calendar

10-11.....Birmingham MI

City of Birmingham Ice Sports Arena
Elements on Ice 2019

17-19.....Franklin Park IL

Franklin Park Ice Arena
Spring Ice Show

17-19.....Wilmette IL

Centennial Ice Rinks
La Dolce Vita

June

15-16.....Boxborough MA

Nashoba Valley Olympia
Magical Movie Memories Ice Magic 2019

December

7-8.....Franklin Park IL

Franklin Park Ice Arena
Holiday Recital 2019

High-Level Tests

Congratulations to the following ISI
skaters who have recently
passed high-level tests:

FREESTYLE 7

Daniel Palmeri

Shelby Township Parks, Recreation
Shelby Township, Mich.

FREESTYLE 8

J-Arh Doromal

Owens Recreation Center
Peoria, Ill.

Sadie Gibbs

SportQuest Skating Academy-Parade
Minneapolis, Minn.

Izzi Gorowsky

White Bear Lake Sports Center
White Bear Lake, Minn.

Daniel Palmeri

Shelby Township Parks, Recreation
Shelby Township, Mich.

Nicole Stawski

The Edge Ice Arena
Bensenville, Ill.

Maren Tetting

SportQuest Skating Academy-Parade
Minneapolis, Minn.

Jacklyn Riebenstein

Joliet Park District
Joliet, Ill.

FREESTYLE 9

Sydney Berrier

White Bear Lake Sports Center
White Bear Lake, Minn.

Kaylee Bertolucci

Skatetown Ice Arena
Roseville, Calif.

Daniel Palmeri

Shelby Township Parks, Recreation
Shelby Township, Mich.

Ava Pihlstrom

SportQuest Skating Academy-Parade
Minneapolis, Minn.



Designer & Manufacturer of Fine Skating Accessories

P.O. Box 893 | SEAL BEACH, CA 90740 | 562.431.0223

ORDER ONLINE AT WWW.ICELIGHT.BIZ

BOOT GLOVES

SAY GOODBYE TO COLD FEET!

- ☞ KEEP FEET WARM
- ☞ ATTRACTIVE, STYLISH DESIGN
- ☞ EXTEND SKATE BOOT LIFE
- ☞ PROTECT BOOTS FROM MOISTURE & WEAR
- ☞ ADD SUPPORT TO BROKEN DOWN SKATES
- ☞ KEEP LACES FROM SLIPPING & SECURE THE BOOT FIT



PARENTS' PAGE



ISI Competitions 101

Recreational Skating

Since ISI's recreational concept for ice skating competitions was developed to encourage "participation, not elimination," several parts of our judging system also have been adapted toward that goal.

One reason so many different types of events are offered at an ISI competition is that each competition event has been developed to improve one specific part of the skater's total development.

For example, besides technical events like Pre-Alpha through Delta and Freestyle, there are other individual events like Spotlight, Artistic and Interpretive that develop the skater's performance skills. Footwork and Stroking are specialized events that can improve all other program routines.

Among the partner events are Couples, Pairs, Dance, Jump & Spin and Couples Spotlight.

Team events include Family Spotlight, Production, Synchronized, Kaleidoskate and Pattern.

The more different types of competition events that skaters can participate in, the more medals they will win and the more they will develop and improve ALL of their future skating skills. With the additional experience from doing many different events, they will become better and more well-rounded skaters.

Comparative Judging

When there are two or more entries in an event, only comparison judging is used. That means the judges will compare the performance of the two skaters for each specific judging criteria and then give the better performance a higher numerical score.

For most events, the judges are judging "apples with apples," so they are judging the *quality* of each maneuver performed and not only the overall performance or program routine.

Sometimes it's still possible for there to be a tie because each judge is judging different criteria for most ISI events.

Skating Against the Book

When there is only one entry in a category or event, they are said to be "skating against the book." The skater or team will not automatically receive first place just for showing up. They must receive an average of 80 percent of the total scores possible from all three judges to get first place.

If there are required maneuvers in the program, such in as Pre-Alpha through Delta or Freestyle programs, the judges must

score each maneuver. If one maneuver is lower than 80 percent but the next one is higher than 80 percent, the *average* is still above the 80 percent requirement for first place.

If there are no required maneuvers in the program, the judges will look at the overall performance and evaluate each judging criteria. Again, the total average for all three judges must be above 80 percent for first place.

Medals and Trophies

For all ISI national events, every skater in every event receives a medal for each performance.

If the skater's name is not listed in the first through fifth place result boxes, it will be listed at the bottom right-hand side as sixth place. *All* skaters on that list will receive a sixth-place medal. The sixth place name order is a random list, not in actual placement order.

All large event teams (Synchronized, Production, Kaleidoskate and Pattern) will have on-ice awards. Each skater receives an individual medal and the team receives a trophy for the top five placements.

.....

PARENTS WANT TO KNOW...

Q. I see that the ISI World Recreational Team Championships is advertised as a "team" competition. Does that mean that my child won't be receiving an individual award?

A. Not at all. Every skater receives an individual medal for his or her accomplishments at the ISI World Recreational Team Championships. But this event, like all ISI inter-rink competitions (in which more than one facility participates) is also a team event, meaning that all participants are earning points for the ISI rink or club they are representing. Every time they skate, they earn participation points for their team. In addition, each individual first place earns 5 placement points; second place receives 4 points; third place, 3 points; fourth place, 2 points; and fifth place, 1 point toward the team total. For team events (Production, Kaleidoskate, Pattern, Team Compulsory and Synchronized teams), they earn 25 points for first place; 20 points for second place; 15 points for third place; 10 points for fourth place; and 5 points for fifth place. At the end of the event, all team points are totaled and the top five teams are awarded team trophies. All skaters can be proud of the fact that they successfully added to their team's final result.

PARENTS: Tell us what you want to know! Send your questions to: editor@skateisi.org

2019 ISI National Events

Come one, Come all! Step right up and join the fun at the following ISI national competitions in 2019.



ISI Winter Classic

Feb. 22-24
Toyota Sports Center
El Segundo, CA
Test & Entry Deadline: Dec. 1

ISI Synchronized Championships

April 12-14
Doug Woog Arena
So. St. Paul, MN
Entry Deadline: Feb. 1



ISI Conference Championships

May 31-June 2
Centennial Ice Rinks
Wilmette, IL
Test & Entry Deadline: April 1



ISI MinneShowdown

April 13
Entry Deadline: Feb. 1



ISI Adult Championships

Oct. 11-13
ICE at the Parks
Arlington, TX
Test & Entry Deadline: Aug. 15



ISI World Recreational Team Championships

July 22-27
St. Peters Rec-Plex
St. Peters, MO
Test & Entry Deadline: May 1



ISI Holiday Challenge

Oct. 25-27
RoseGarden Ice Arena
Norwich, CT
Test & Entry Deadline: Sept. 1



For details, visit skateisi.org



GOLDEN HORSE

SINCE 1969 Taiwan



Want a pair of custom-made lightweight boots which are inexpensive, comfortable to wear and fit your feet perfectly well? Just contact us right away!!!



Do you have damaged feet like the ones in the pictures?
Stop torturing your feet with some famous and expensive boots which don't fit your feet at all !



Maestro
Triple/Quad jumps

Do you want a pair of boots which are only for you?

Golden Horse can customize your name

See these examples which are only small part from our many users of "Maestro"

We are based in Taiwan yet have a broad global customer base.
We do custom orders to your specifications for personal use and bulk shipments

Call us: Helen:886-927351409 eMail us: helenou8@gmail.com

USA phone number:213-3752852

www.ghskates.com

IG:goldenhorseskates